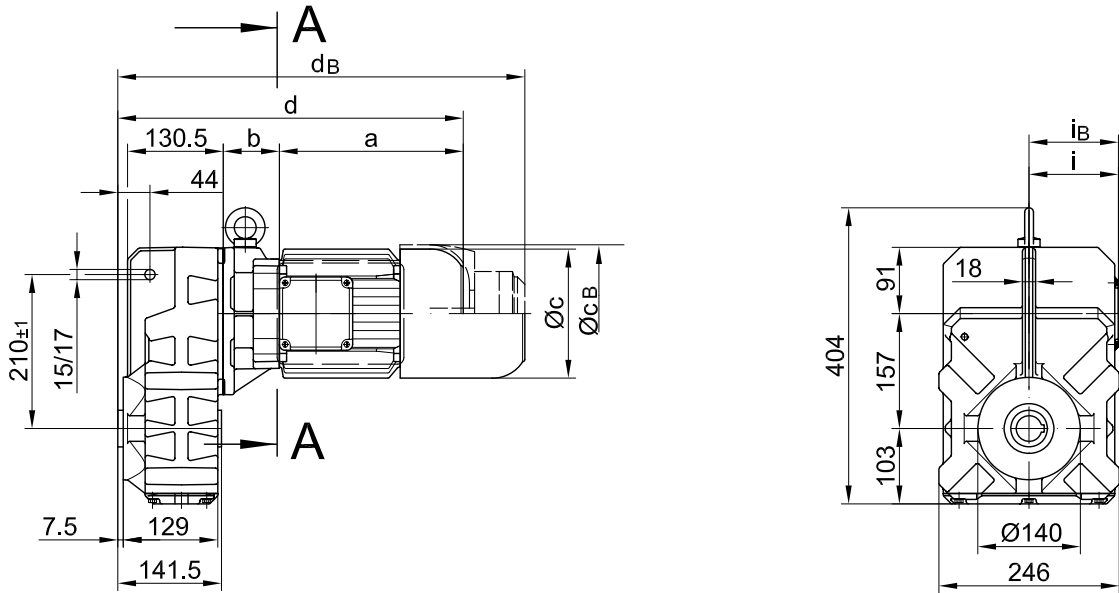


mit Drehmomentstütze/ with torque arm/ avec bras de réaction

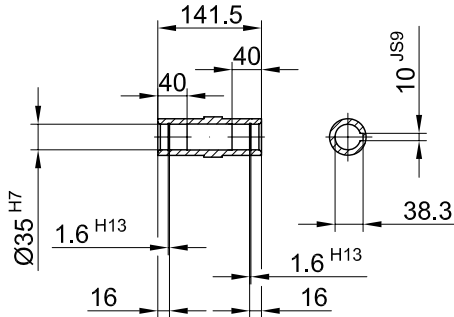
BF30-BF30Z

Stand: 30.11.2006 / mk

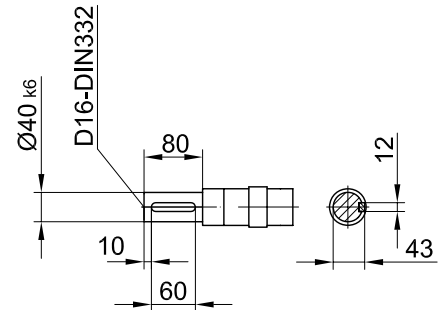
Code -0./



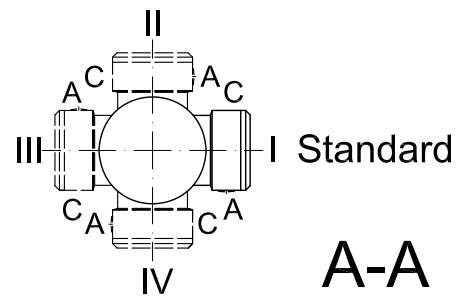
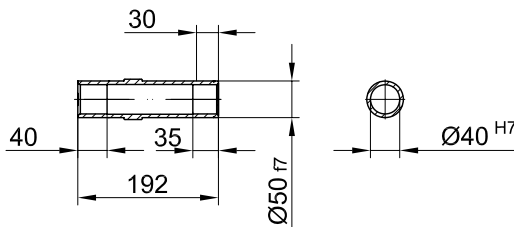
Code -4/



Code -1/



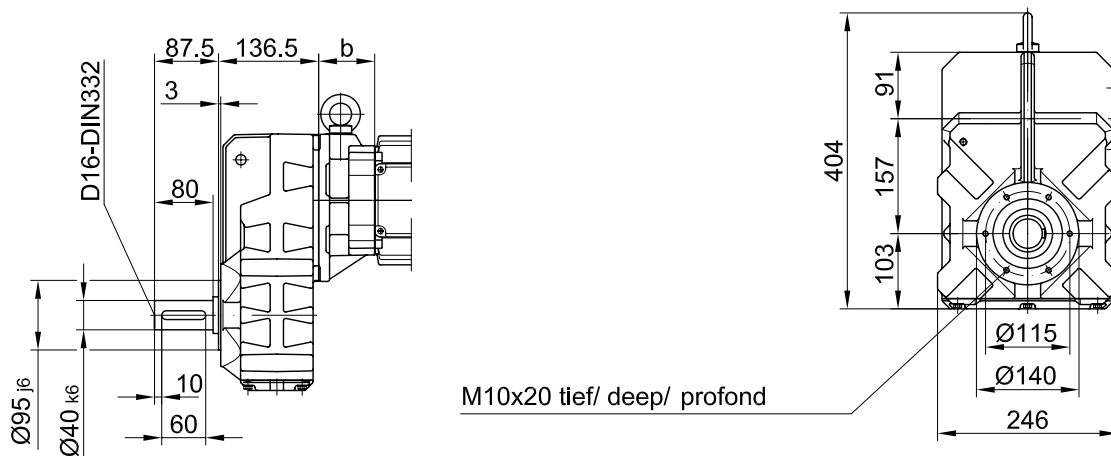
Code -5/



Typ/ Type/ Type	a	b	c	d	i	Ausführung mit Bremse/ with brake / avec frein												
						i _B	E003		E004		E008		Z008		Z015		E075	
							c _B	d _B	c _B	d _B	c _B	d _B	c _B	d _B	c _B	d _B	c _B	d _B
BF30-../D05..	170	58	123	373	100	100	123	415										
BF30Z-../D05..	170	133.5	123	448	100	100	123	490										
BF30-../D06..	170	58	123	373	100	100	123	415										
BF30Z-../D06..	170	133.5	123	448	100	100	123	490										
BF30-../D07..	190	58	123	393	100	100	123	435	123	435								
BF30Z-../D07..	190	133.5	123	468	100	100	123	510	123	510								
BF30-../D08..	200	62	156	406	115	115					166	481						
BF30Z-../D08..	200	137.5	156	481	115	115					166	556						
BF30-../D09..	251	76.5	181	471	124	124					192	551	192	565	192	571		
BF30Z-../D09..	251	152	181	547	124	124					192	626	192	640	192	646		
BF30-../D11..	319	83	228	546	181	181									231	648.5	231	678.5

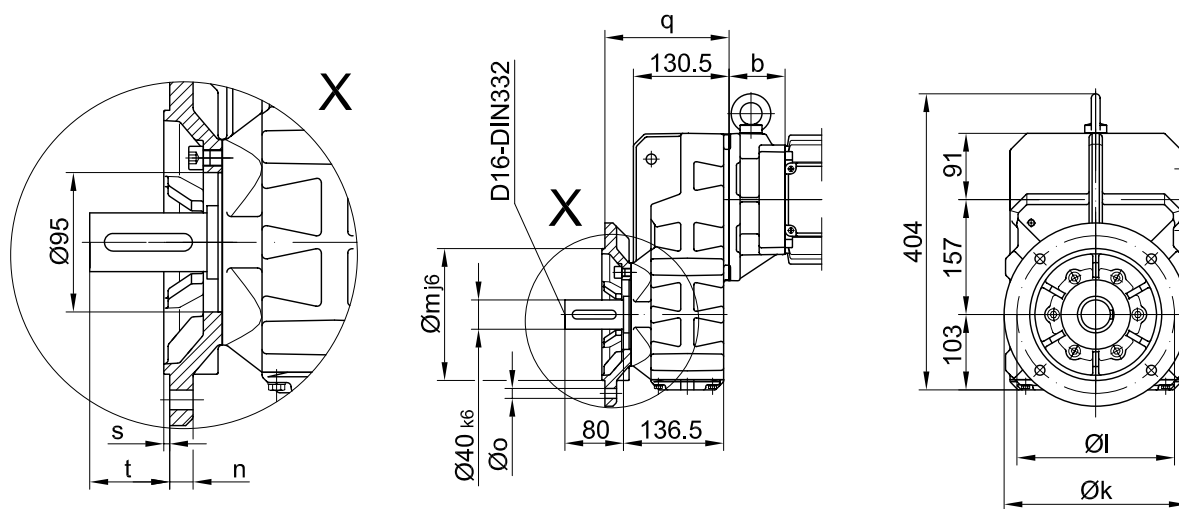
Flansch mit Gewindelöchern/ flange with tapped holes/ bride avec trous taraudés

Code -7./



Flansch mit Durchgangslöchern/ flange with clearance holes/ bride avec trous débouchants

Code -3./
(Code -2./)



Flanschmasse/ Flange dimensions/ cotes de la bride

BF30(Z)	k	l	m	n	o	q	s	t
Standard/ -3./	250	215	80	16	13.5	169.5	4	54.5
klein/ small/ petit-2./	200	165	130	12	11	160.5	3.5	63.5

Fuss mit Gewindelöchern links und rechts/ Foot with tapped holes left and right/
 fixation à pied avec trous taraudés à gauche et à droite

Code -6.LR/

