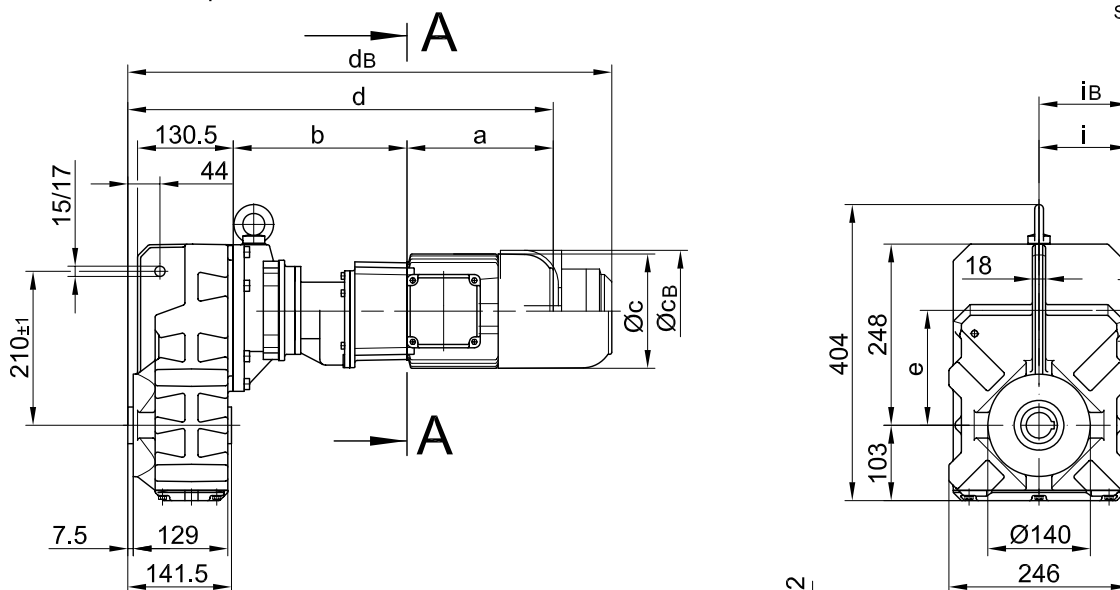


mit Drehmomentstütze/ with torque arm/ avec bras de réaction

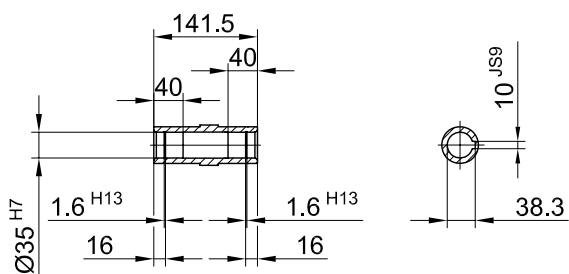
BF30G06

Stand: 30.11.2006 / mk

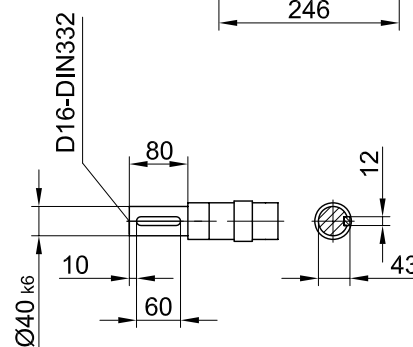
**Code -0./**



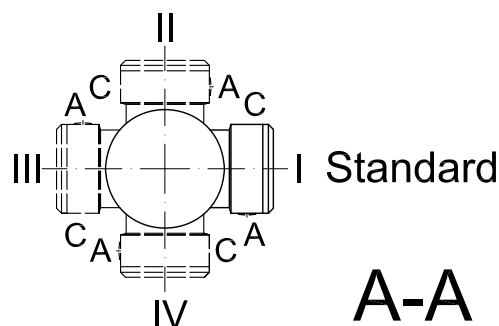
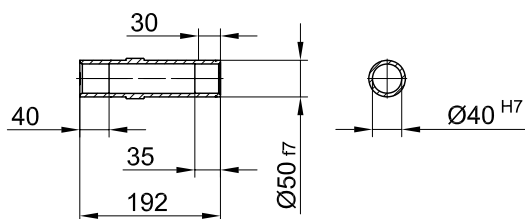
**Code -4/**



**Code -1/**



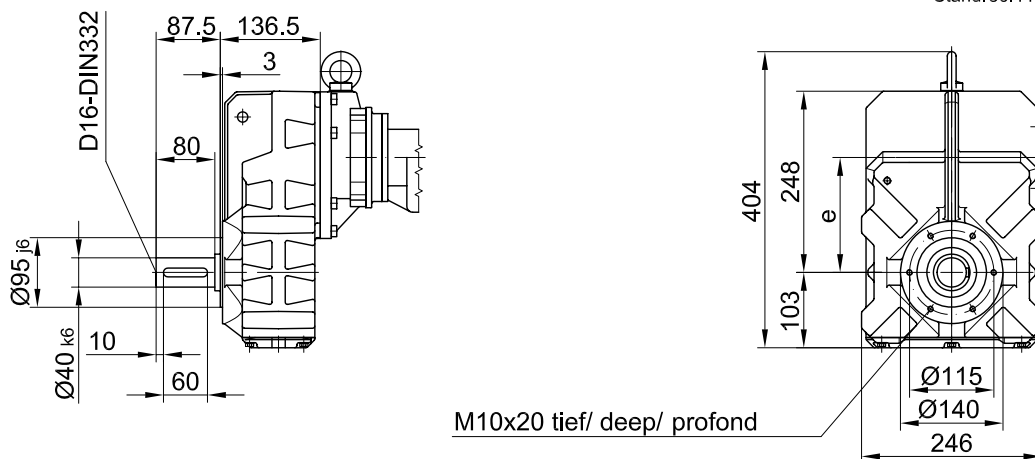
**Code -5/**



Typ/ Type/ Type	a	b	c	d	e	i	Ausführung mit Bremse/ with brake/ avec frein									
							i <sub>B</sub>	E003		E004		E008				
								c <sub>B</sub>	d <sub>B</sub>	c <sub>B</sub>	d <sub>B</sub>	c <sub>B</sub>	d <sub>B</sub>			
BF30G06-../D04..	143	191	111	478	156	90	90	111	521							
BF30G06-../D05..	170	193	123	508	156	100	100	123	550							
BF30G06-../D06..	170	193	123	508	156	100	100	123	550							
BF30G06-../D07..	190	193	123	528	156	100	100	123	570	123	570					
BF30G06-../D08..	200	237	156	581	156	115	115					166	656			

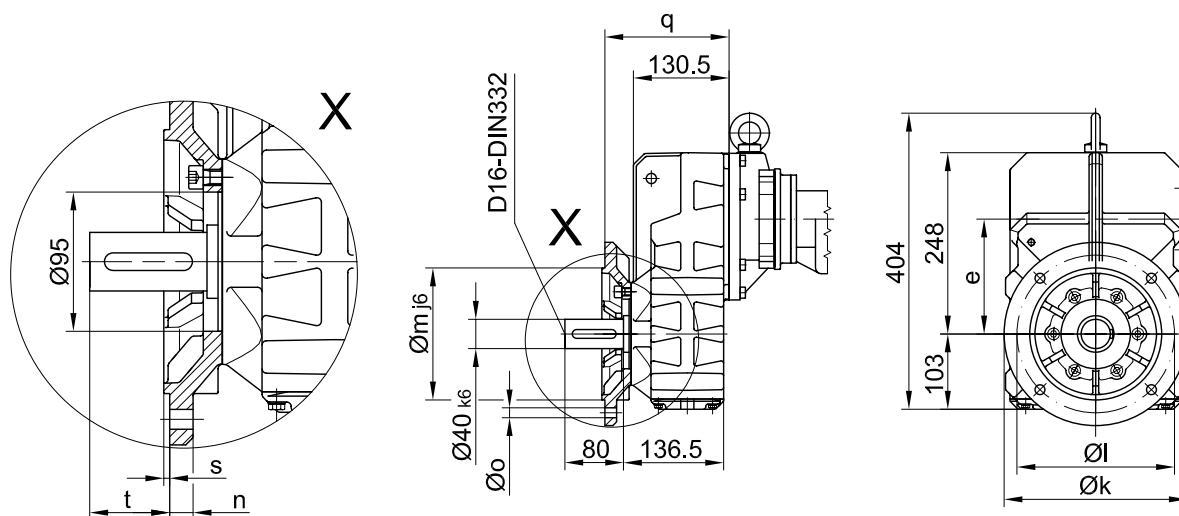
Flansch mit Gewindelöchern/ flange with tapped holes/ bride avec trous taraudés

Code -7./



Flansch mit Durchgangslöchern/ flange with clearance holes/ bride avec trous débouchants

Code -3./  
 (Code -2./)



Flanschmasse/ Flange dimensions/ cotes de la bride

BF30G..	k	l	m	n	o	q	s	t
Standard/ -3./	250	215	180	16	13.5	169.5	4	54.5
klein/ small/ petit-2./	200	165	130	12	11	160.5	3.5	63.5

Fuss mit Gewindelöchern links und rechts/ foot with tapped holes left and right/  
 fixation à pied avec trous taraudés à gauche et à droite

Code -6.LR/

