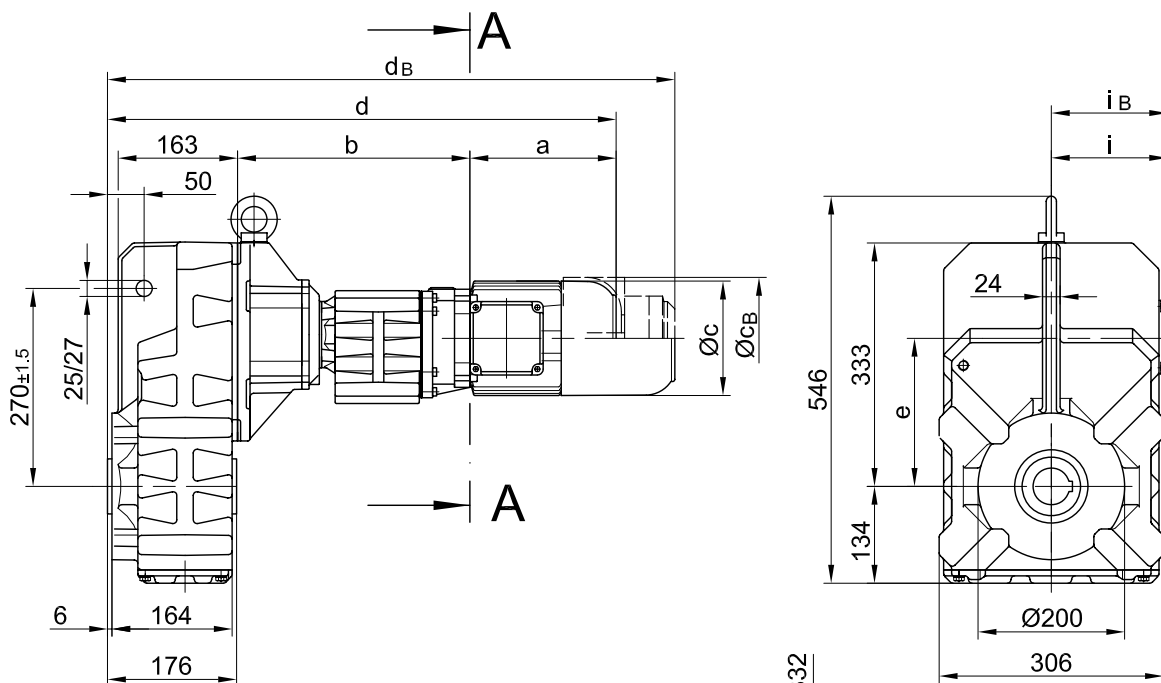


mit Drehmomentstütze/ with torque arm/ avec bras de réaction

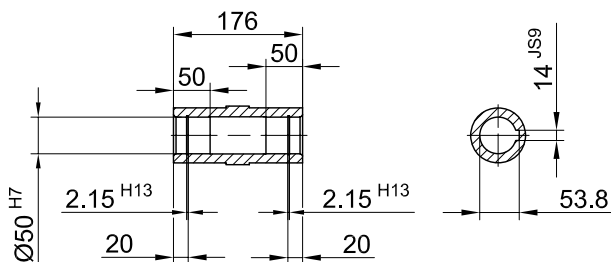
BF50G10

Stand: 30.11.2006 / mk

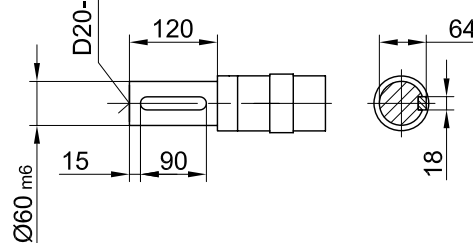
Code -0./



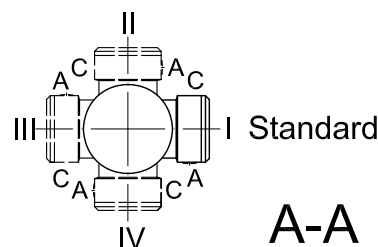
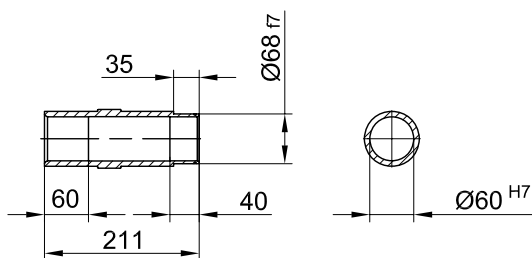
Code -.4/



Code -.1/



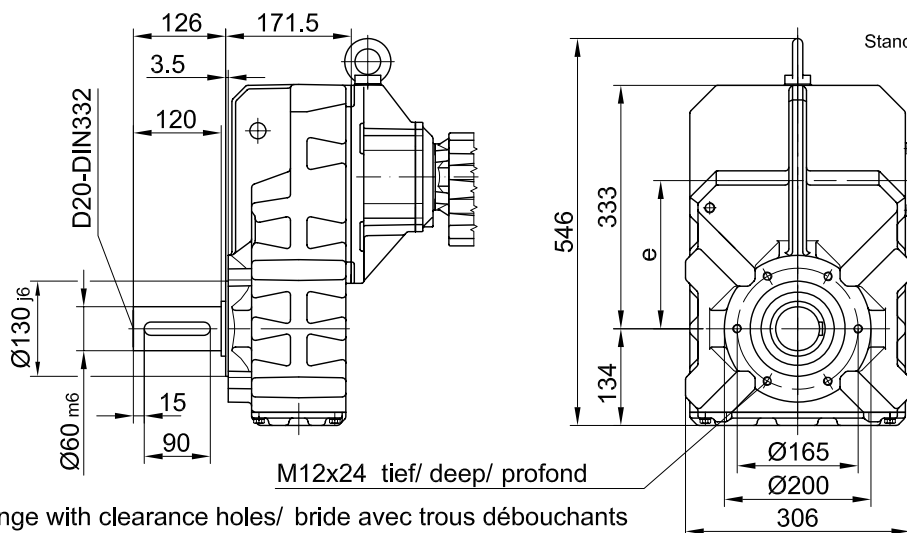
Code -.5/



Typ/ Type/ Type	a	b	c	d	e	i	Ausführung mit Bremse/ with brake/ avec frein										
							i _B	E003		E004		E008		Z008		Z015	
								c _B	d _B	c _B	d _B	c _B	d _B	c _B	d _B	c _B	d _B
BF50G10-../D05..	170	313	123	661	202	100	100	123	703								
BF50G10-../D06..	170	313	123	661	202	100	100	123	703								
BF50G10-../D07..	190	313	123	681	202	100	100	123	723	123	723						
BF50G10-../D08..	200	317	156	694	202	115	115					166	769				
BF50G10-../D09..	251	332	181	760	202	124	124					192	840	192	854	192	860

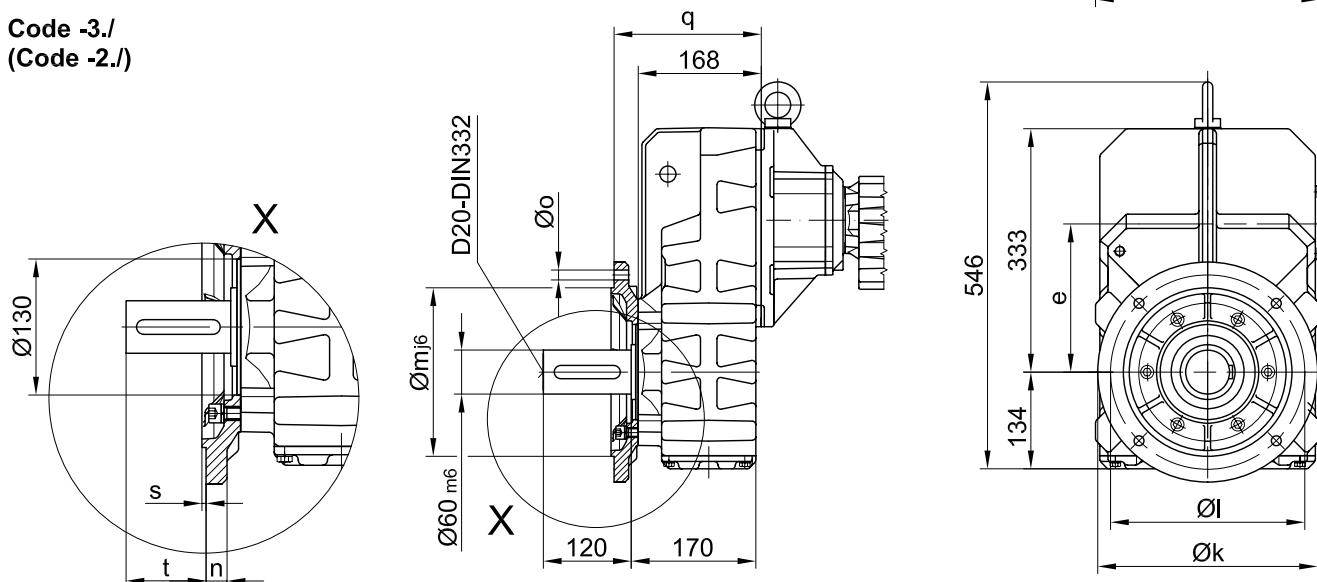
Flansch mit Gewindelöchern/
 flange with tapped holes/
 bride avec trous taraudés

Code -7./



Flansch mit Durchgangslöchern/ flange with clearance holes/ bride avec trous débouchants

Code -3./
(Code -2./)



Flanschmasse/ Flange dimensions/ cotes de la bride

BF50G..	k	l	m	n	o	q	s	t
Standard/ -3./	300	265	230	20	13.5	201	4	96.5
klein/ small/ petit -2./	250	215	180	16	13.5	198	4	99.5

Fuss mit Gewindelöchern links und rechts/ foot with tapped holes left and right/
 fixation à pied avec trous taraudés à gauche et à droite

Code -6.LR/

