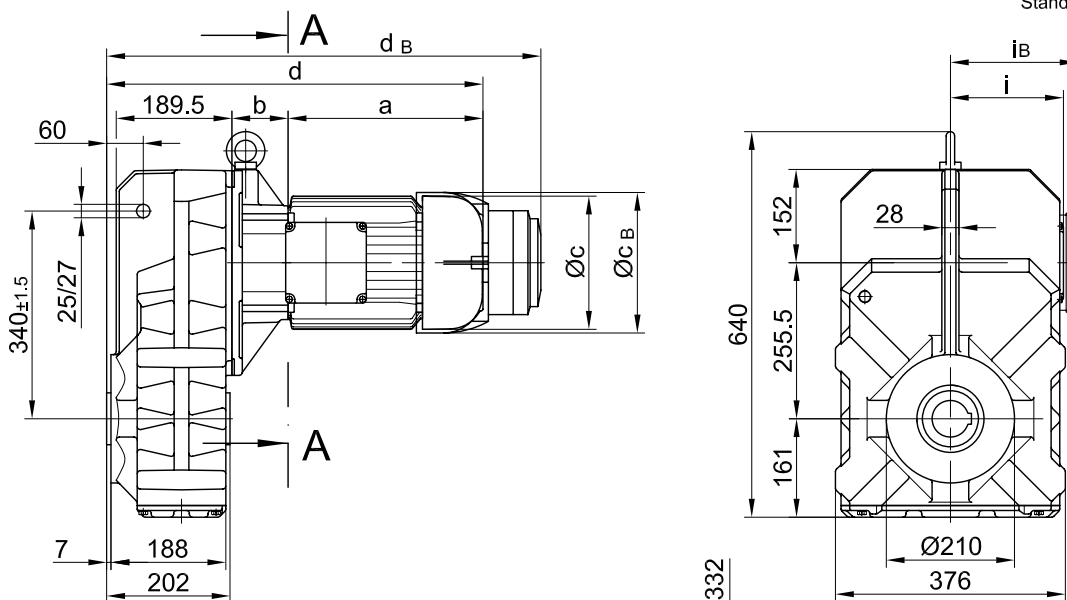


mit Drehmomentstütze/ with torque arm/ avec bras de réaction

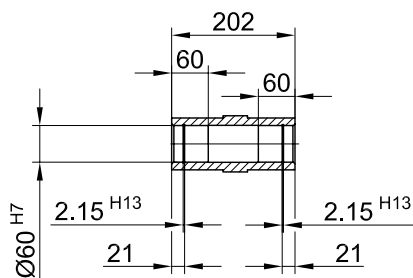
BF60-BF60Z

Stand: 30.11.2006 / mk

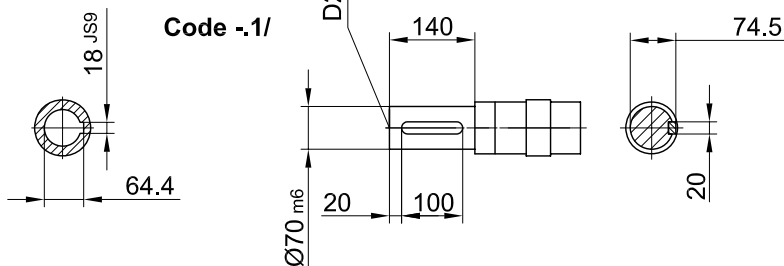
**Code -0./**



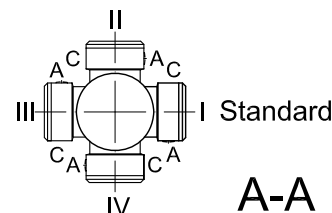
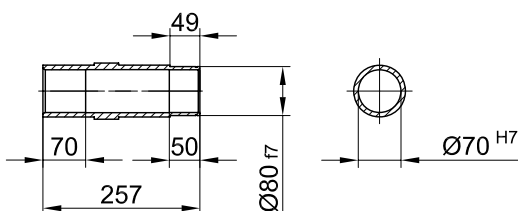
**Code -4/**



**Code -1/**



**Code -5/**



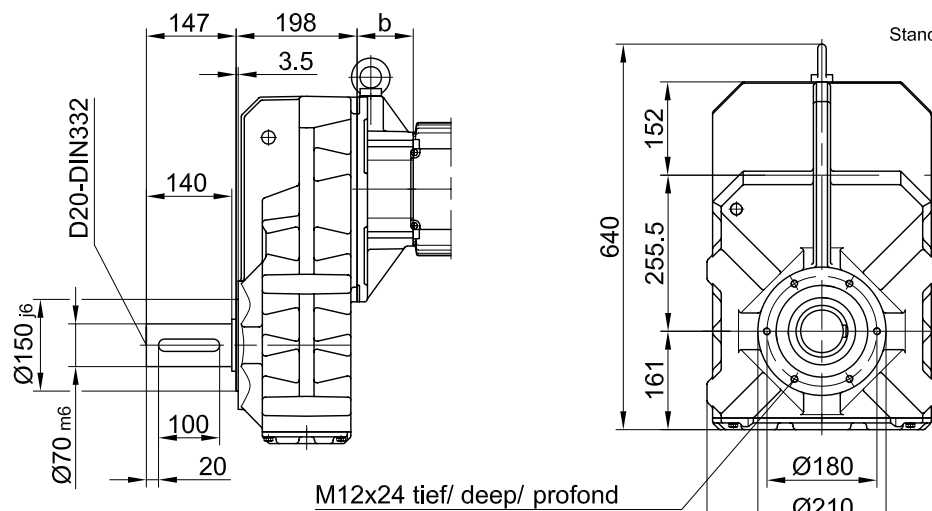
Flanschmasse/ Flange dimensions/ cotes de la bride

BF60(Z)	k	l	m	n	o	q	s	t
Standard/ -3./	350	300	250 <sub>h6</sub>	20	17.5	234.5	5	110.5
klein/ small/ petit -2./	300	265	230 <sub>j6</sub>	20	13.5	242.5	4	102.5

Typ/ Type/ Type	a	b	c	d	i	Ausführung mit Bremse/ with brake/ avec frein												
						i <sub>B</sub>	E008		Z008		Z015		E075		Z075		Z100	
							c <sub>B</sub>	d <sub>B</sub>	c <sub>B</sub>	d <sub>B</sub>	c <sub>B</sub>	d <sub>B</sub>	c <sub>B</sub>	d <sub>B</sub>	c <sub>B</sub>	d <sub>B</sub>	c <sub>B</sub>	d <sub>B</sub>
BF60Z-../D08..	200	181	156	586	115	115	166	661										
BF60-../D09..	251	85.5	181	540	124	124	192	621	192	635	192	641						
BF60Z-../D09..	251	195.5	181	651	124	124	192	731	192	745	192	751						
BF60-../D11..	319	92	228	616	181	181					231	719	231	749				
BF60Z-../D11..	319	202	228	726	181	181					231	829	231	859				
BF60-../D13..	393	105	266	703	217	277							277	838	277	857		
BF60-../D16..	429	119	322	753	243	243							326	886	326	905	326	925

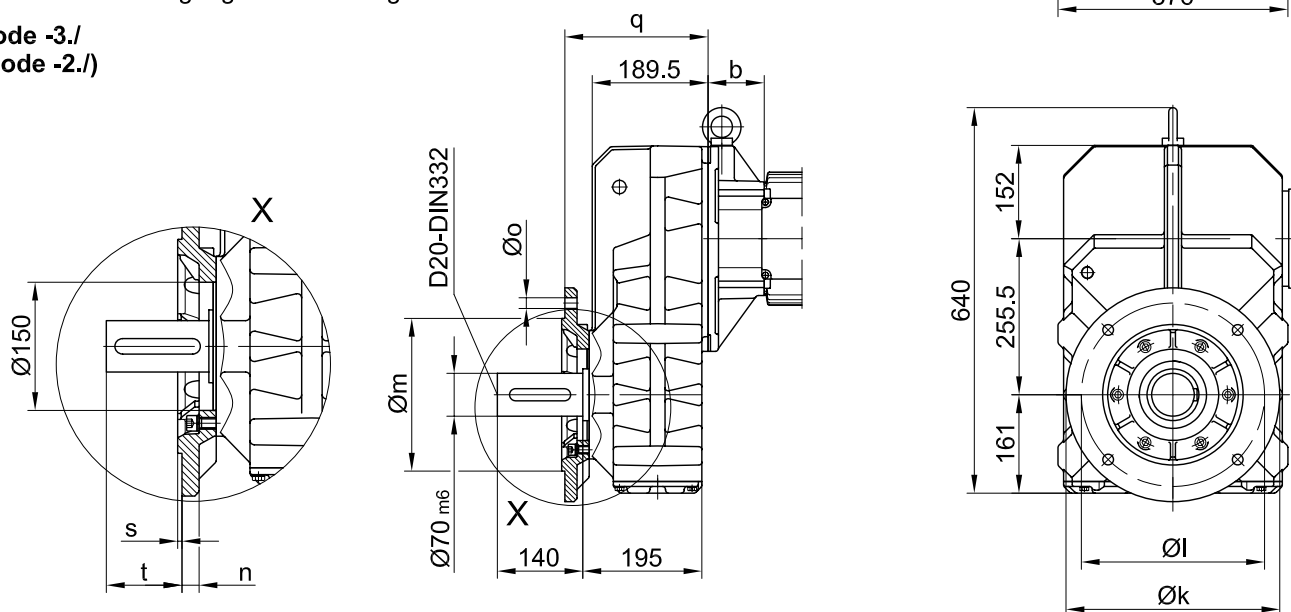
Flansch mit Gewindelöchern/  
 flange with tapped holes/  
 bride avec trous taraudés

**Code -7./**



Flansch mit Durchgangslöchern/ flange with clearance holes/ bride avec trous débouchants

**Code -3./  
 (Code -2./)**



Fuss mit Gewindelöchern links und rechts/ foot with tapped holes left and right/  
 fixation à pied avec trous taraudés à gauche et à droite

**Code -6.LR/**

