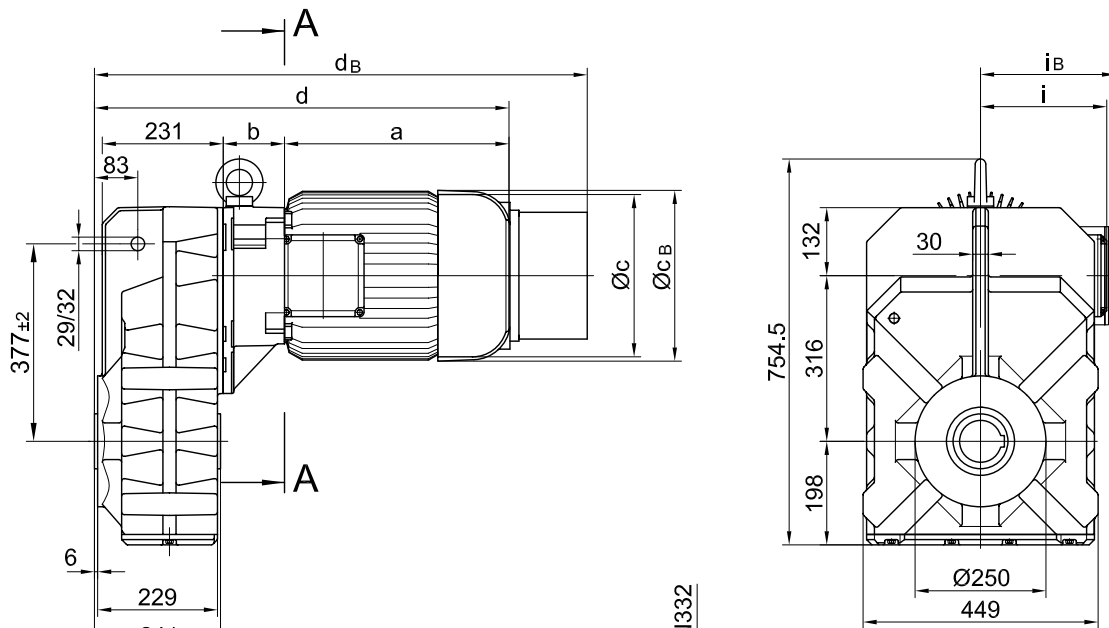
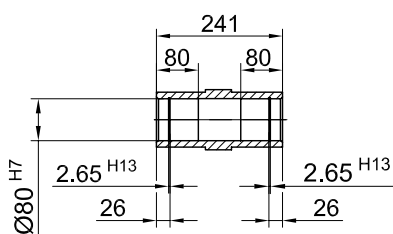


mit Drehmomentstütze/
 with torque arm/
 avec bras de réaction

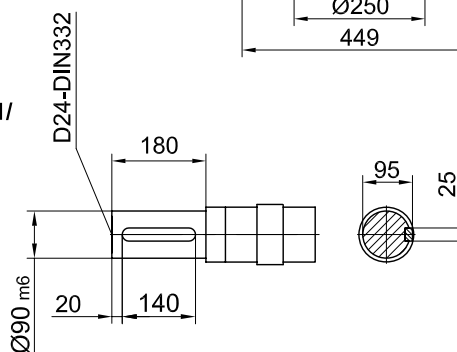
Code -0./



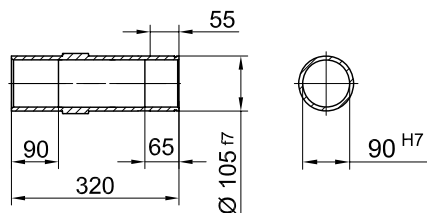
Code -4/



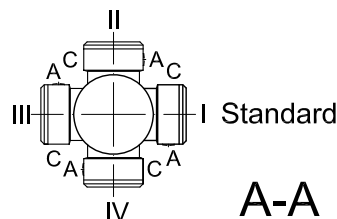
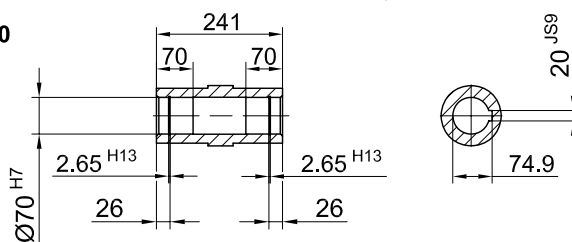
Code -1/



Code -5/



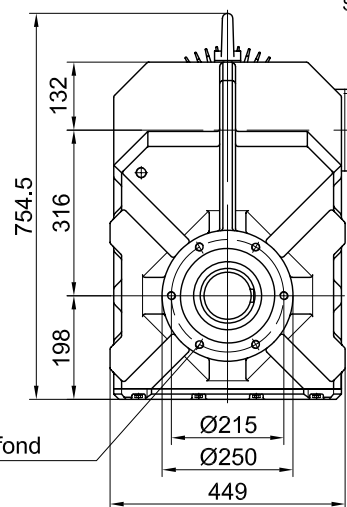
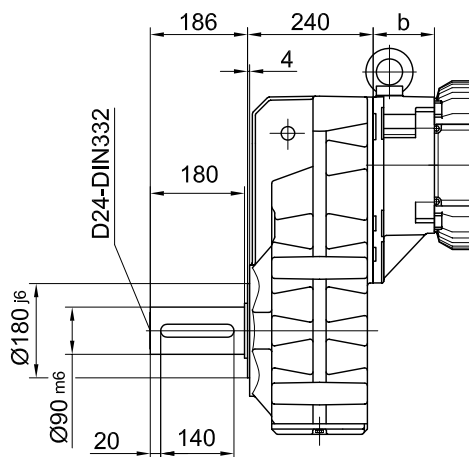
Code -4/K70



Typ/ Type/ Type	a	b	c	d	i	Ausführung mit Bremse/ with brake/ avec frein													
						E008		Z008		Z015		E075		Z075		Z100		E500	
						c _B	d _B	c _B	d _B	c _B	d _B	c _B	d _B	c _B	d _B	c _B	d _B	c _B	d _B
BF70Z-../D08..	200	202	156	648	115	115	166	723											
BF70-../D09..	251	83.5	181	580	124	124	192	660	192	674	192	680							
BF70Z-../D09..	251	216.5	181	713	124	124	192	793	192	807	192	813							
BF70-../D11..	319	90	228	655	181	181				231	758	231	788						
BF70Z-../D11..	319	223	228	788	181	181				231	891	231	921						
BF70-../D13..	393	103	266	742	217	217						277	877	277	896				
BF70Z-../D13..	393	236	266	875	217	217						277	1010	277	1029				
BF70-../D16..	429	117	322	792	243	243						326	925	326	944	326	964		
BF70Z-../D16..	429	250	322	925	243	243						326	1058	326	1077	326	1097		
BF70-../D18..	528	139	368	913	288	288									366	1093	366	1074	

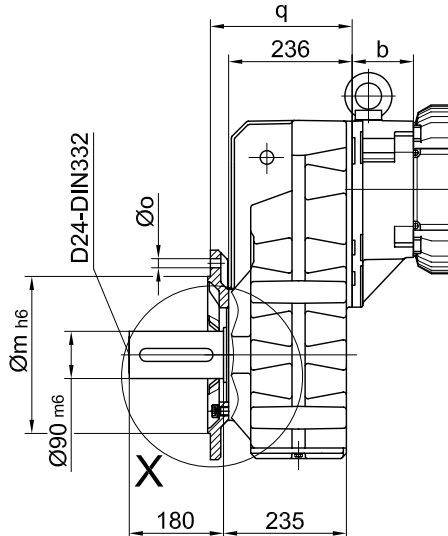
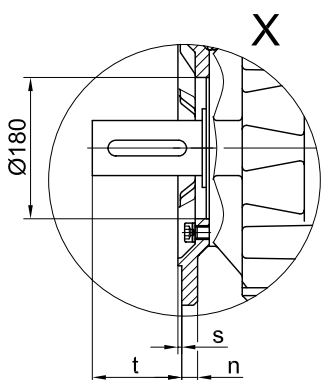
Flansch mit Gewindelöchern/
 flange with tapped holes/
 bride avec trous taraudés

Code -7./

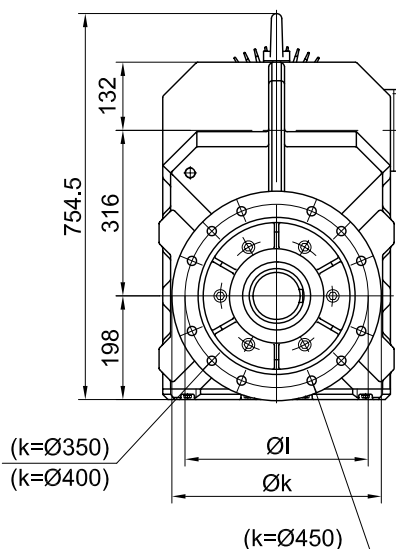


Flansch mit Durchgangslöchern/
 flange with clearance holes/
 bride avec trous débouchants

Code -3./
 (Code -2./)
 (Code -4./)



M16x32 tief/ deep/ profond



Flanschmasse/ Flange dimensions/ cotes de la bride

BF70(Z)	k	l	m	n	o	q	s	t
Standard/ -3./	400	350	300	20	4xØ17.5	271	5	155
klein/ small/ petit -2./	350	300	250	20	4xØ17.5	271	5	155
gross/ big/ grande -4./	450	400	350	22	8xØ17.5	281	5	145

Fuss mit Gewindelöchern links und rechts/ foot with tapped holes left and right/
 fixation à pied avec trous taraudés à gauche et à droite

Code -6.LR/

