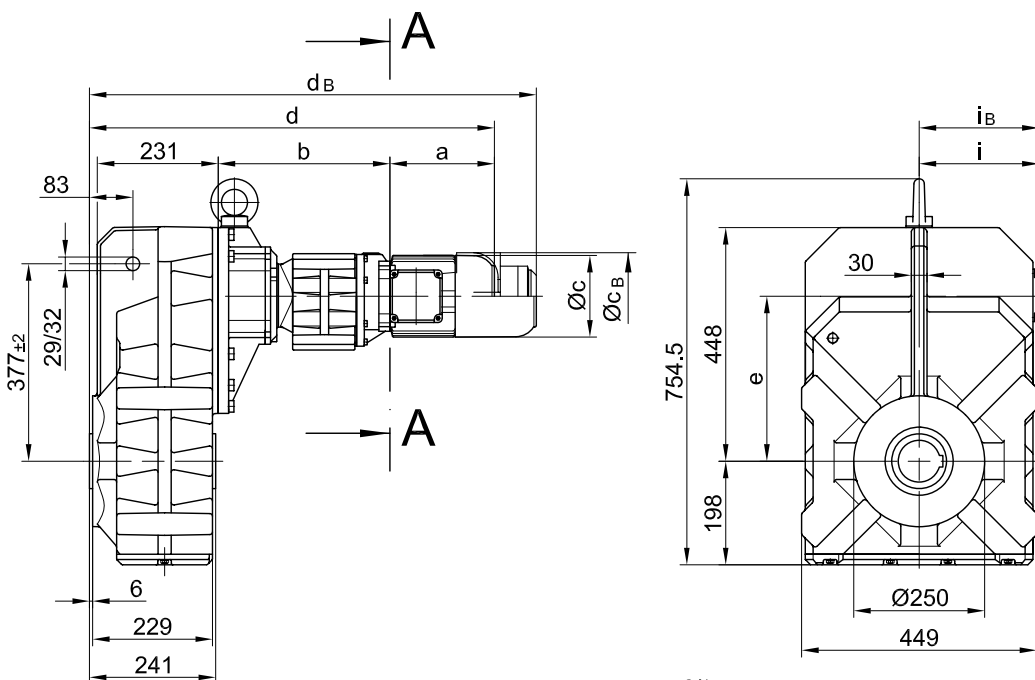


mit Drehmomentstütze/ with torque arm/ avec bras de réaction

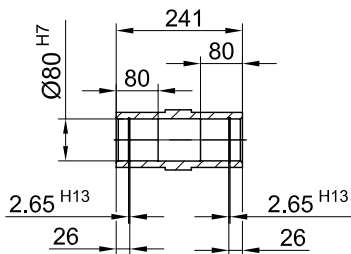
BF70G20

Stand: 30.11.2006 / mk

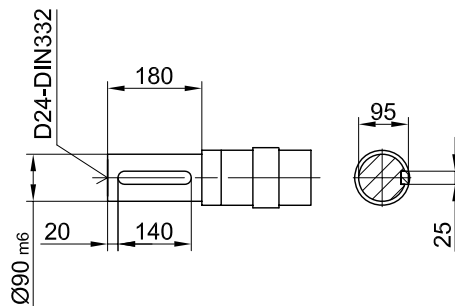
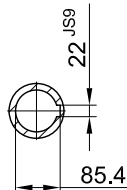
Code -0./



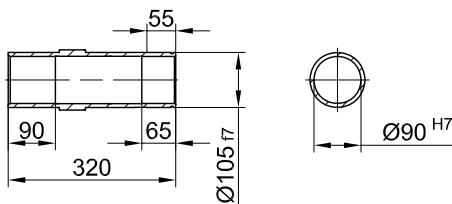
Code -4/



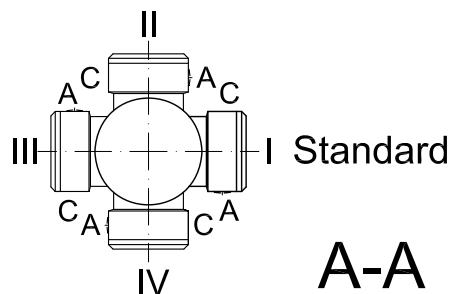
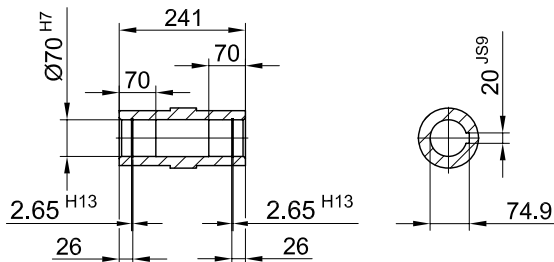
Code -1/



Code -5/



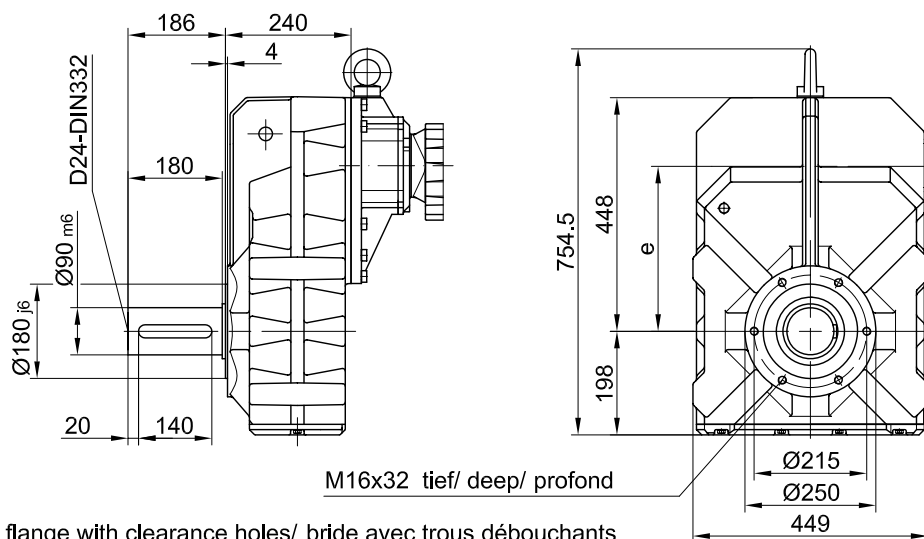
Code -4/K70



Typ/ Type/ Type	a	b	c	d	e	i	Ausführung mit Bremse/ with brake/ avec frein											
							i_B	E003		E004		E008		Z008		Z015		
								c_B	d_B									
BF70G20-../D05..	170	324	123	741	315	100	100	123	783									
BF70G20-../D06..	170	324	123	741	315	100	100	123	783									
BF70G20-../D07..	190	324	123	761	335	100	100	123	803	123	803							
BF70G20-../D08..	200	328	156	775	315	115	115					166	849					
BF70G20-../D09..	251	342.5	181	839	315	124	124					192	919	192	933	192	939	

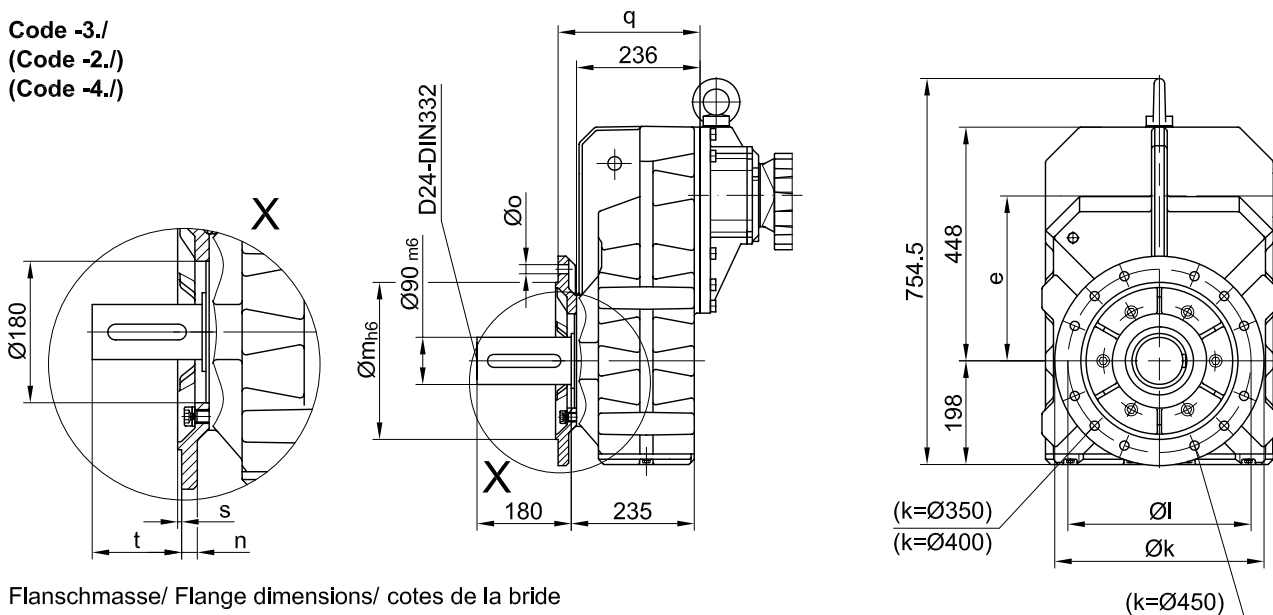
Flansch mit Gewindelöchern/
 flange with tapped holes/
 bride avec trous taraudés

Code -7./



Flansch mit Durchgangslöchern/ flange with clearance holes/ bride avec trous débouchants

Code -3./
(Code -2./)
(Code -4./)



Flanschmasse/ Flange dimensions/ cotes de la bride

BF70G..	k	l	m	n	o	q	s	t
Standard/ -3./	400	350	300	20	4x17.5	271	5	155
klein/ small/ petit -2./	350	300	250	20	4x17.5	271	5	155
gross/ big/ grande -4./	450	400	350	22	8x17.5	281	5	145

Fuss mit Gewindelöchern links und rechts/ foot with tapped holes left and right/
 fixation à pied avec trous taraudés à gauche et à droite

Code -6.LR/

