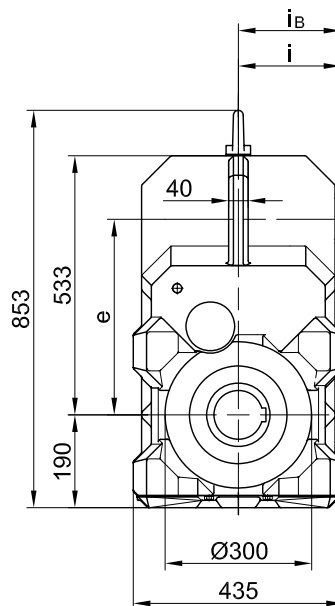
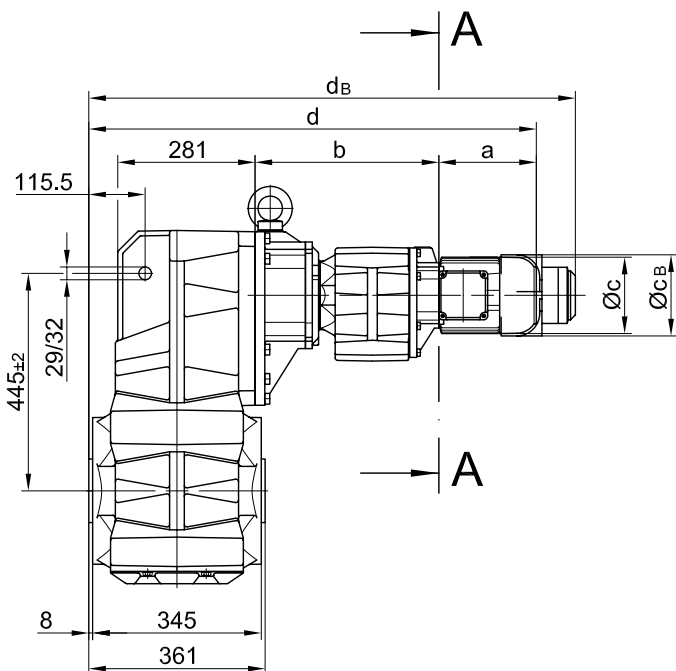


mit Drehmomentstütze/ with torque arm/ avec bras de réaction

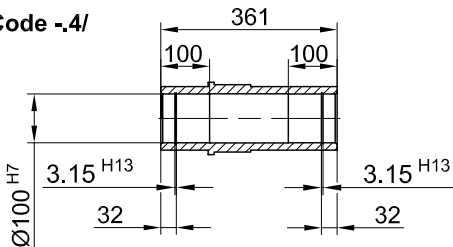
BF80G40

Stand: 30.11.2006 / mk

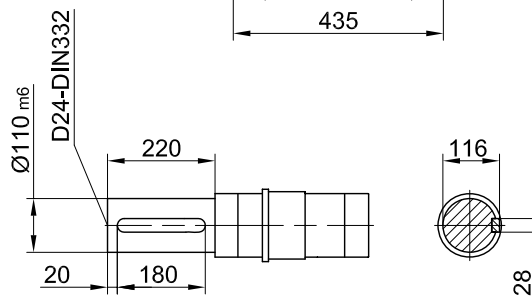
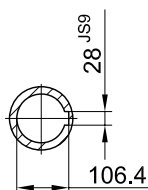
Code -0./



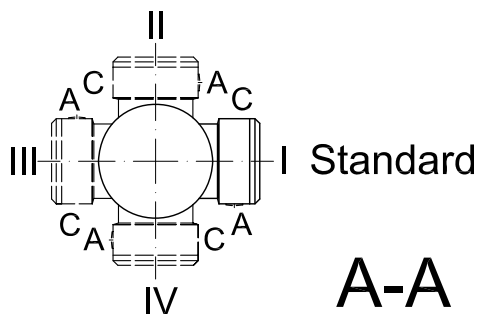
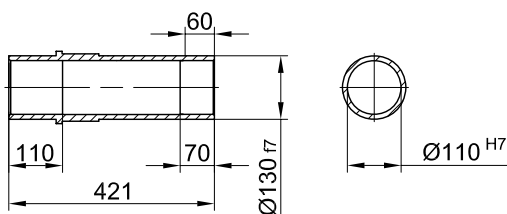
Code -4/



Code -1/



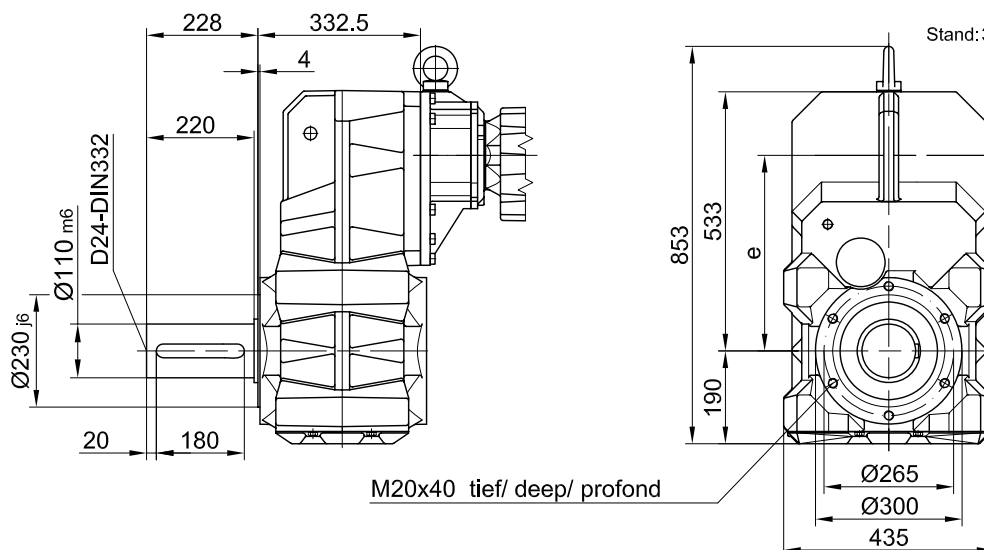
Code -5/



Typ/ Type/ Type	a	b	c	d	e	i	Ausführung mit Bremse/ with brake/ avec frein										
							i _B	E008		Z008		Z015		E075			
								c _B	d _B	c _B	d _B	c _B	d _B	c _B	d _B		
BF80G40-../D08..	200	376	156	916	400	115	115	166	991								
BF80G40-../D09..	251	390.5	181	982	400	124	124	192	1061	192	1075	192	1081				
BF80G40-../D11..	319	397	228	1057	400	181	181					231	1159	231	1188		

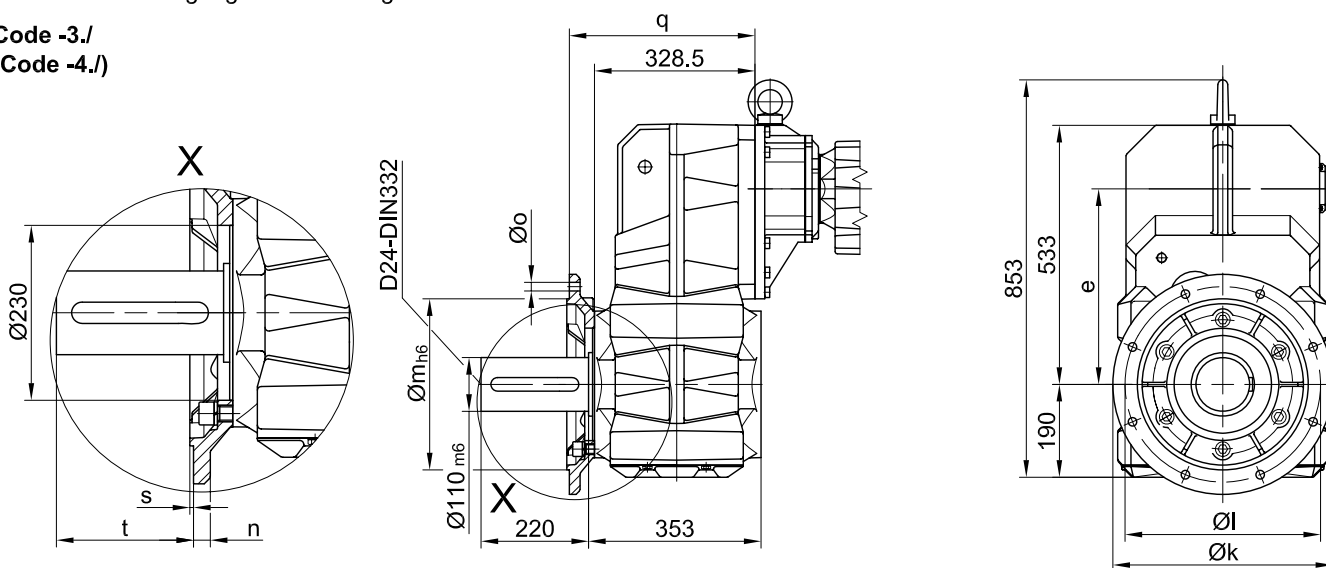
Flansch mit Gewindelöchern/
 flange with tapped holes/
 bride avec trous taraudés

Code -7./



Flansch mit Durchgangslöchern/ flange with clearance holes/ bride avec trous débouchants

**Code -3./
 (Code -4./)**



Flanschmasse/ Flange dimensions/ cotes de la bride

BF80G..	k	l	m	n	o	q	s	t
Standard/ -3./	450	400	350	22	17.5	383.5	5	177
gross/ big/ grande -4./	550	500	450	22	17.5	388.5	5	172

Fuss mit Durchgangslöchern links und rechts/ foot with clearance holes left and right/
 fixation à pied avec trous débouchants à gauche et à droite

Code -1.LR/

