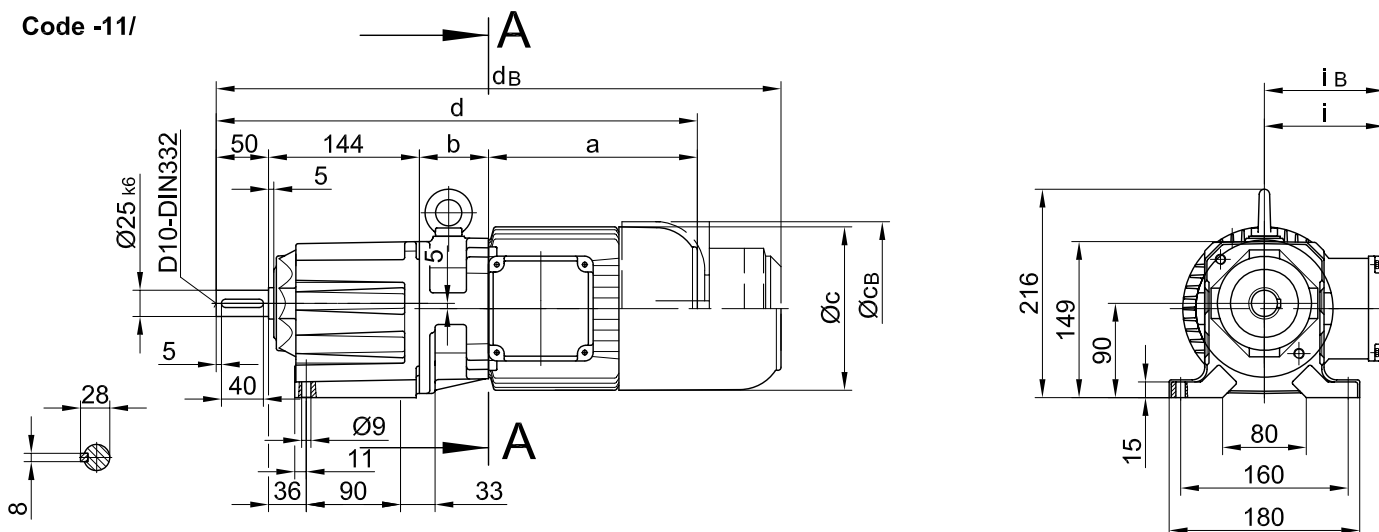


Fussausführung mit Durchgangslöchern/ Foot mounting with clearance holes/
 fixation à pied avec trous débouchants

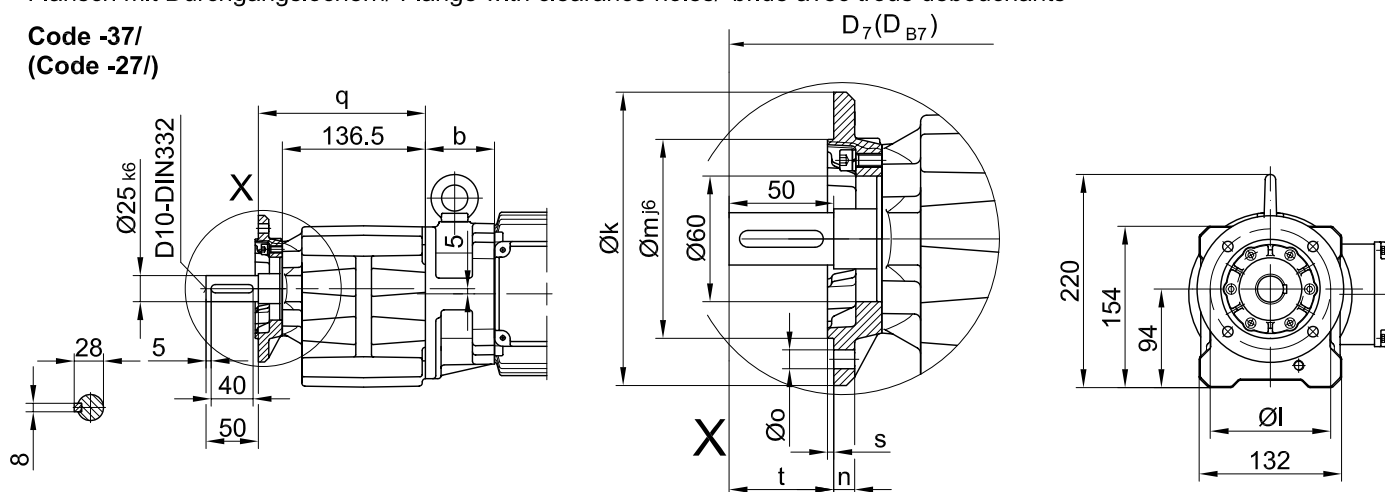
BG10X-BG10XZ
 Stand: 30.11.2006 / mk

Code -11/



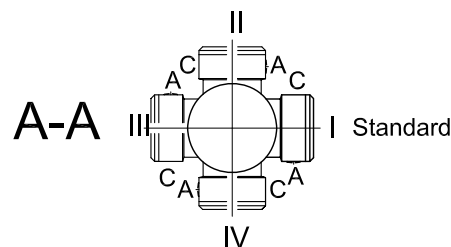
Flansch mit Durchgangslöchern/ Flange with clearance holes/ bride avec trous débouchants

Code -37/
 (Code -27/)



Flanschmaße/ Flange dimensions/ cotes de la bride

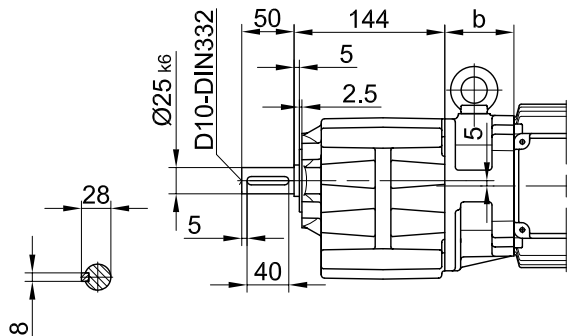
BG10X(Z)	k	l	m	n	o	q	s	t	D ₇	D _{B7}
Standard/ -37/	Ø140	Ø115	Ø95	10	Ø9	159.5	3	50	d+15.5	d _B +15.5
klein/ small/ petit -27/	Ø120	Ø100	Ø80	8	Ø6.6	154.5	3	55	d+15.5	d _B +15.5



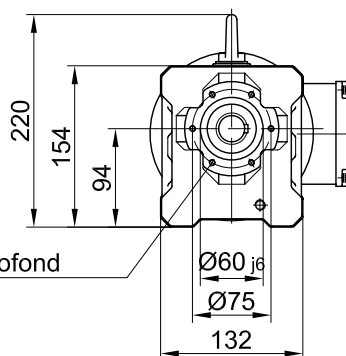
Typ/ Type/ Type	a	b	c	d	i	Ausführung mit Bremse/ with brake/ avec frein										
						E003		E004		E008		Z008		Z015		
						c _B	d _B	c _B	d _B	c _B	d _B	c _B	d _B	c _B	d _B	
BG10XZ-.1/D04..	143	86	111	423	90	90	111	466								
BG10X-.1/D05..	170	62	123	427	100	100	123	469								
BG10XZ-.1/D05..	170	88	123	453	100	100	123	495								
BG10X-.1/D06..	170	62	123	427	100	100	123	469								
BG10XZ-.1/D06..	170	88	123	453	100	100	123	495								
BG10X-.1/D07..	190	62	123	447	100	100	123	489	123	489						
BG10XZ-.1/D07..	190	88	123	473	100	100	123	515	123	515						
BG10X-.1/D08..	200	66	156	460	115	115			166	535						
BG10XZ-.1/D08..	200	132	156	526	115	115			166	601						
BG10X-.1/D09..	251	80.5	176	525	124	124			192	605	192	619	192	625		

Flansch mit Gewindelöchern/ flange with tapped holes/ bride avec trous taraudés

Code -71/

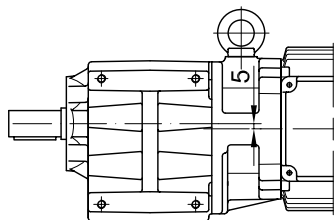
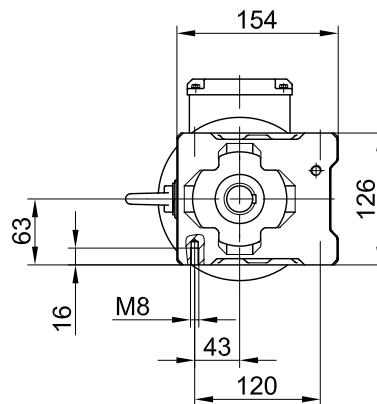
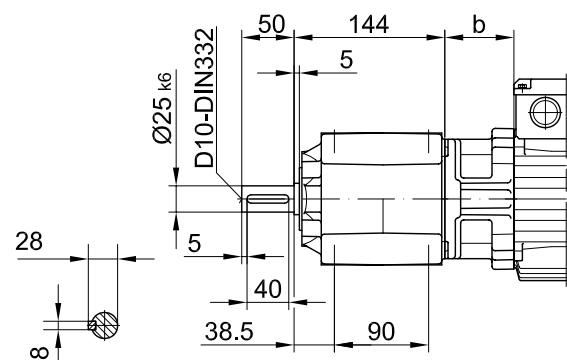


M6x12tief/ deep/ profond



Fuss mit Gewindelöchern links und rechts/ foot with tapped holes left and right/
 fixation à pied avec trous taraudés à gauche et à droite

Code -61LR/



Fussplatte links/ foot plate left/ fixation du pied à gauche

Code -91L/

