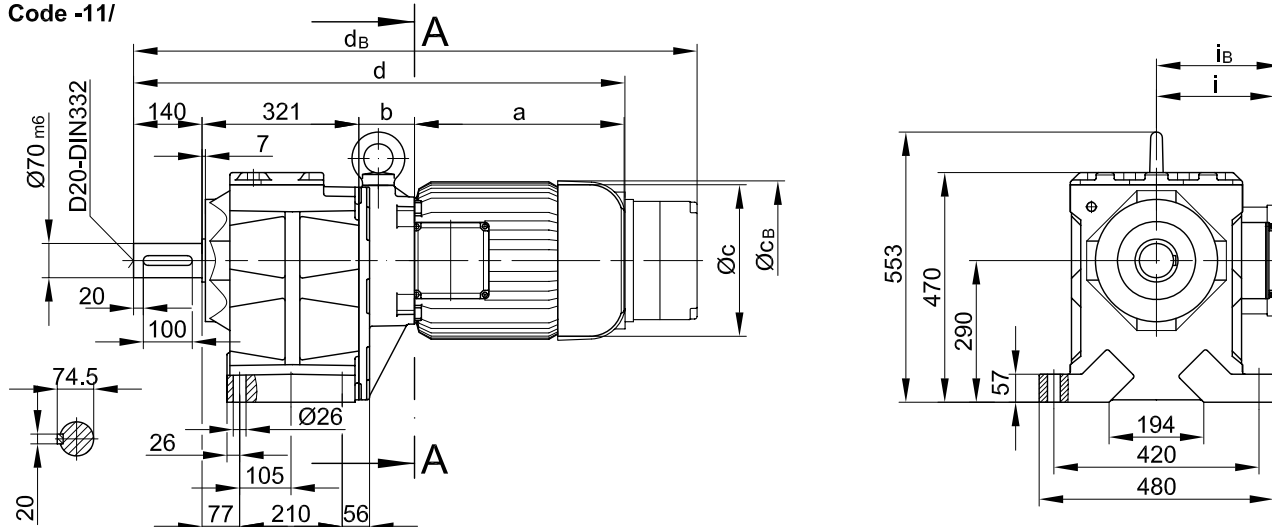


Fussausführung mit Durchgangslöchern/ Foot mounting with clearance holes/
 fixation à pied avec trous débouchants

Code -11/

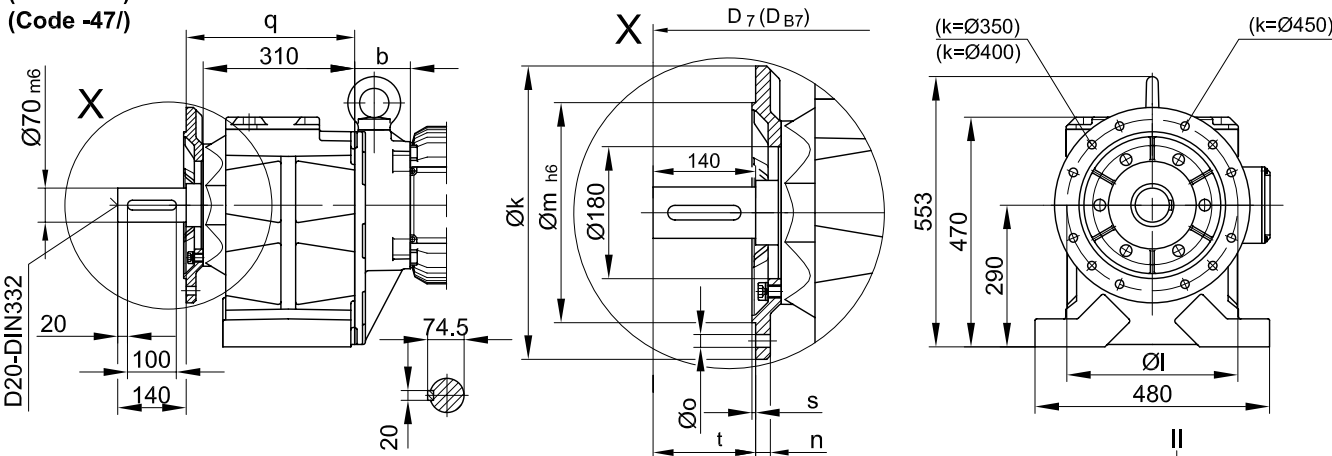


Flansch mit Durchgangslöchern/ Flange with clearance holes/ bride avec trous débouchants

Code -37/

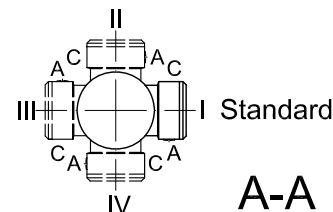
(Code -27/)

(Code -47/)



Flanschmasse/ Flange dimensions/ cotes de la bride

BG80(Z)	k	l	m	n	o	q	s	t	D_7	D_{B7}
Standard/ -37/	400	350	300	20	4 x 17.5	345	5	140	$d+24$	d_B+24
klein/ small/ petit -27/	350	300	250	20	4 x 17.5	345	5	140	$d+24$	d_B+24
groß/ big/ grande -47/	450	400	350	22	8 x 17.5	355	5	130	$d+24$	d_B+24



Typ/ Type/ Type	a	b	c	d	i	Ausführung mit Bremse/ with brake/ avec frein								
						E008		Z008		Z015		E075		
						c_B	d_B	c_B	d_B	c_B	d_B	c_B	d_B	
BG80Z-../D09..	251	252.5	181	965	124	124	192	1043	192	1058	192	1064		
BG80-../D11..	319	87	228	867	181	181					231	970	231	1000
BG80Z-../D11..	319	259	228	1039	181	181					231	1142	231	1172
Typ/ Type/ Type	a	b	c	d	i									
						E075		Z075		Z100		E500		
						c_B	d_B	c_B	d_B	c_B	d_B	c_B	d_B	
BG80-../D13..	393	100	266	954	217	217	277	1089	277	1108				
BG80Z-../D13..	393	272	266	1126	217	217	277	1261	277	1280				
BG80-../D16..	429	114	322	1004	243	243	326	1137	326	1156	326	1176		
BG80Z-../D16..	429	286	322	1176	243	243	326	1309	326	1328	326	1348		
BG80-../D18..	528	136	368	1125	288	288					366	1305	366	1286
BG80-../C-DNF22S	612	281	390	1354	314									
BG80-../C-DNF22M	652	281	390	1394	314									

