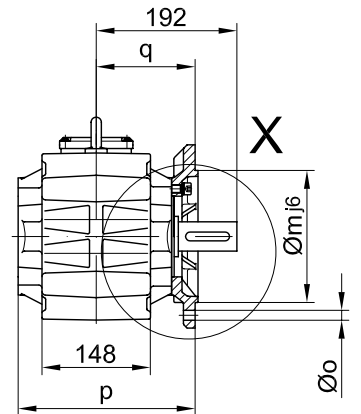
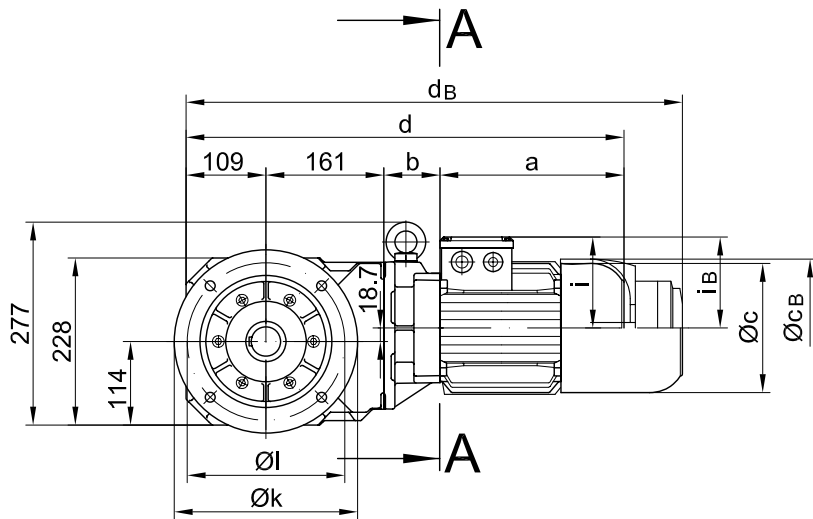


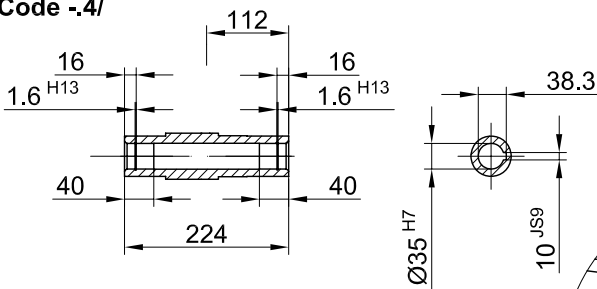
Flansch mit Durchgangslöchern vorne/ flange with clearance holes at front/

bride avec trous débouchants à l'avant

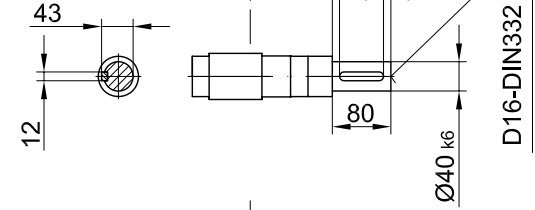
**Code -3.V/**  
**(Code -2.V/)**



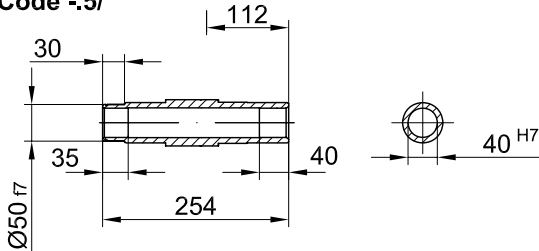
**Code -4/**



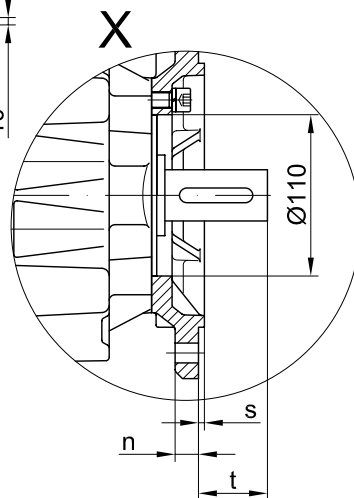
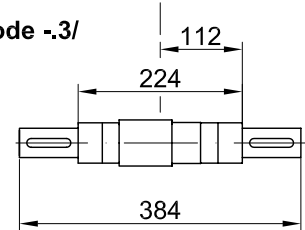
**Code -1/**



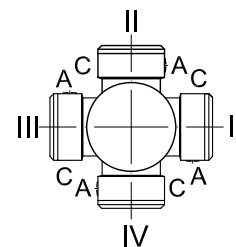
**Code -5/**



**Code -3/**



Standard



**A-A**

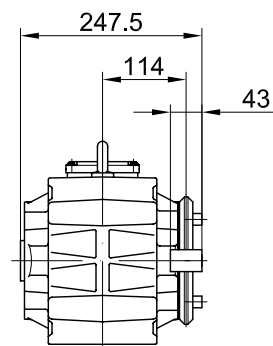
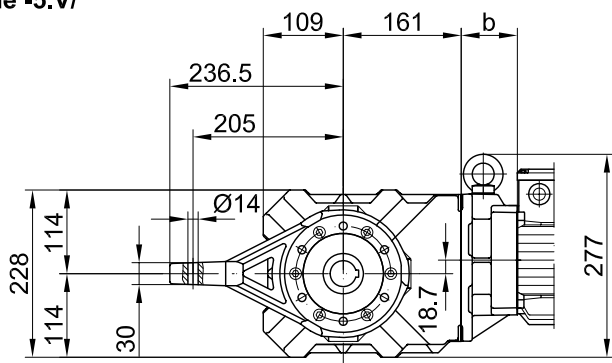
Flanschmasse/ Flange dimensions/ cotes de la bride

BK30(Z)	k	l	m	n	o	p	q	s	t
Standard/ -3.V/	250	215	180	16	13.5	242	135	4	57
klein/ small/ petit-2.V/	200	165	130	12	11	239	132	3.5	60

Typ/ Type/ Type	a	b	c	d	i	Ausführung mit Bremse/ with brake/ avec frein												
						i <sub>B</sub>	E003		E004		E008		Z008		Z015		E075	
							c <sub>B</sub>	d <sub>B</sub>	c <sub>B</sub>	d <sub>B</sub>	c <sub>B</sub>	d <sub>B</sub>	c <sub>B</sub>	d <sub>B</sub>	c <sub>B</sub>	d <sub>B</sub>	c <sub>B</sub>	d <sub>B</sub>
BK30-../D05..	170	58	123	499	100	100	123	541										
BK30Z-../D05..	170	133.5	123	574	100	100	123	616										
BK30-../D06..	170	58	123	499	100	100	123	541										
BK30Z-../D06..	170	133.5	123	574	100	100	123	616										
BK30-../D07..	190	58	123	519	100	100	123	561	123	561								
BK30Z-../D07..	190	133.5	123	594	100	100	123	636	123	636								
BK30-../D08..	200	62	156	532	115	115				166	607							
BK30Z-../D08..	200	137.5	156	607	115	115				166	682							
BK30-../D09..	251	76.5	181	597	124	124				192	677	192	691	192	697			
BK30Z-../D09..	251	152	181	673	124	124				192	752	192	766	192	772			
BK30-../D11..	319	83	228	672	181	181								231	774.5	231	804.5	

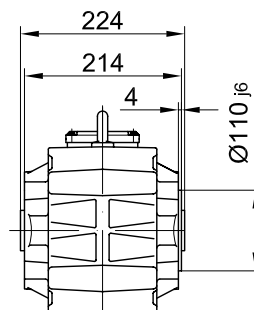
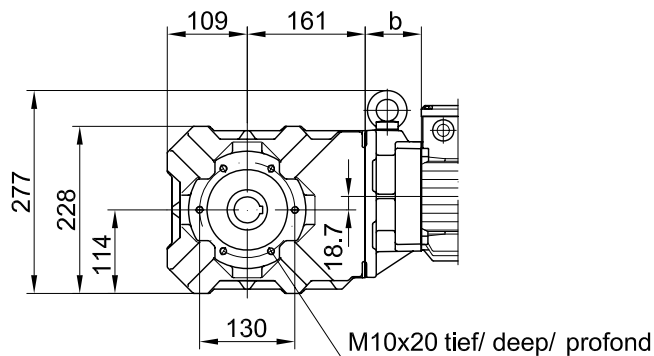
Drehmomentstütze vorne/ torque arm at front/ bras de réaction à l'avant

**Code -5.V/**



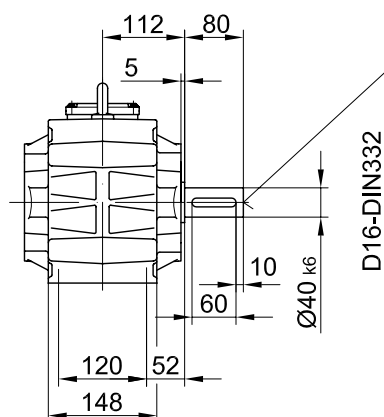
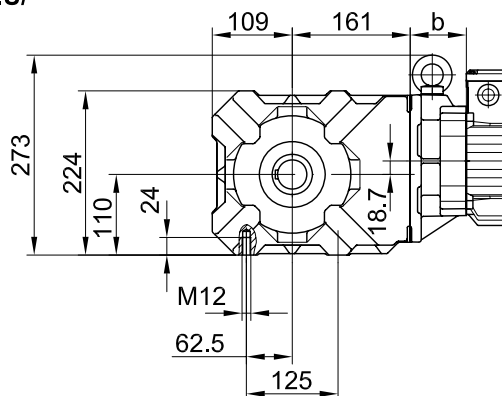
Flansch mit Gewindelöchern vorne/ flange with tapped holes at front/ bride avec trous taraudés à l'avant

**Code -7.V/**



Fuss mit Gewindelöchern unten/ foot with tapped holes at bottom/ fixation à pied avec trous taraudés en bas

**Code -6.U/**



Fuss mit Durchgangslöchern unten/ foot with clearance holes at bottom/ fixation à pied avec trous débouchants en bas

**Code -1.U/**

