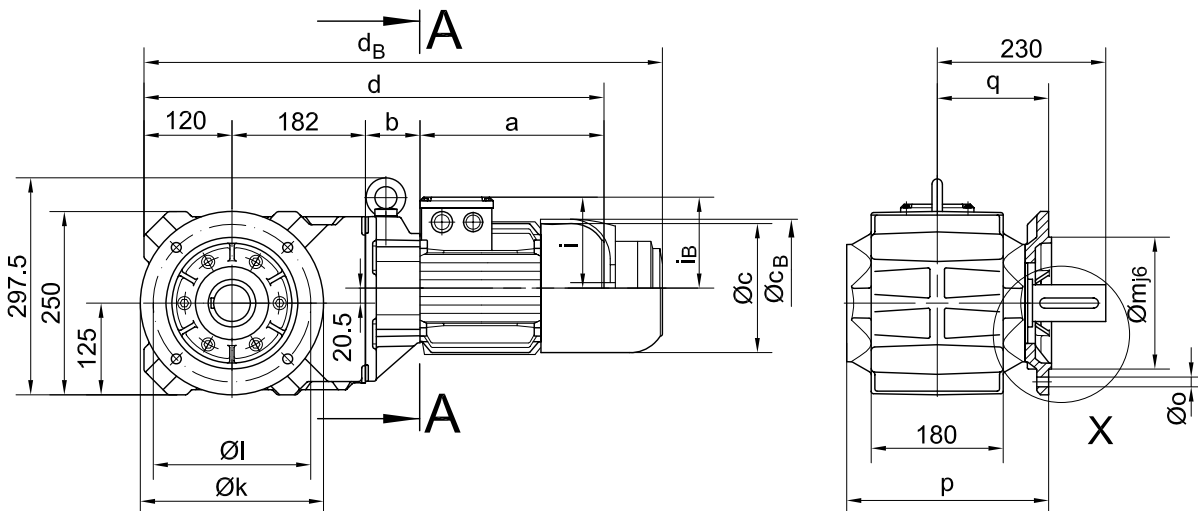
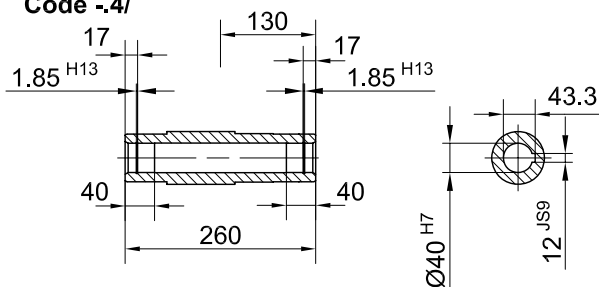


Flansch mit Durchgangslöchern vorne/ flange with clearance holes at front/  
 bride avec trous débouchants à l'avant

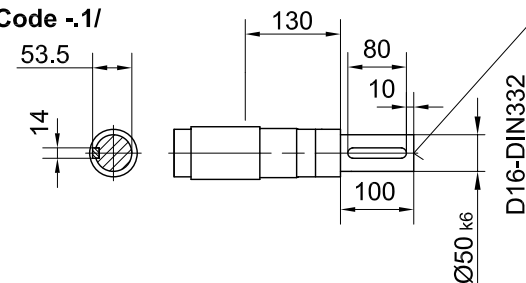
**Code -3.V/  
 (Code -4.V/)**



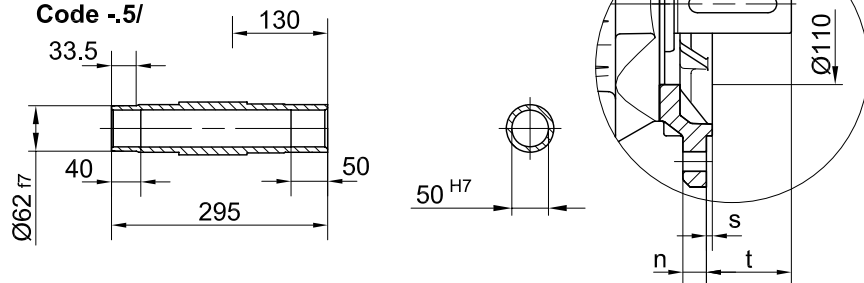
**Code -4/**



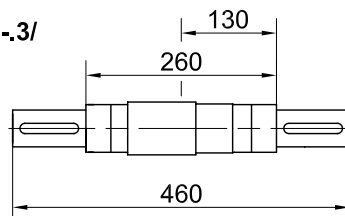
**Code -1/**



**Code -5/**

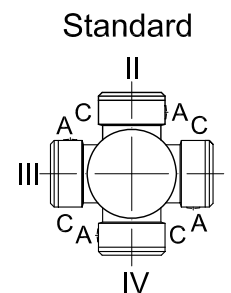


**Code -3/**



Flanschmasse/ Flange dimensions/ cotes de la bride

BK40(Z)	k	l	m	n	o	p	q	s	t
Standard/ -3.V/	250	215	180	16	13.5	276	152	4	78
gross/ big/ grande -4.V/	300	265	230	20	13.5	282	158	4	72

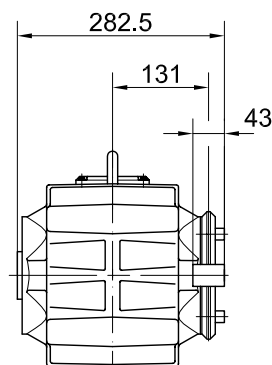
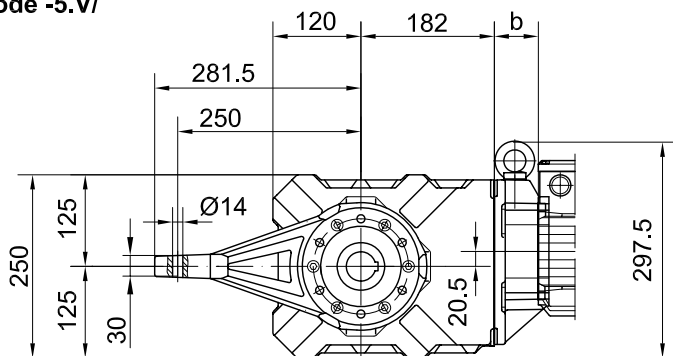


**A-A**

Typ/ Type/ Type	a	b	c	d	i	Ausführung mit Bremse/ with brake/ avec frein												
						i <sub>B</sub>	E003		E004		E008		Z008		Z015		E075	
							c <sub>B</sub>	d <sub>B</sub>	c <sub>B</sub>	d <sub>B</sub>	c <sub>B</sub>	d <sub>B</sub>	c <sub>B</sub>	d <sub>B</sub>	c <sub>B</sub>	d <sub>B</sub>	c <sub>B</sub>	d <sub>B</sub>
BK40Z-../D05..	170	138.5	123	611	100	100	123	653										
BK40Z-../D06..	170	138.5	123	611	100	100	123	653										
BK40Z-../D07..	190	138.5	123	631	100	100	123	673	123	673								
BK40-../D08..	200	60	156	562	115	115					166	637						
BK40Z-../D08..	200	142.5	156	644	115	115					166	719						
BK40-../D09..	251	74.5	181	627	124	124					192	707	192	721	192	727		
BK40Z-../D09..	251	157	181	710	124	124					192	789	192	803	192	809		
BK40-../D11..	319	81	228	702	181	181								231	805	231	835	

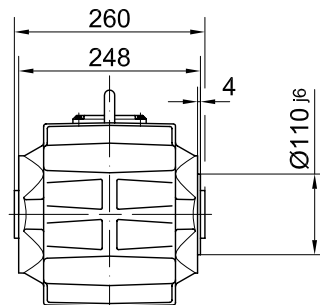
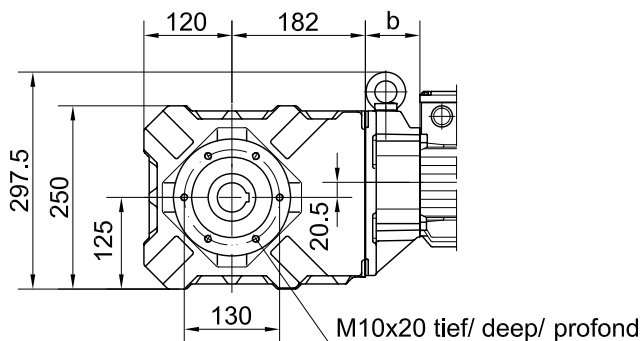
Drehmomentstütze vorne/ torque arm at front/ bras de réaction à l'avant

**Code -5.V/**



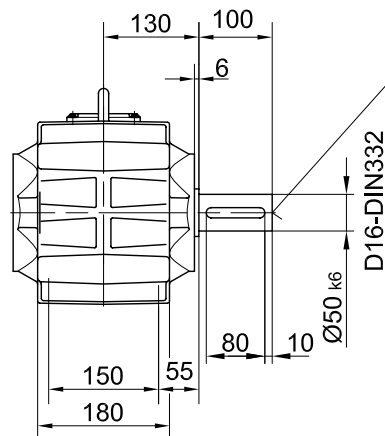
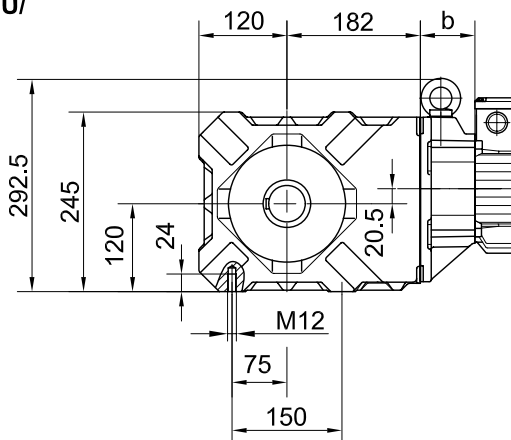
Flansch mit Gewindelöchern vorne/ flange with tapped holes at front/ bride avec trous taraudés à l'avant

**Code -7.V/**



Fuss mit Gewindelöchern unten/ foot with tapped holes at bottom/ fixation à pied avec trous taraudés en bas

**Code -6.U/**



Fuss mit Durchgangslöchern unten/ foot with clearance holes at bottom/ fixation à pied avec trous débouchants en bas

**Code -1.U/**

