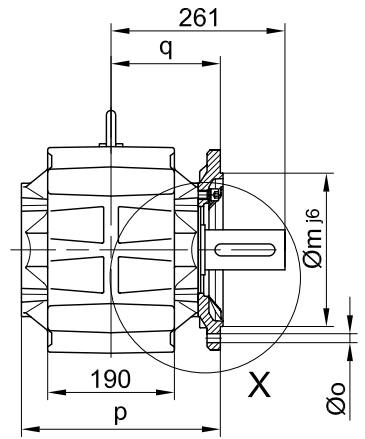
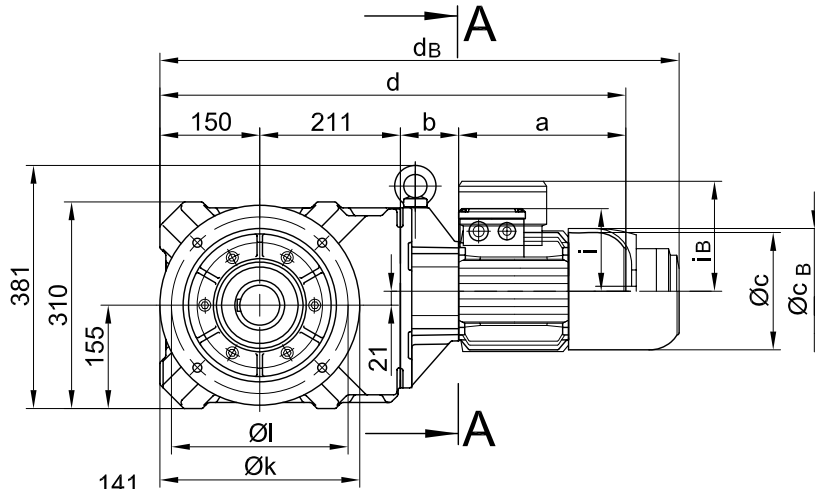
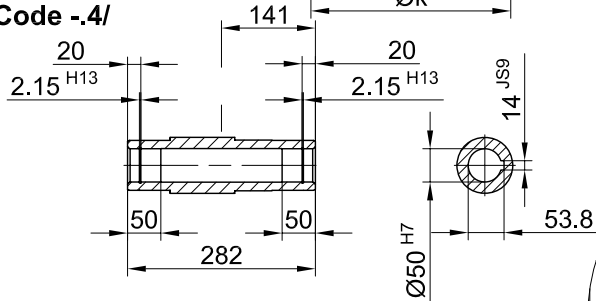


Flansch mit Durchgangslöchern vorne/ flange with clearance holes at front/
 bride avec trous débouchants à l'avant

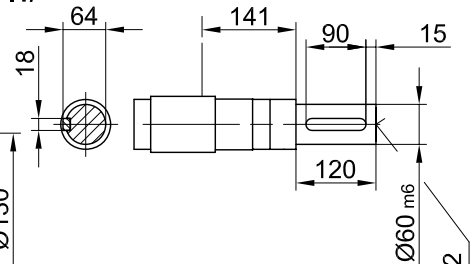
Code -3.V/
 (Code -2.V/)



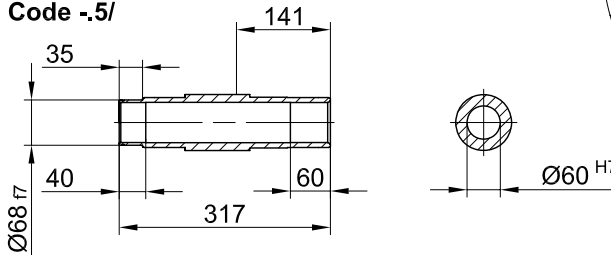
Code -4/



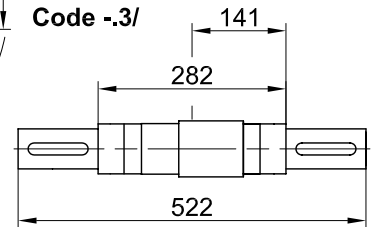
Code -1/



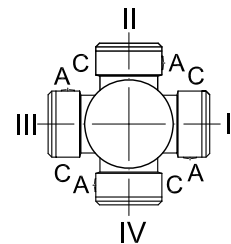
Code -5/



Code -3/



Standard



A-A

Flanschmasse/ Flange dimensions/ cotes de la bride

BK50(Z)	k	l	m	n	o	p	q	s	t
Standard -3.V/	300	265	230	20	13.5	298.5	164	4	97
klein/ small/ petit -2.V/	250	215	180	16	13.5	296	161	4	100

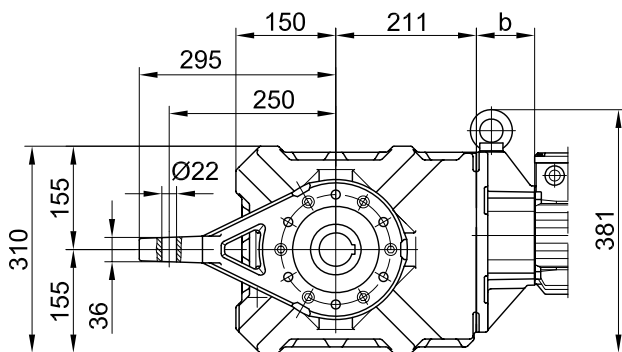
Typ/ Type/ Type	a	b	c	d	i	Ausführung mit Bremse/ with brake/ avec frein																	
						i _B	E003		E004		E008		Z008		Z015		E075		Z075		Z100		
							c _B	d _B	c _B	d _B	c _B	d _B	c _B	d _B	c _B	d _B	c _B	d _B	c _B	d _B	c _B	d _B	
BK50Z-../D05..	170	155	123	687	100	100	123	729															
BK50Z-../D06..	170	155	123	687	100	100	123	729															
BK50Z-../D07..	190	155	123	707	100	100	123	749	123	749													
BK50-../D08..	200	73	156	634	115	115			166	709													
BK50Z-../D08..	200	159	156	720	115	115			166	795													
BK50-../D09..	251	87.5	181	699	124	124			192	779	192	793	192	799									
BK50Z-../D09..	251	173.5	181	785	124	124			192	865	192	879	192	885									
BK50-../D11..	319	94	228	774	181	181							231	877	231	907							
BK50-../D13..	393	107	266	861	217	217									277	996	277	1015					
BK50-../D16..	429	121	322	911	243	243									310	1044	310	1063	310	1083			

Drehmomentstütze vorne/ torque arm at front/ bras de réaction à l'avant

BK50-BK50Z

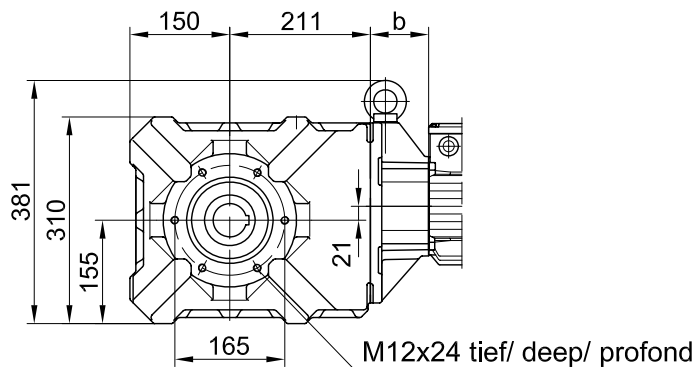
Stand: 30.11.2006 / mk

Code -5.V/



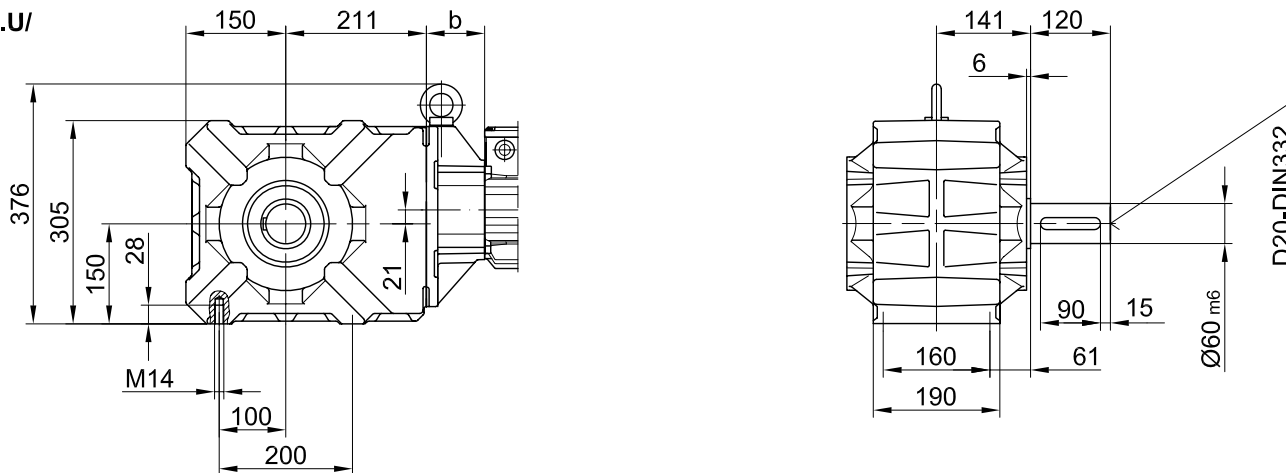
Flansch mit Gewindelöchern vorne/ flange with tapped holes at front/ bride avec trous taraudés à l'avant

Code -7.V/



Fuss mit Gewindelöchern unten/ foot with tapped holes at bottom/ fixation à pied avec trous taraudés en bas

Code -6.U/



Fuss mit Durchgangslöchern unten/ foot with clearance holes at bottom/ fixation à pied avec trous débouchants en bas

Code -1.U/

