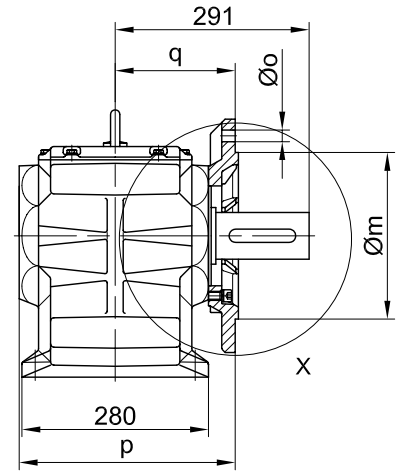
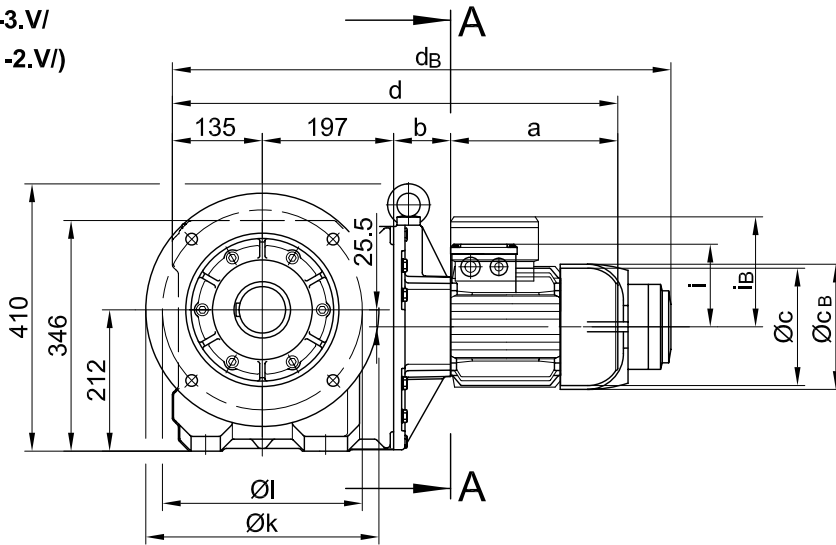
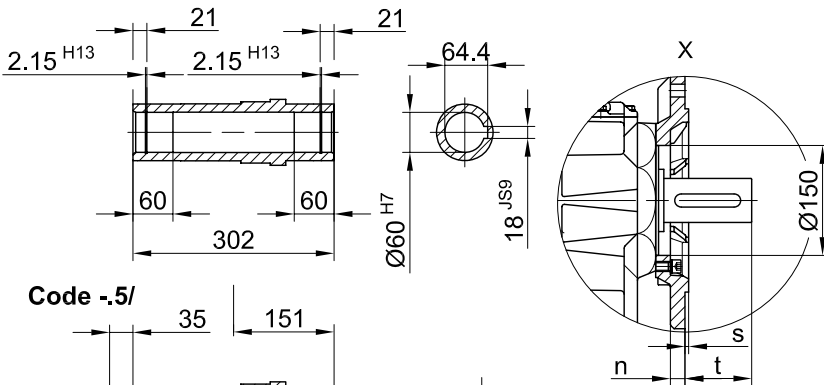


Flansch mit Durchgangslöchern vorne/ flange with clearance holes at front/  
 bride avec trous débouchants à l'avant

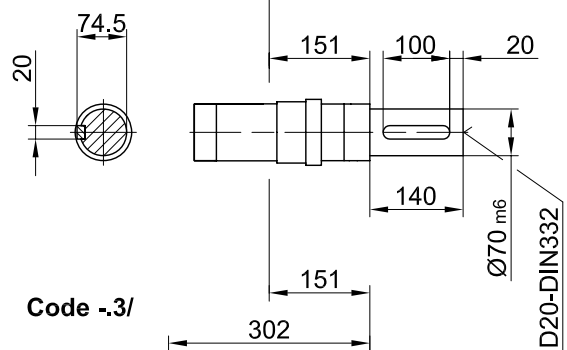
**Code -3.V/  
 (Code -2.V/)**



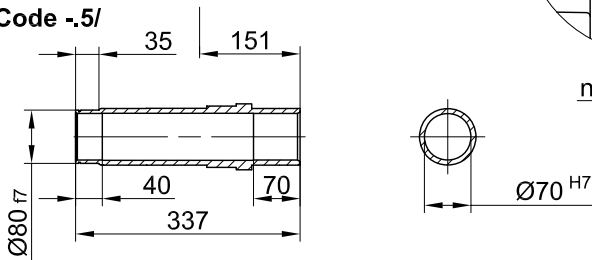
**Code -4/**



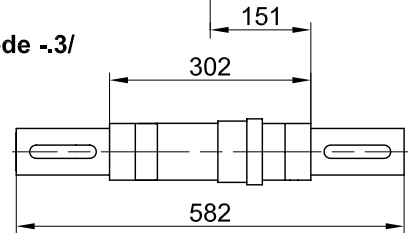
**Code -1/**



**Code -5/**

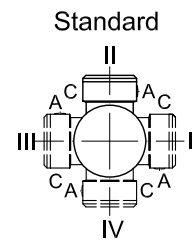


**Code -3/**



Flanschmasse/ Flange dimensions/ cotes de la bride

BK60(Z)	k	l	m	n	o	p	q	s	t
Standard/ -3.V/	350	300	250 <sub>H6</sub>	20	17.5	324	180	5	111
klein/ small/ petit-2.V/	300	265	230 <sub>J6</sub>	20	13.5	332	188	4	103

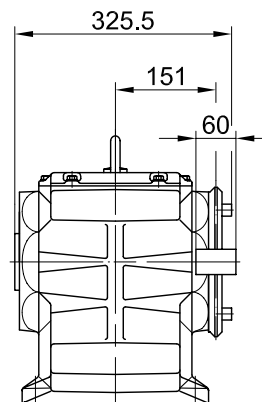
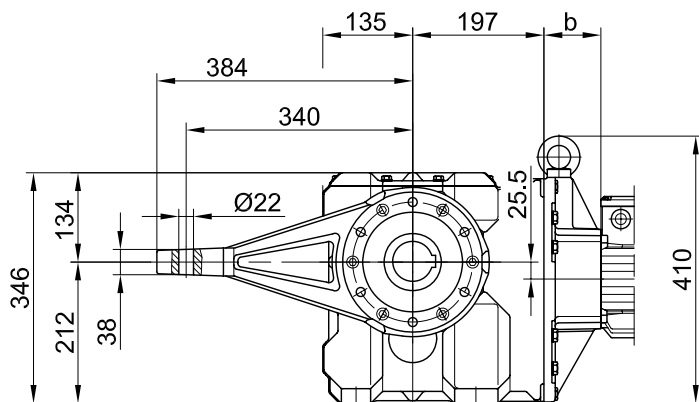


**A-A**

Typ/ Type/ Type	a	b	c	d	i	Ausführung mit Bremse/ with brake/ avec frein												
						i <sub>B</sub>	E008		Z008		Z015		E075		Z075		Z100	
							c <sub>B</sub>	d <sub>B</sub>	c <sub>B</sub>	d <sub>B</sub>	c <sub>B</sub>	d <sub>B</sub>	c <sub>B</sub>	d <sub>B</sub>	c <sub>B</sub>	d <sub>B</sub>	c <sub>B</sub>	d <sub>B</sub>
BK60Z-../D08..	200	181	156	713	115	115	166	788										
BK60-../D09..	251	85.5	181	668	124	124	192	748	192	762	192	768						
BK60Z-../D09..	251	195.5	181	778	124	124	192	858	192	872	192	878						
BK60-../D11..	319	92	228	743	181	181					231	846	231	876				
BK60Z-../D11..	319	202	228	853	181	181					231	956	231	986				
BK60-../D13..	393	105	266	830	217	217							277	965	277	984		
BK60-../D16..	429	119	322	880	243	243							326	1013	326	1032	326	1052

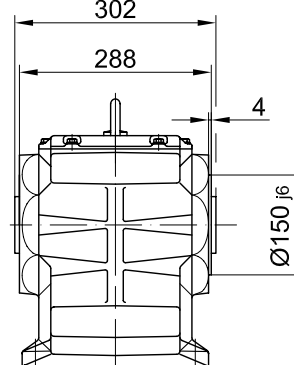
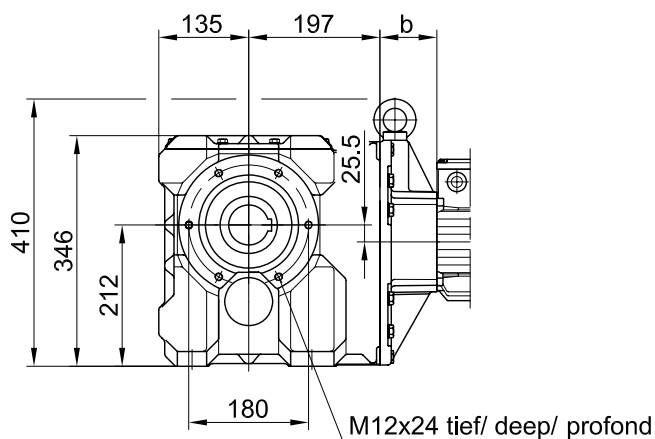
Drehmomentstütze vorne/ torque arm at front/ bras de réaction à l'avant

**Code -5.V/**



Flansch mit Gewindelöchern vorne/ flange with tapped holes at front/ bride avec trous taraudés à l'avant

**Code -7.V/**



Fuss mit Durchgangslöchern unten/ foot with clearance holes at bottom/ fixation à pied avec trous débouchants en bas

**Code -1.U/**

