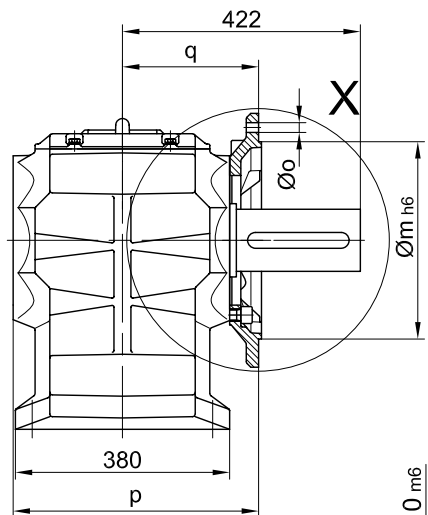
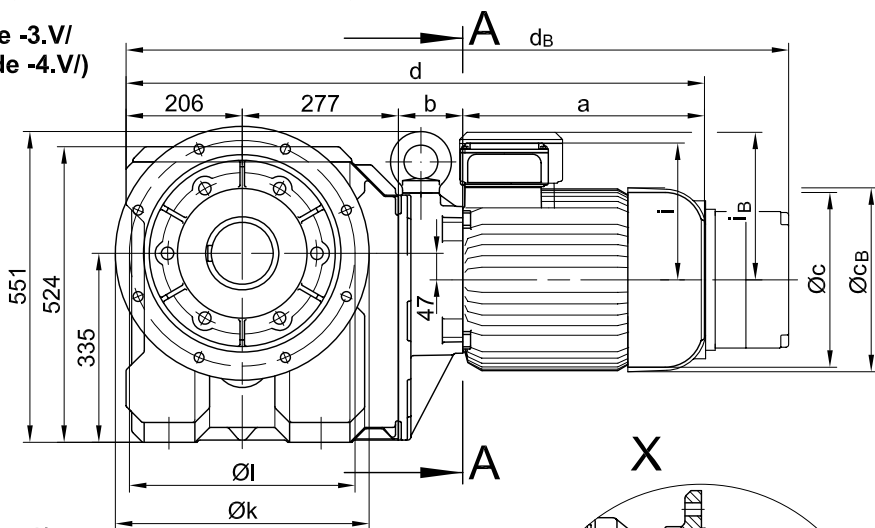
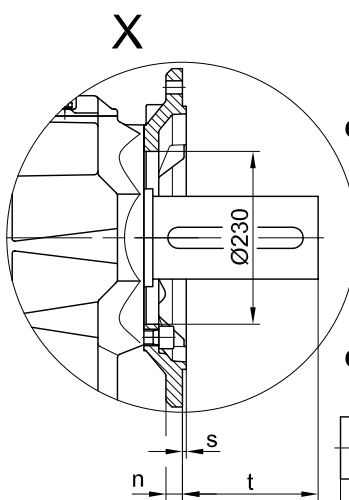
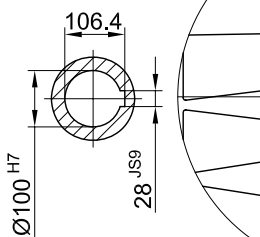
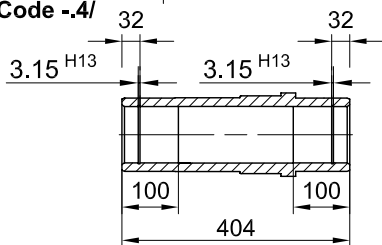


Flansch mit Durchgangslöchern vorne/ flange with clearance holes at front/  
 bride avec trous débouchants à l'avant

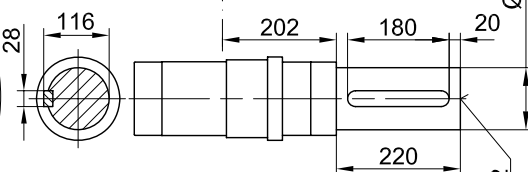
Code -3.V/  
 (Code -4.V/)



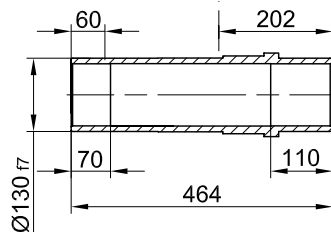
Code -4/



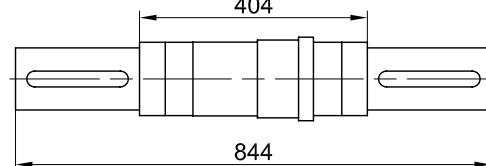
Code -1/



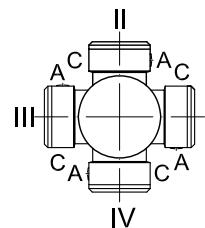
Code -5/



Code -3/



Standard



A-A

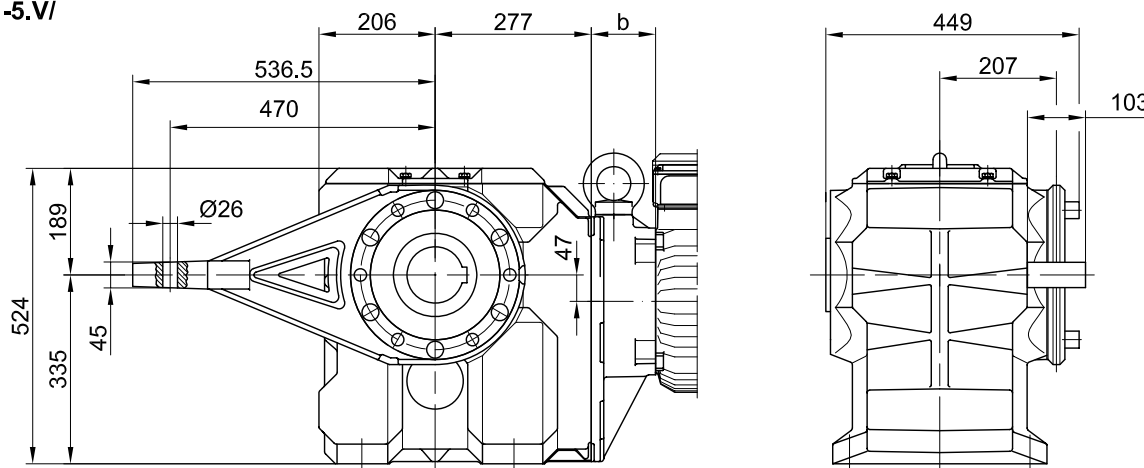
Flanschmasse/ Flange dimensions/ cotes de la bride

BK80(Z)	k	l	m	n	o	p	q	s	t
Standard/ -3.V/	450	400	350	22	17.5	439	245	5	177
gross/ big/ grande -4.V/	550	500	450	22	17.5	444	250	5	172

Typ/ Type/ Type	a	b	c	d	i	Ausführung mit Bremse/ with brake/ avec frein								
						i <sub>B</sub>	E008		Z008		Z015		E075	
							c <sub>B</sub>	d <sub>B</sub>	c <sub>B</sub>	d <sub>B</sub>	c <sub>B</sub>	d <sub>B</sub>	c <sub>B</sub>	d <sub>B</sub>
BK80Z-../D09..	251	252.5	181	986	124	124	192	1066	192	1080	192	1086		
BK80-../D11..	319	87	228	889	181	181					231	992	231	1022
BK80Z-../D11..	319	259	228	1061	181	181					231	1164	231	1194
Typ/ Type/ Type	a	b	c	d	i	i <sub>B</sub>	E075		Z075		Z100		E500	
							c <sub>B</sub>	d <sub>B</sub>	c <sub>B</sub>	d <sub>B</sub>	c <sub>B</sub>	d <sub>B</sub>	c <sub>B</sub>	d <sub>B</sub>
						BK80-../D13..	393	100	266	976	217	217	277	1111
BK80Z-../D13..	393	272	266	1148	217	217	277	1283	277	1302				
BK80-../D16..	429	114	322	1026	243	243	326	1159	326	1178	326	1198		
BK80Z-../D16..	429	286	322	1198	243	243	326	1331	326	1350	326	1370		
BK80-../D18..	528	136	368	1147	288	288					366	1327	366	1308
BK80-../C-DNF22S	612	281	390	1376	314									
BK80-../C-DNF22M	652	281	390	1416	314									

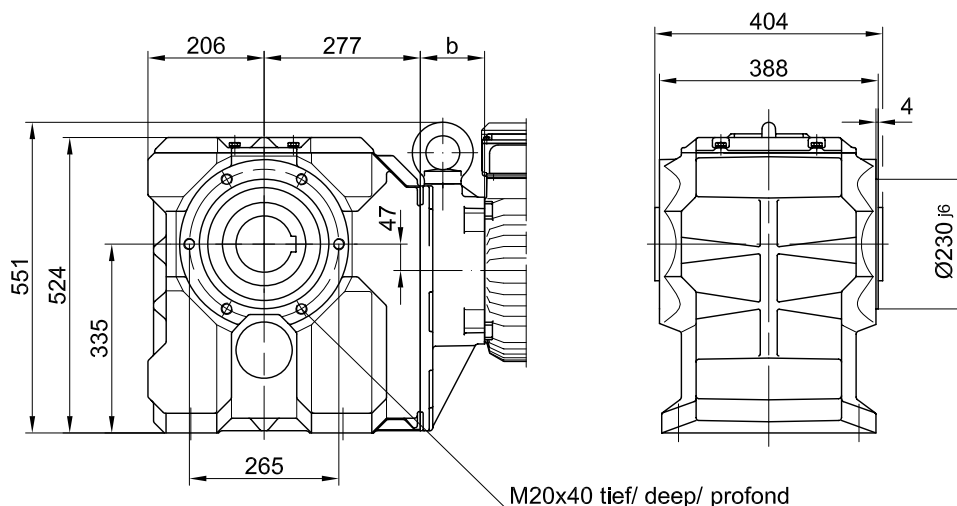
Drehmomentstütze vorne/ torque arm at front/ bras de réaction à l'avant

**Code -5.V/**



Flansch mit Gewindelöchern vorne/ flange with tapped holes at front/ bride avec trous taraudés à l'avant

**Code -7.V/**



Fuss mit Durchgangslöchern unten/ foot with clearance holes at bottom/ fixation à pied avec trous débouchants en bas

**Code -1.U/**

