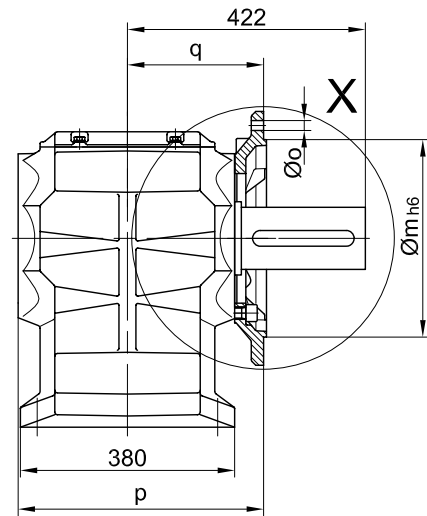
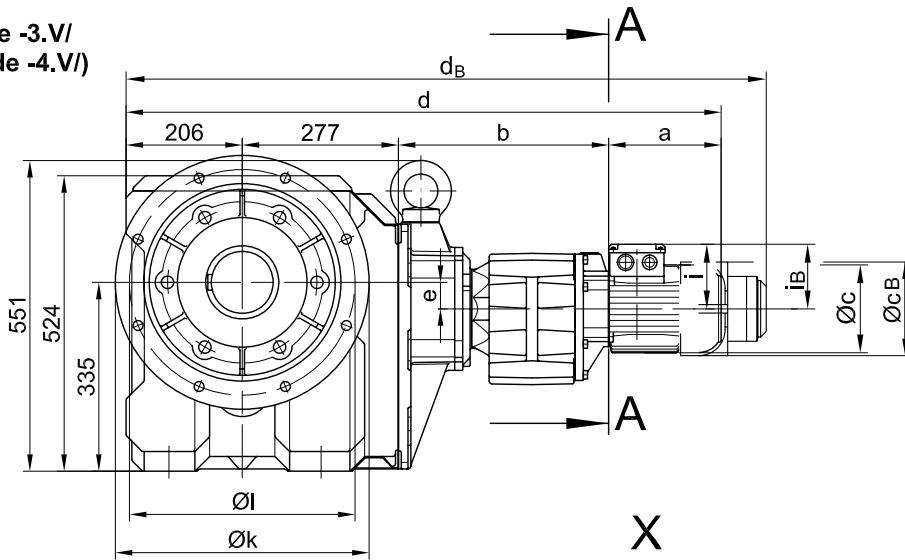
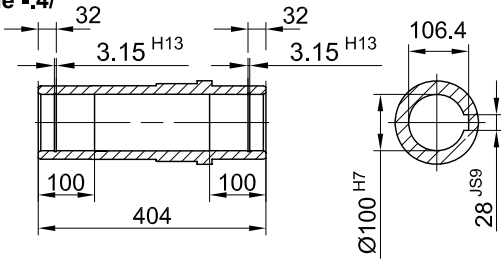


Flansch mit Durchgangslöchern vorne/ flange with clearance holes at front/  
 bride avec trous débouchants à l'avant

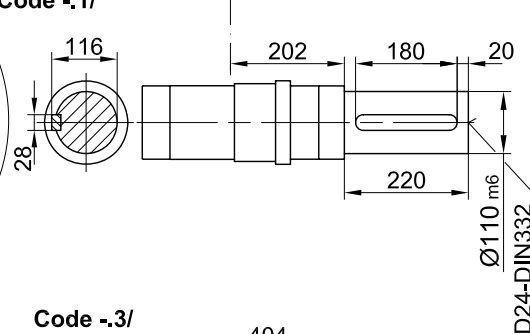
Code -3.V/  
 (Code -4.V/)



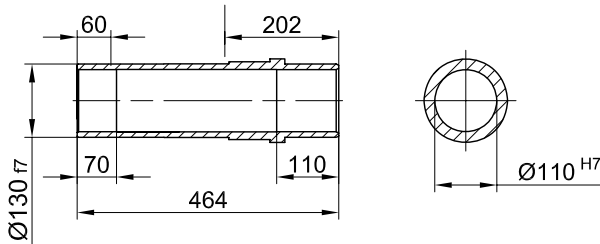
Code -4/



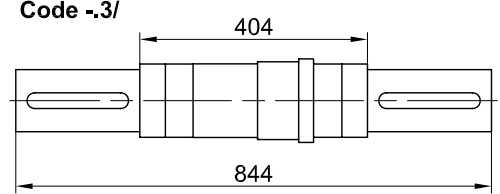
Code -1/



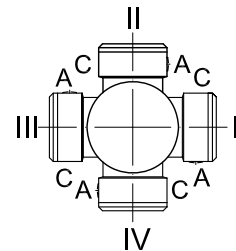
Code -5/



Code -3/



Standard



A-A

Flanschmasse/ Flange dimensions/ cotes de la bride

BK80G..	k	l	m	n	o	p	q	s	t
Standard/ -3.V/	450	400	350	22	17.5	439	245	5	177
gross/ big/ grande -4.V/	550	500	450	22	17.5	444	250	5	172

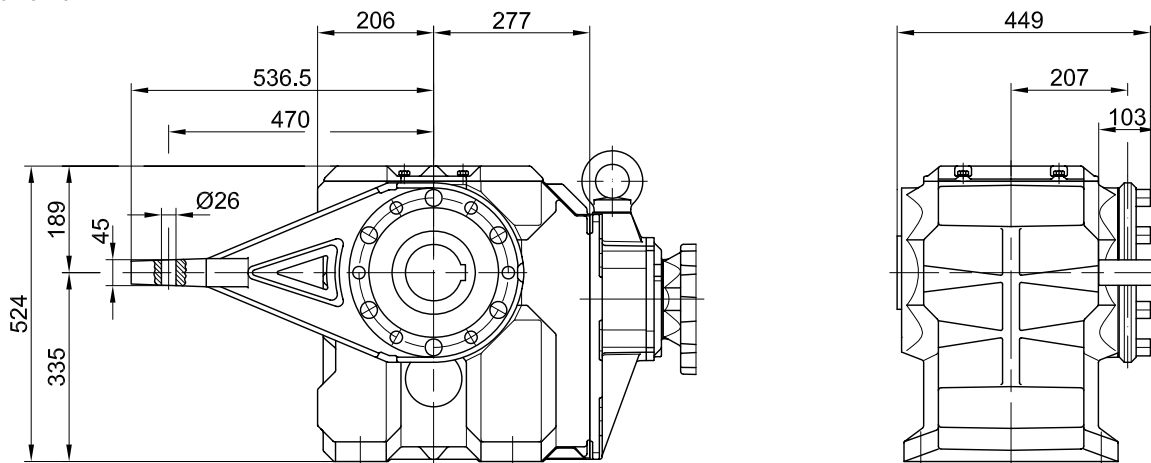
Typ/ Type/ Type	a	b	c	d	e	i	Ausführung mit Bremse/ with brake/ avec frein											
							i <sub>B</sub>	E008		Z008		Z015		E075				
								c <sub>B</sub>	d <sub>B</sub>	c <sub>B</sub>	d <sub>B</sub>	c <sub>B</sub>	d <sub>B</sub>	c <sub>B</sub>	d <sub>B</sub>			
BK80G40-../D08..	200	373	156	1056	47	115	115	166	1131									
BK80B40-../D09..	251	387.5	181	1121	47	124	124	192	1201	192	1215	192	1221					
BK80B40-../D11..	319	394	228	1196	47	181	181					231	1299	231	1329			

Drehmomentstütze vorne/ torque arm at front/ bras de réaction à l'avant

**Code -5.V/**

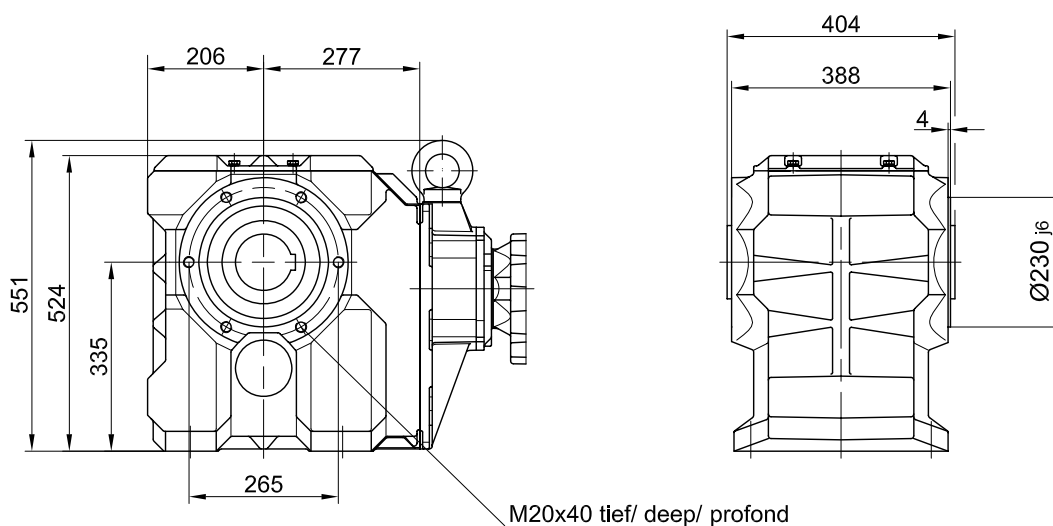
BK80G40

Stand: 30.11.2006 / mk



Flansch mit Gewindelöchern vorne/ flange with tapped holes at front/ bride avec trous taraudés à l'avant

**Code -7.V/**



Fuss mit Durchgangslöchern unten/ foot with clearance holes at bottom/ fixation à pied avec trous débouchants en bas

**Code -1.U/**

