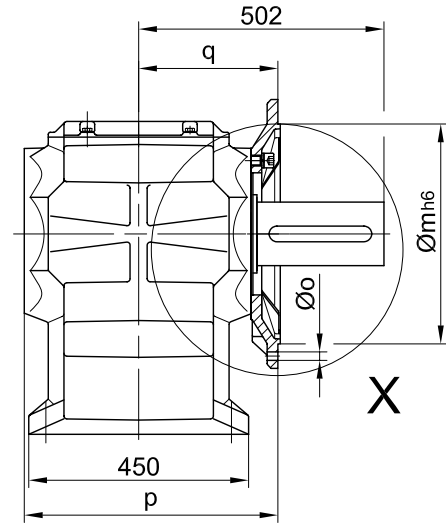
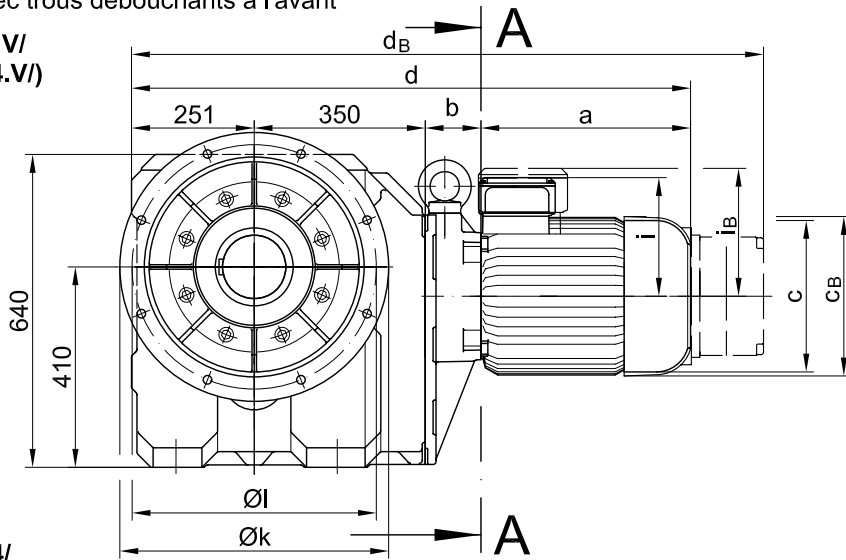
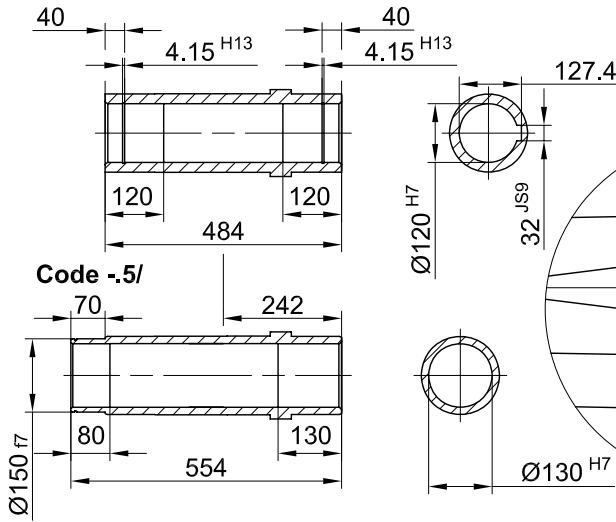


Flansch mit Durchgangslöchern vorne/ flange with clearance holes at front/  
 bride avec trous débouchants à l'avant

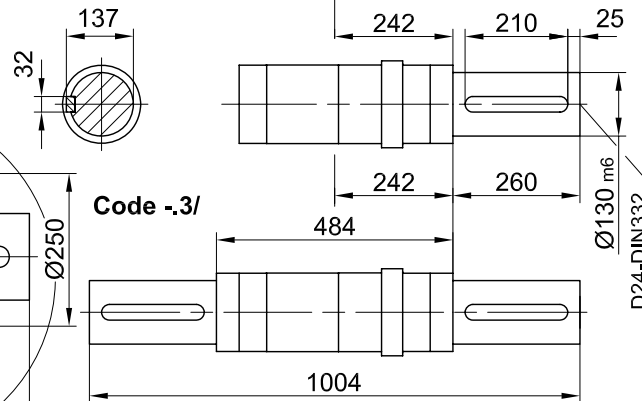
Code -3.V/  
 (Code -4.V/)



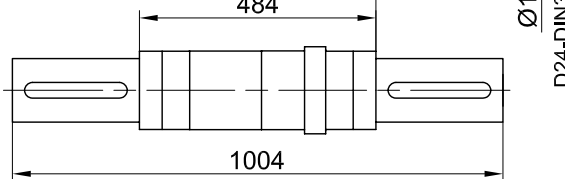
Code -4/  
 40



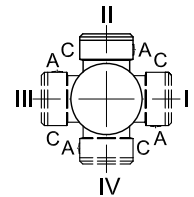
Code -1/  
 137



Code -3/  
 484



Standard



A-A

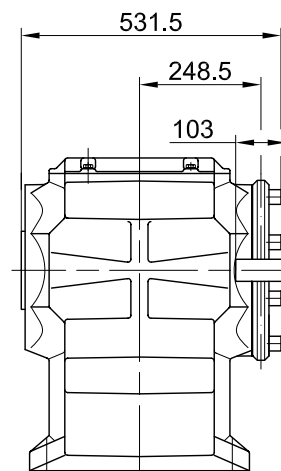
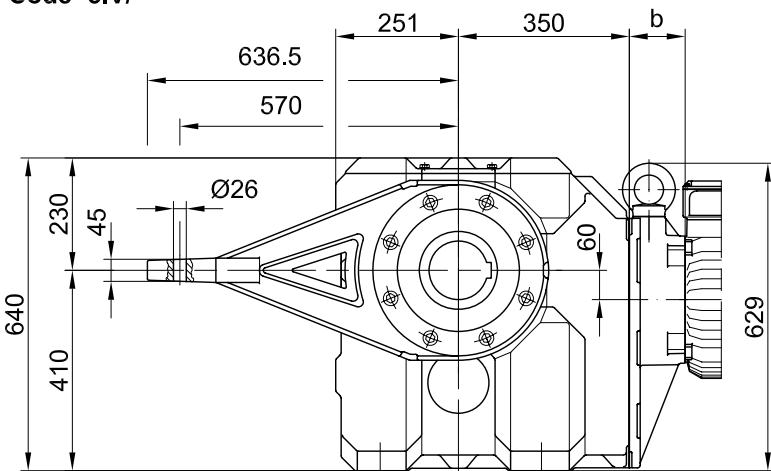
Flanschmasse/ Flange dimensions/ cotes de la bride

BK90(Z)	k	l	m	n	o	p	q	s	t
Standard/ -3.V/	550	500	450	22	17.5	519	285	5	217
gross/ big/ grande -4.V/	660	600	550	25	22	513	279	6	223

Typ/ Type/ Type	a	b	c	d	i	i <sub>B</sub>	Ausführung mit Bremse/ with brake/ avec frein									
							E008		Z008		Z015		E075			
							c <sub>B</sub>	d <sub>B</sub>	c <sub>B</sub>	d <sub>B</sub>	c <sub>B</sub>	d <sub>B</sub>	c <sub>B</sub>	d <sub>B</sub>		
BK90Z-../D09..	251	267	181	1119	124	124	192	1198	192	1212	192	1218				
BK90Z-../D11..	319	273.5	228	1194	181	181					231	1296	231	1326		
Typ/ Type/ Type	a	b	c	d	i	i <sub>B</sub>	E075		Z075		Z100		E500			
							c <sub>B</sub>	d <sub>B</sub>	c <sub>B</sub>	d <sub>B</sub>	c <sub>B</sub>	d <sub>B</sub>	c <sub>B</sub>	d <sub>B</sub>		
							BK90-../D13..	393	100	266	1094	217	217	277	1229	277
BK90Z-../D13..	393	286.5	266	1281	217	217	277	1415	277	1435						
BK90-../D16..	429	114	322	1144	243	243	326	1178	326	1296	326	1316				
BK90Z-../D16..	429	300.5	322	1331	243	243	326	1463	326	1483	326	1502				
BK90-../D18..	528	136	368	1265	288	288					366	1445	366	1426		
BK90Z-../D18..	528	322.5	368	1451	288	288					366	1632	366	1622		
BK90-../C-DNF22S	612	281	390	1494	314											
BK90-../C-DNF22M	652	281	390	1534	314											

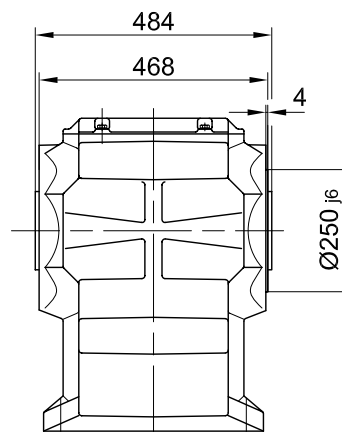
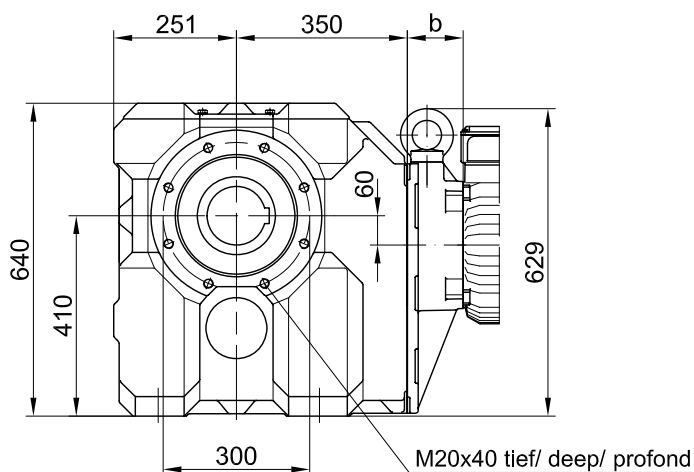
Drehmomentstütze vorne/ torque arm at front/ bras de réaction à l'avant

**Code -5.V/**



Flansch mit Gewindelöchern vorne/ flange with tapped holes at front/ bride avec trous taraudés à l'avant

**Code -7.V/**



Fuss mit Durchgangslöchern unten/ foot with clearance holes at bottom/ fixation à pied avec trous débouchants en bas

**Code -1.U/**

