

Flansch mit Gewindelöchern vorne/ flange with tapped holes at front/ bride avec trous taraudés à l'avant

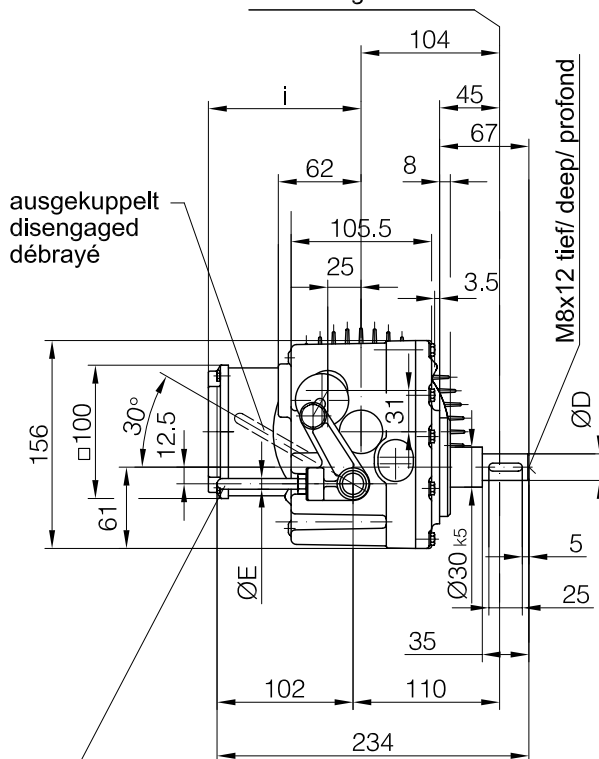
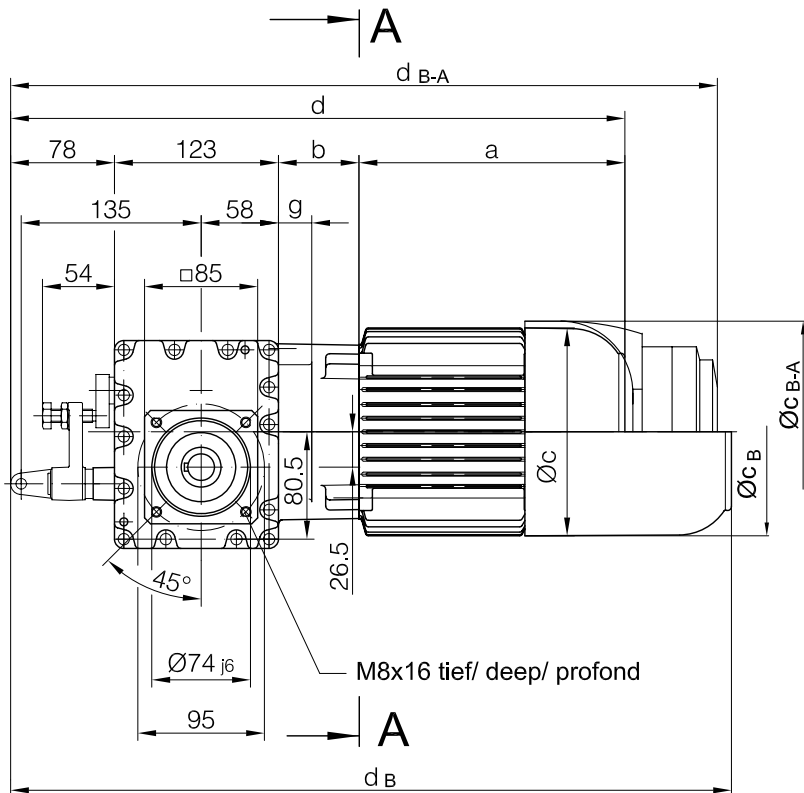
BM09-BM09X

Nachfolgetyp von SZ2-V3209/ follow-up type of SZ2-V3209/ Successeur du type SZ2-V3209

Stand: 30.11.2006 / mk

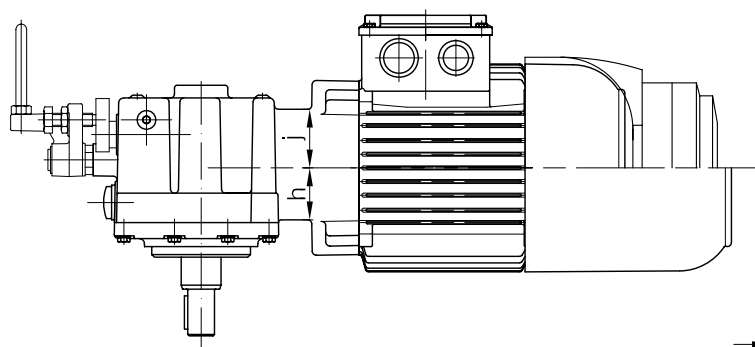
Code -7.V/

Mitte Laufrad
 Mid of wheel drive
 Milieu de galet

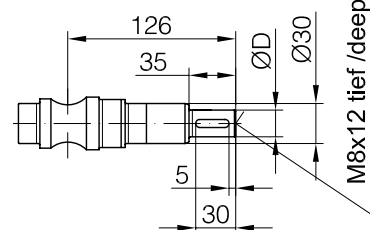


ausgekuppelt
 disengaged
 débrayé

eingekuppelt
 engaged
 embrayé



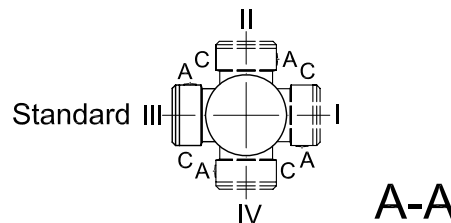
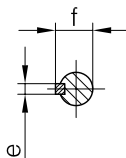
Code -1/



Typ/ Wellen Ø D/ Kupplungshebel Ø E

Type/ Shaft Ø D/ Clutch lever Ø E

Type/ Diamètre d'arbre/ Levier de embrayage Ø E



Typ/ Type/ Type	Ø D	e	f	Kupplungshebel Ø Clutch lever Ø Levier de embrayage Ø	Ø E	
BM09-../ D...	20 _{k6}	6	22.5		8mm	Standard
BM09X-../ D...	25 _{k6}	8	28		10mm	Verstärkte Ausführung/ Reinforced Version/ Exécution Renforcée

Typ/ Type/	a	b	c	d	g	h	i	j	Ausführung mit Bremse/ with brake/ avec frein											
									E003		E004		E008							
									c _B	d _B	c _B	d _B	c _B	d _B						
BM09(X)-../D05..	170	14	123	386	-	-	100	-	123	428										
BM09(X)-../D06..	170	14	123	386	-	-	100	-	123	428										
BM09(X)-../D07..	190	14	123	406	-	-	100	-	123	448	123	448								
BM09(X)-../D08..	200	60.5	156	461	25	39	115	44					166	536						

