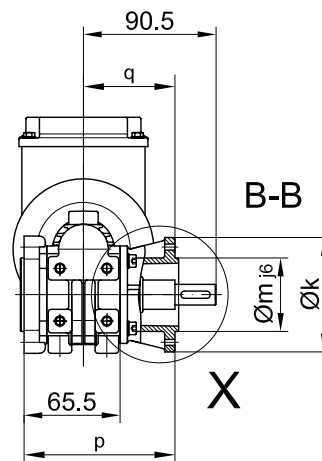
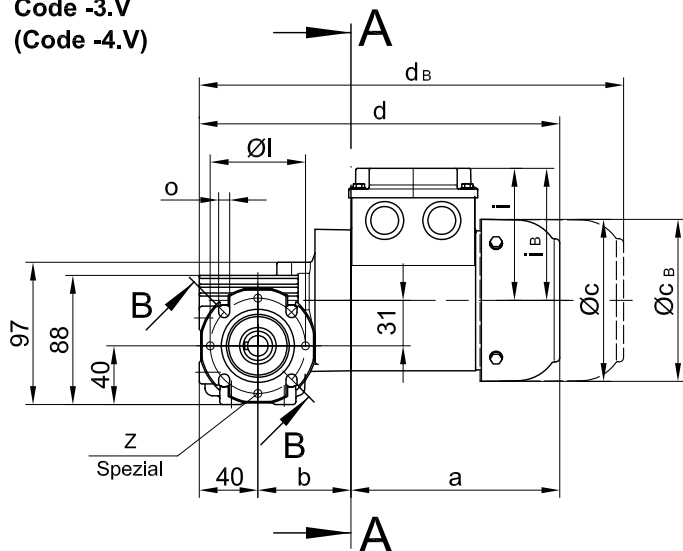
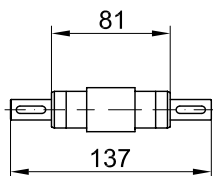


Flansch mit Durchgangslöchern vorne/ flange with clearance holes at front/  
 bride avec trous débouchants à l'avant

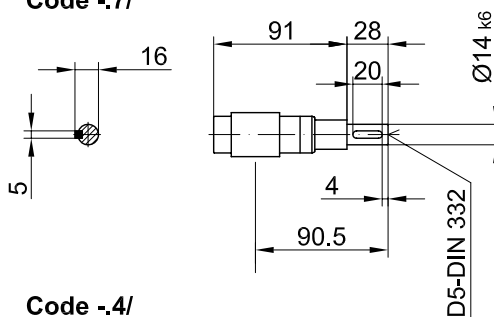
Code -3.V  
 (Code -4.V)



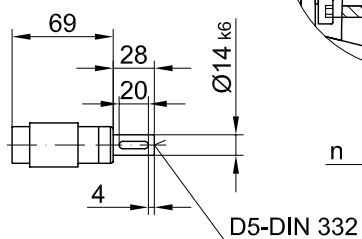
Code -3/



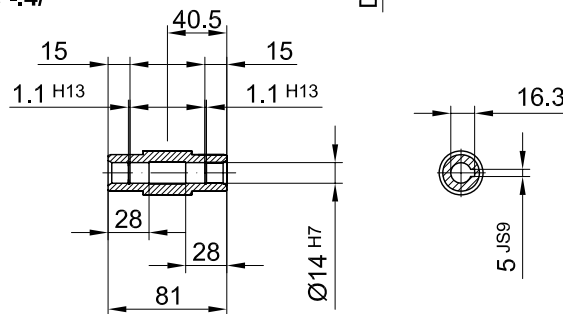
Code -7/



Code -1/

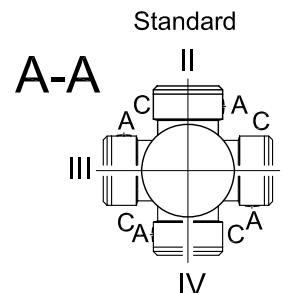


Code -4/



Flanschmasse/ Flange dimensions/ cotes de la bride

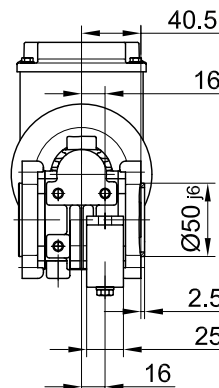
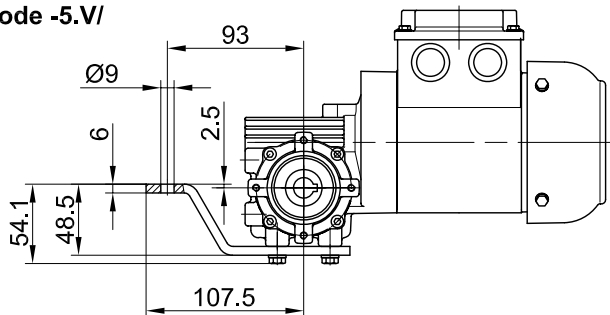
BS02	k	l	m	n	o	p	q	s	t	z
Standard/ -37V/	80	65	50	7	5.5	103	62.5	2.5	28	-
Spezial/ -37V/	80	65	50	7	5.5	103	62.5	2.5	28	4xM5
gross/ big/ grande -47V/	110	80	60	8	6.6	103	62.5	2.5	28	-
Spezial/ -47V/	110	80	60	8	6.6	103	62.5	2.5	28	4xM6



Typ / Type / Type	a	b	c	d	u	i	Ausführung mit Bremse/ with brake/ avec frein							
							i <sub>B</sub>	E003		E004				
								c <sub>B</sub>	d <sub>B</sub>	c <sub>B</sub>				d <sub>B</sub>
BS02-../D04..	143	63.5	111	246	178	90	90	111	290					
BS02-../D05..	170	65.5	123	274	188	100	100	123	316					
BS02-../D06..	170	65.5	123	274	188	100	100	123	316					
BS02-../D07..	190	65.5	123	294	188	100	100	123	336	123	336			

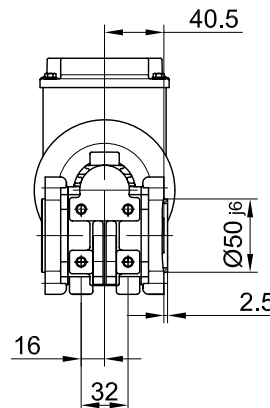
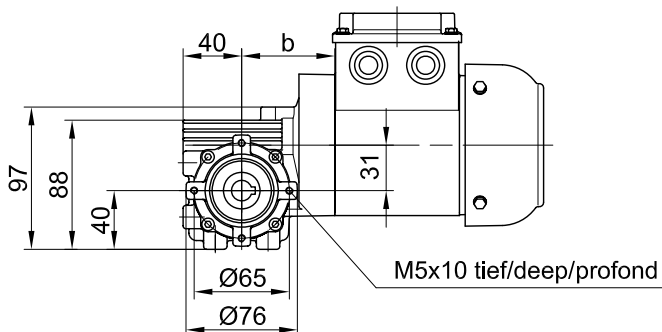
Drehmomentstütze vorne/ torque arm at front/ bras de réaction à l'avant

Code -5.V/



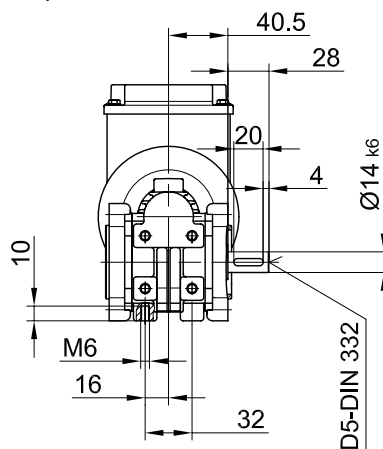
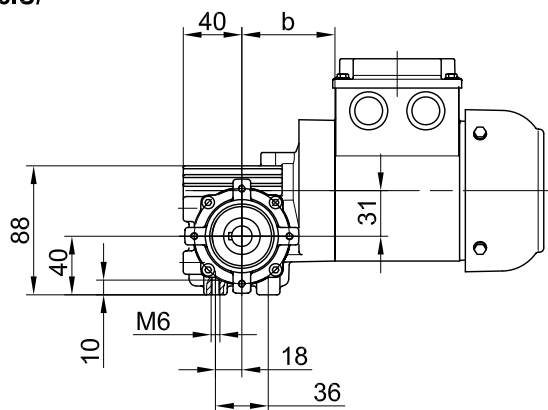
Flansch mit Gewindelöchern vorne/ flange with tapped holes at front/ bride avec trous taraudés à l'avant

Code -7.V/



Fuss mit Gewindelöchern unten/ foot with tapped holes at bottom/ fixation à pied avec trous taraudés en bas

Code -6.U/



Fuss mit Durchgangslöchern unten/ foot with clearance holes at bottom/ fixation à pied avec trous débouchants en bas

Code -1.U/

