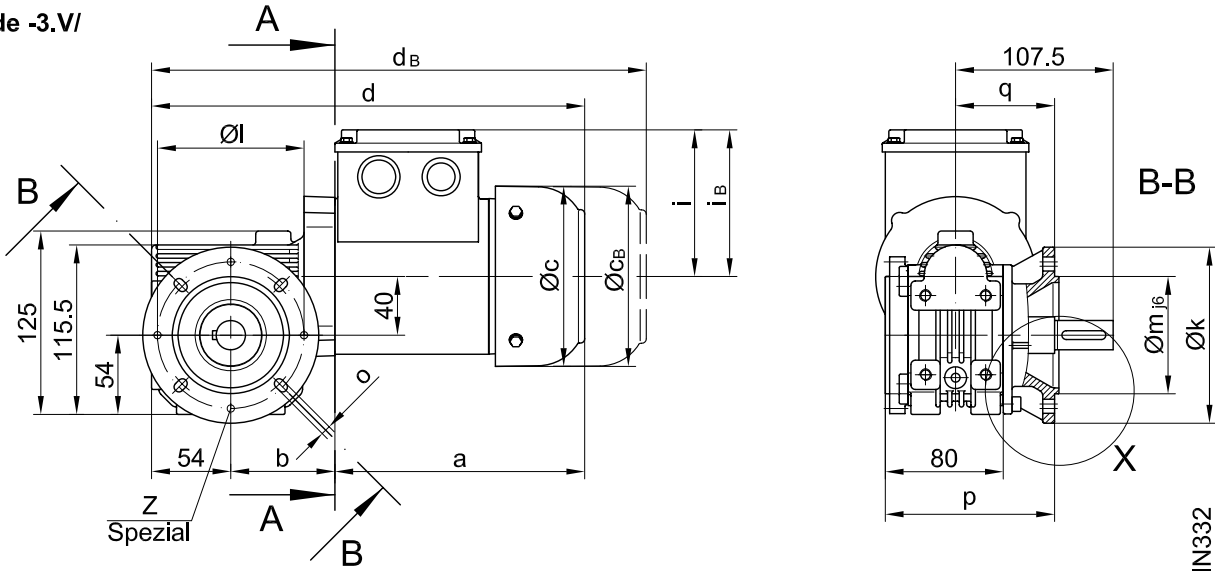
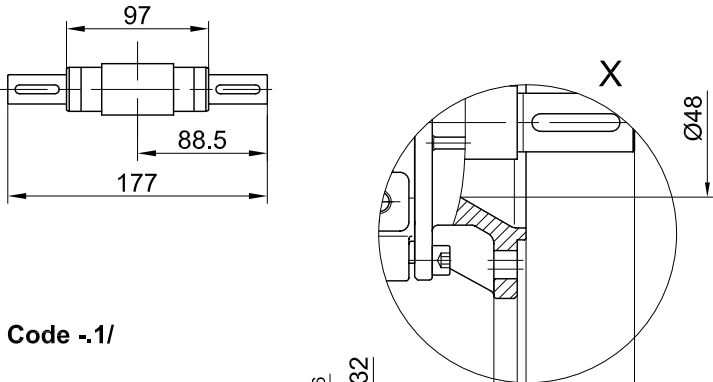


Flansch mit Durchgangslöchern vorne/ flange with clearance holes at front/
 bride avec trous débouchants à l'avant

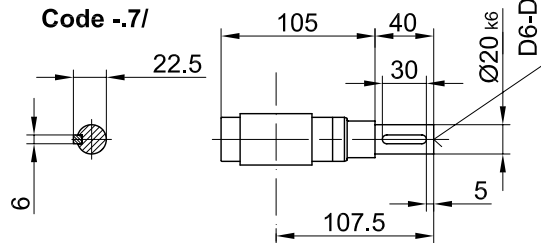
Code -3.V/



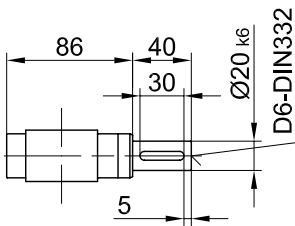
Code -3./



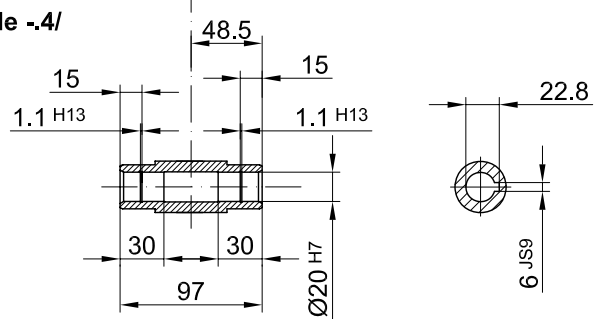
Code -7./



Code -1/

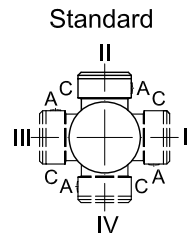


Code -4/



Flanschmasse/ Flange dimensions/ cotes de la bride

BS03	k	l	m	n	o	p	q	s	t	z
Standard/ -37V/	120	100	80	8	6.6	115	67.5	3	40	-
Spezial/ -37V/	120	100	80	8	6.6	115	67.5	3	40	4xM6

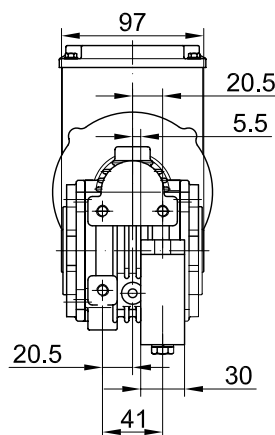
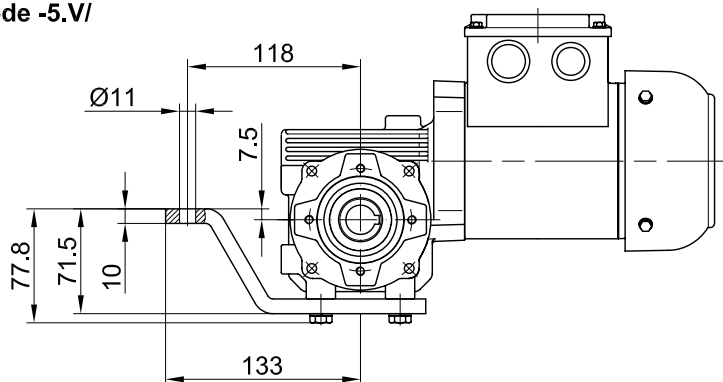


A-A

Typ/ Type/	a	b	c	d	u	v	i	Ausführung mit Bremse/ with brake/ avec frein						
								i _B	E003		E004		E008	
									c _B	d _B	c _B	d _B	c _B	d _B
BS03-../D05..	170	71	123	296	213	70	100	100	123	338				
BS03-../D06..	170	71	123	296	213	70	100	100	123	338				
BS03-../D07..	190	71	123	316	213	70	100	100	123	358	123	358		
BS03-../D08..	200	115	156	369	228	-	115	115					166	444

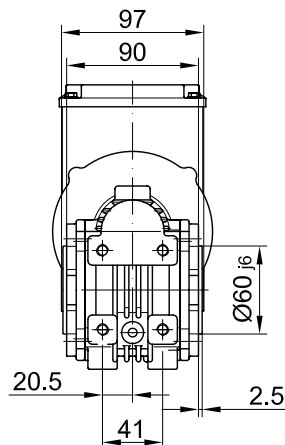
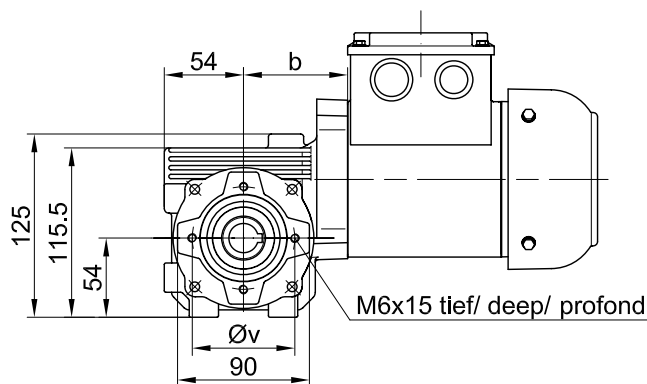
Drehmomentstütze vorne/ torque arm at front/ bras de réaction à l'avant

Code -5.V/



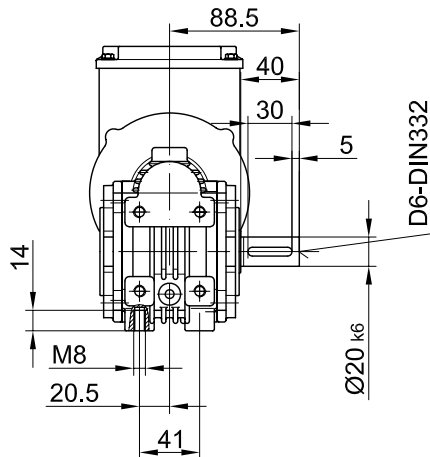
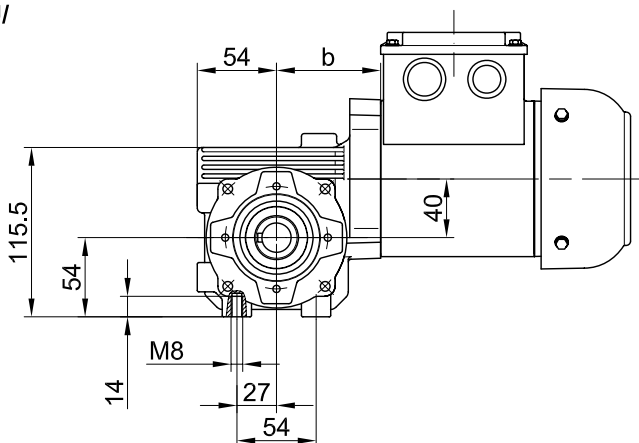
Flansch mit Gewindelöchern vorne/ flange with tapped holes at front/ bride avec trous taraudés à l'avant

Code -7.V/



Fuss mit Gewindelöchern unten/ foot with tapped holes at bottom/ fixation à pied avec trous taraudés en bas

Code -6.U/



Fuss mit Durchgangslöchern unten/ foot with clearance holes at bottom/ fixation à pied avec trous débouchants en bas

Code -1.U/

