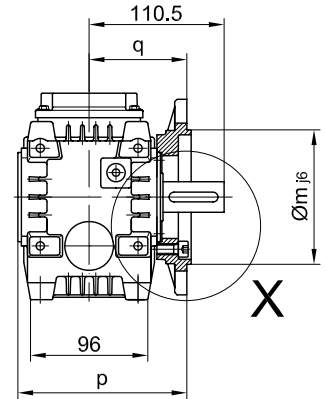
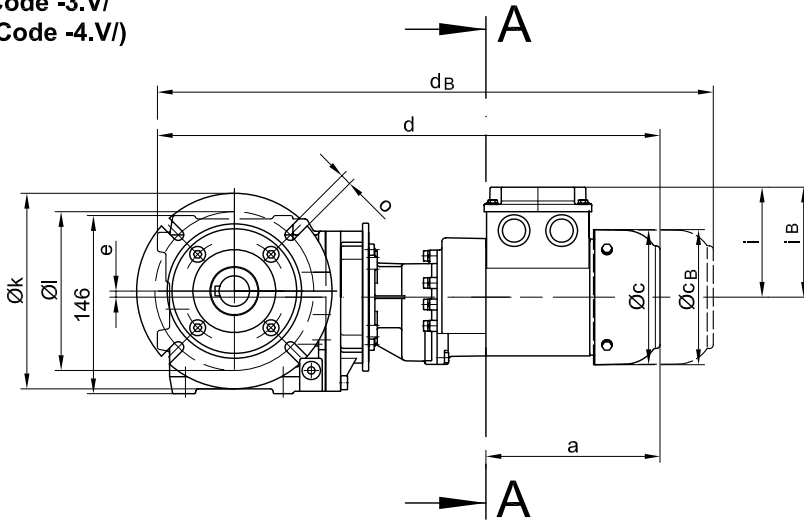
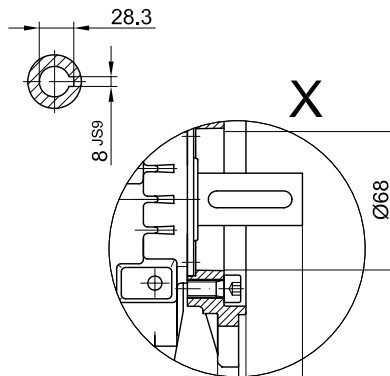
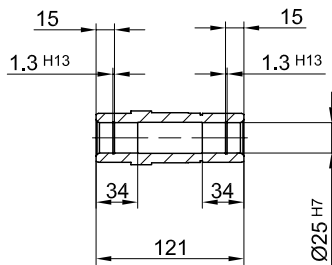


Flansch mit Durchgangslöchern vorne/ flange with clearance holes at front/
 bride avec trous débouchants à l'avant

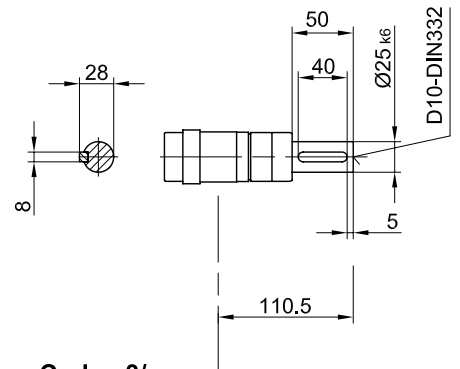
Code -3.V/
 (Code -4.V/)



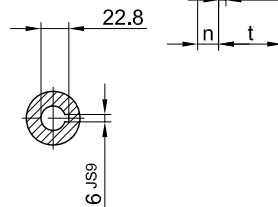
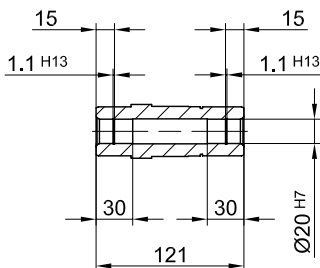
Code -4/
 Standard



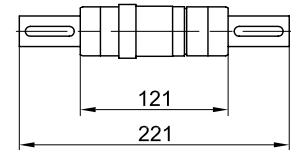
Code -1/



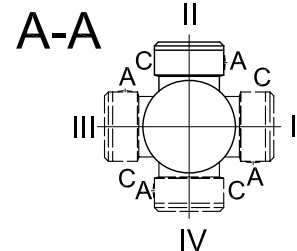
Code -4/K20



Code -3/



Standard



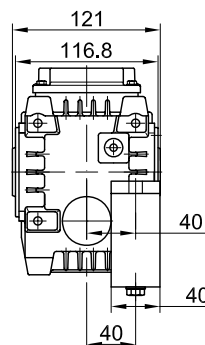
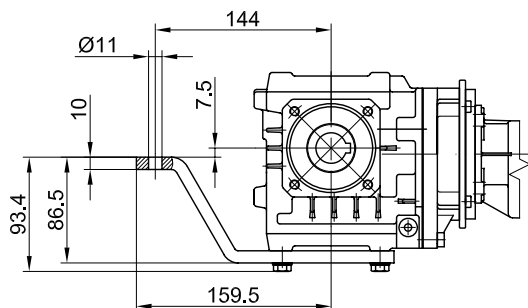
Flanschmasse/ Flange dimensions/ cotes de la bride

BS06	k	l	m	n	o	p	q	s	t
Standard/ -3./	140	115	95	10	9	138.5	80	3	30.5
gross/ big/ grande -4./	160	130	110	10	9	138.5	80	3.5	30.5

Typ/ Type/ Type	a	b	c	d	e	i	Ausführung mit Bremse/ with brake/ avec frein								
							i _B	E003							
								c _B	d _B						
BS06G04-../D04..	143	131	111	412	5	90	90	111	455						

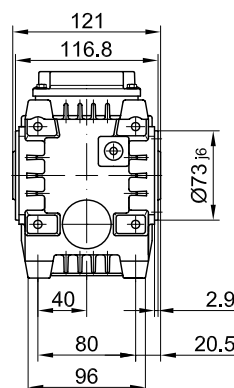
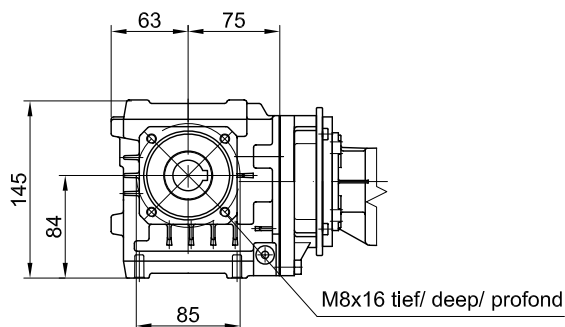
Drehmomentstütze vorne/ torque arm at front/ bras de réaction à l'avant

Code -5.V/



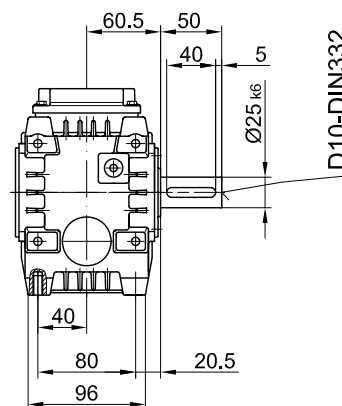
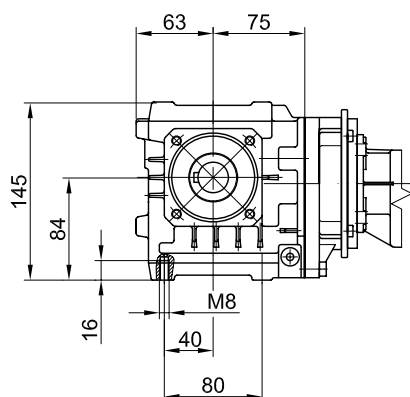
Flansch mit Gewindelöchern vorne/ flange with tapped holes at front/ bride avec trous taraudés à l'avant

Code -7.V/



Fuss mit Gewindelöchern unten/ foot with tapped holes at bottom/ fixation à pied avec trous taraudés en bas

Code -6.U/



Fuss mit Durchgangslöchern unten/ foot with clearance holes at bottom/ fixation à pied avec trous débouchants en bas

Code -1.U/

