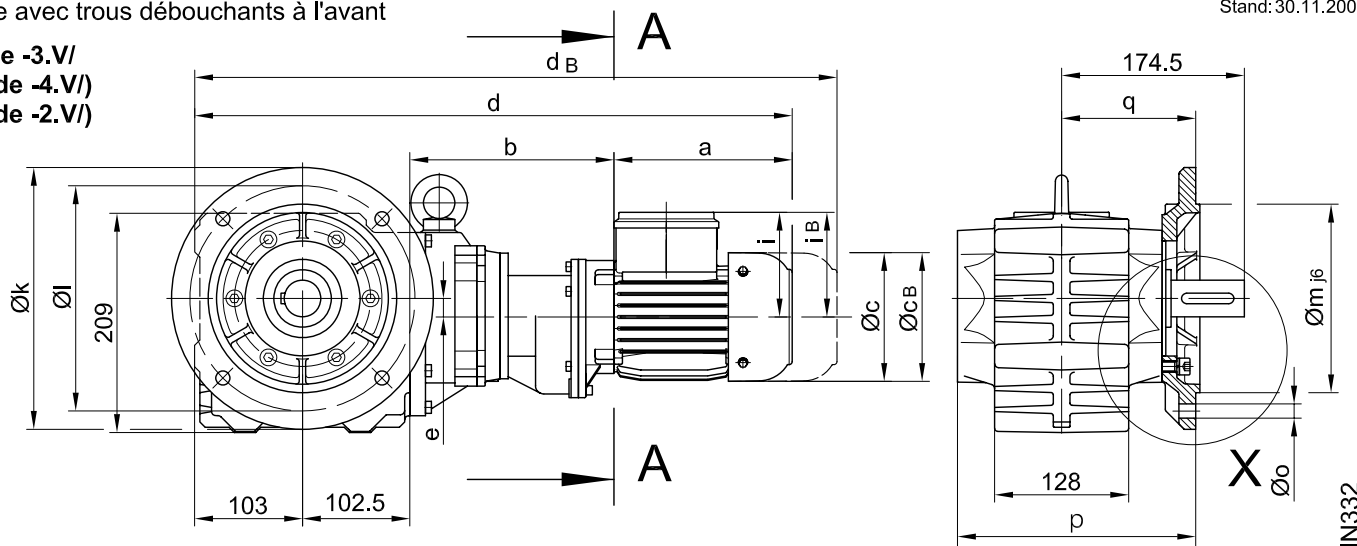
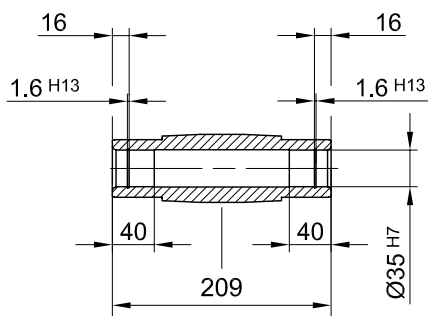


Flansch mit Durchgangslöchern vorne/ flange with clearance holes at front/
 bride avec trous débouchants à l'avant

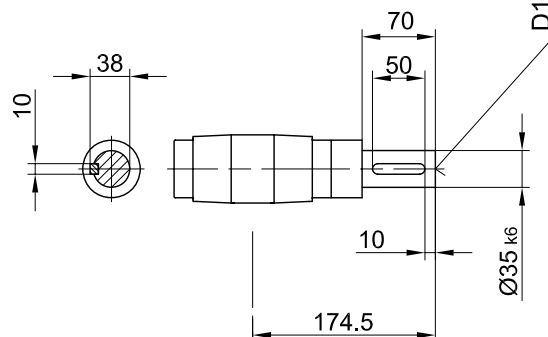
Code -3.V/
 (Code -4.V/)
 (Code -2.V/)



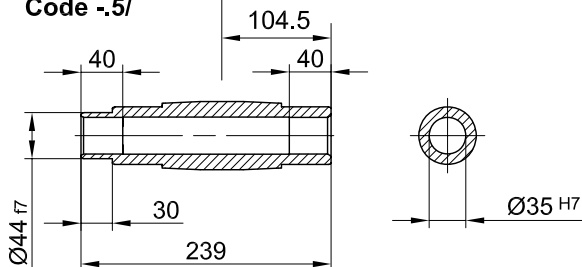
Code -4/



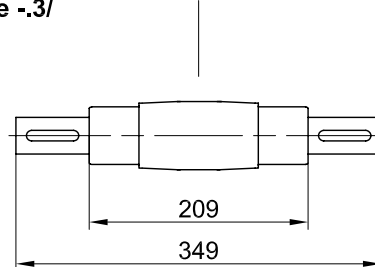
Code -1/



Code -5/

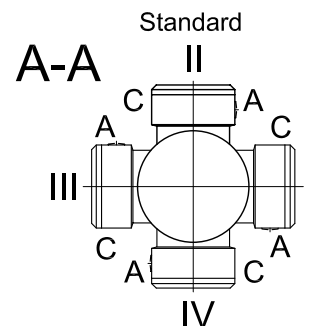


Code -3/



Flanschmasse/ Flange dimensions/ cotes de la bride

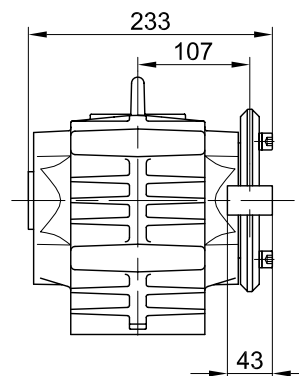
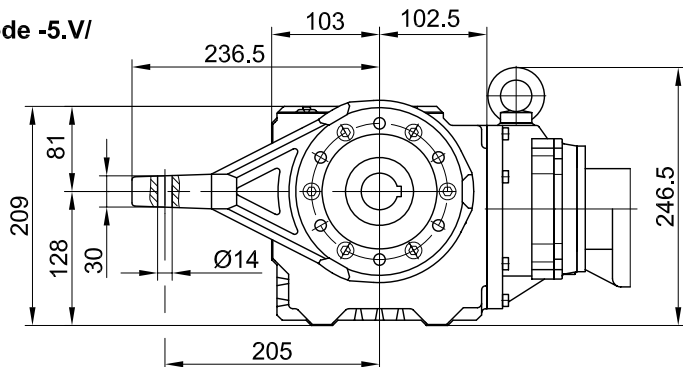
BS20G..	k	l	m	n	o	p	q	s	t
Standard/ -3.V/	250	215	180	16	13.5	227.5	128	4	46.5
klein/ small/ petite -2.V/	200	165	130	12	11	224.5	125	3.5	49.5
gross/ big/ grande -4.V/	300	265	230	20	13.5	233.5	134	4	40.5



Typ/ Type/ Type	a	b	c	d	e	i	Ausführung mit Bremse/ with brake/ avec frein									
							i _B	E003		E004		E008				
								c _B	d _B	c _B	d _B	c _B	d _B			
BS20G06-../D04..	143	193	111	541	18	90	90	111	585							
BS20G06-../D05..	170	195	123	571	18	100	100	123	613							
BS20G06-../D06..	170	195	123	571	18	100	100	123	613							
BS20G06-../D07..	190	195	123	591	18	100	100	123	633	123	633					
BS20G06-../D08..	200	239	156	644	18	115	115					166	719			

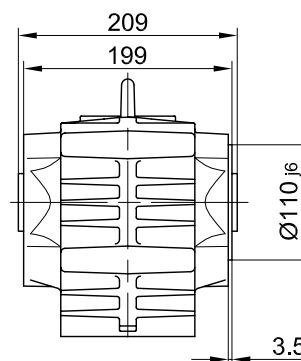
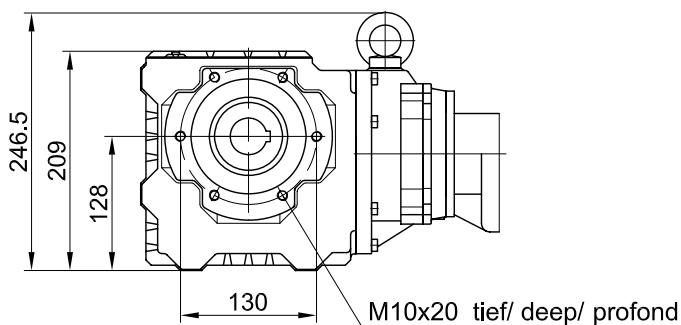
Drehmomentstütze vorne/ torque arm at front/

Code -5.V/



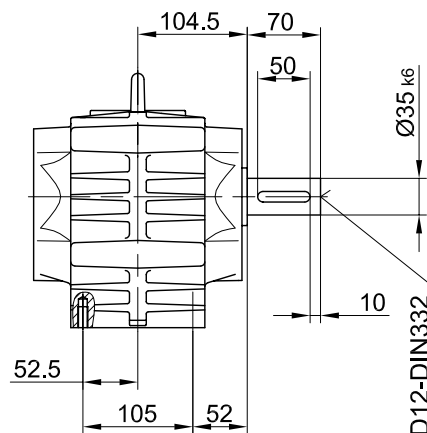
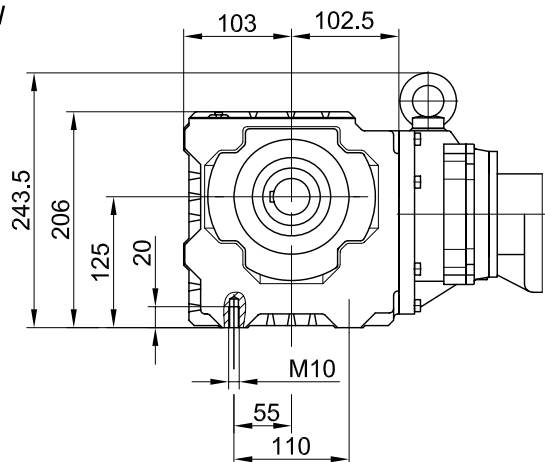
Flansch mit Gewindelöchern vorne/ flange with tapped holes at front/ bride avec trous taraudés à l'avant

Code -7.V/



Fuss mit Gewindelöchern unten/ foot with tapped holes at bottom/ fixation à pied avec trous taraudés en bas

Code -6.U/



Fuss mit Durchgangslöchern unten/ foot with clearance holes at bottom/ fixation à pied avec trous débouchants en bas

Code -1.U/

