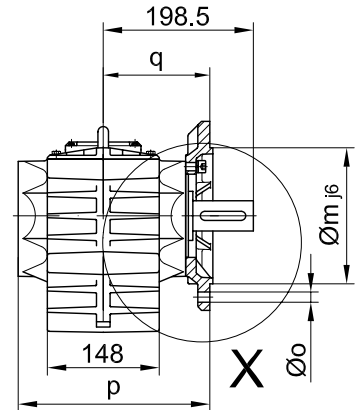
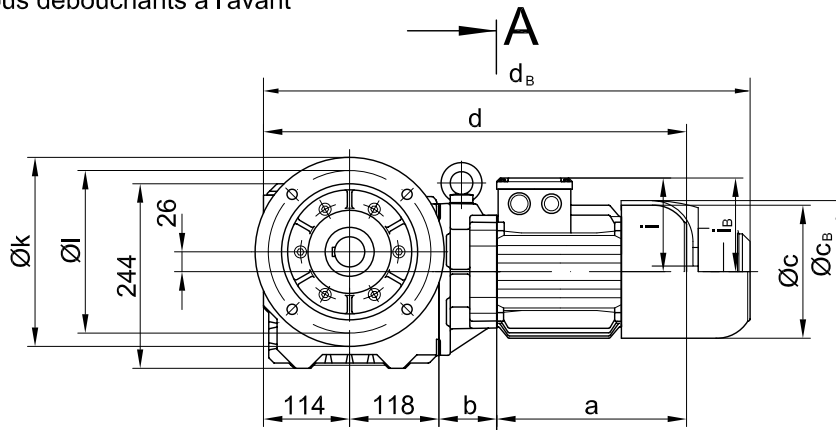
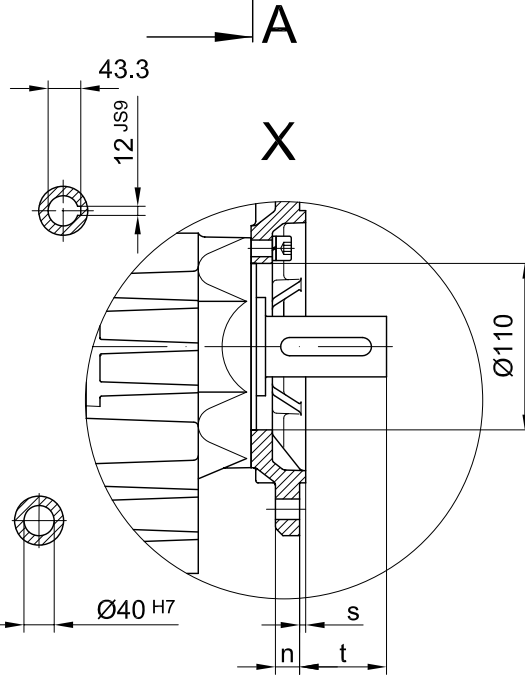
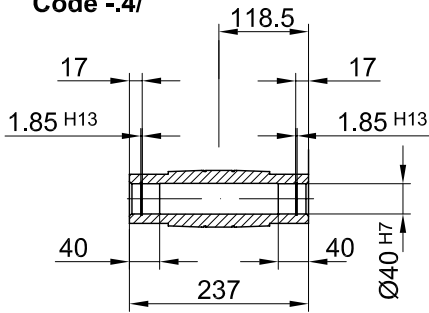


Flansch mit Durchgangslöchern vorne/ flange with clearance holes at front/
 bride avec trous débouchants à l'avant

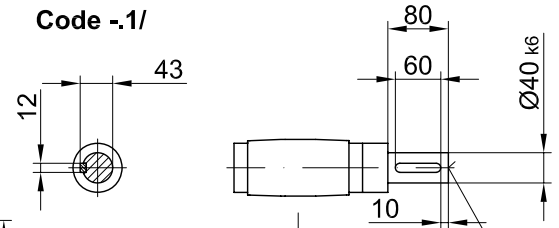
Code -3.V/
 (Code -4.V/)



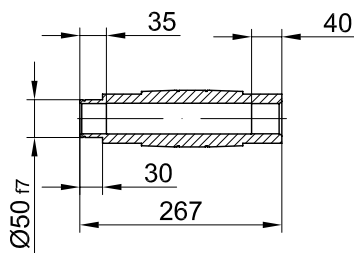
Code -4/



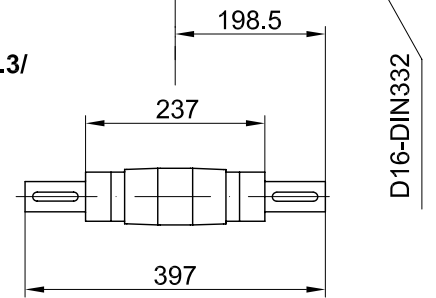
Code -1/



Code -5/

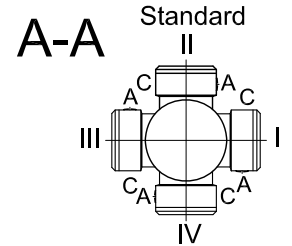


Code -3/



Flanschmasse/ Flange dimensions/ cotes de la bride

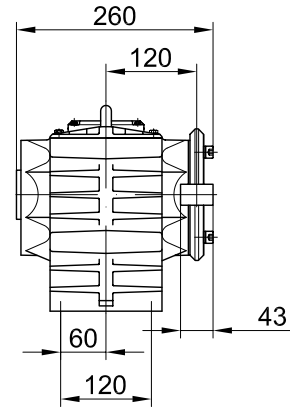
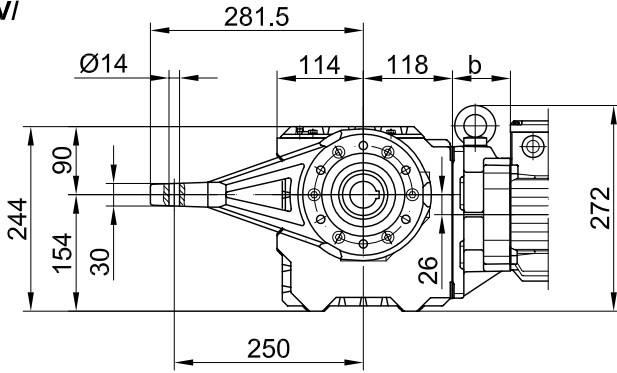
BS30(Z)	k	l	m	n	o	p	q	s	t
Standard/ -3.V/	250	215	180	16	13.5	253.5	141	4	57.5
gross/ big/ grande -4.V/	300	265	230	20	13.5	259.5	147	4	51.5



Typ/ Type/ Type	a	b	c	d	i	Ausführung mit Bremse/ with brake/ avec frein													
						i _B	E003		E004		E008		Z008		Z015		E075		
							c _B	d _B	c _B	d _B	c _B	d _B	c _B	d _B	c _B	d _B	c _B	d _B	
BS30-../D05..	170	58	123	461	100	100	123	503											
BS30Z-../D05..	170	133.5	123	536	100	100	123	578											
BS30-../D06..	170	58	123	461	100	100	123	503											
BS30Z-../D06..	170	133.5	123	536	100	100	123	578											
BS30-../D07..	190	58	123	481	100	100	123	523	123	523									
BS30Z-../D07..	190	133.5	123	556	100	100	123	598	123	598									
BS30-../D08..	200	62	156	494	115	115					166	568							
BS30Z-../D08..	200	137.5	156	570	115	115					166	644							
BS30-../D09..	251	77	181	560	124	124					192	639	192	653	192	659			
BS30Z-../D09..	251	152	181	635	124	124					192	714	192	728	192	734			
BS30-../D11..	319	83	228	634	181	181									231	736.5	231	766.5	

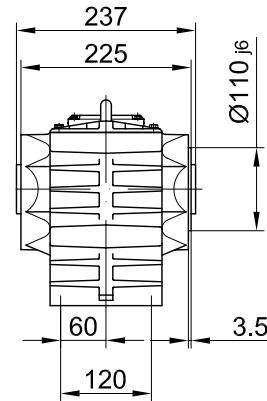
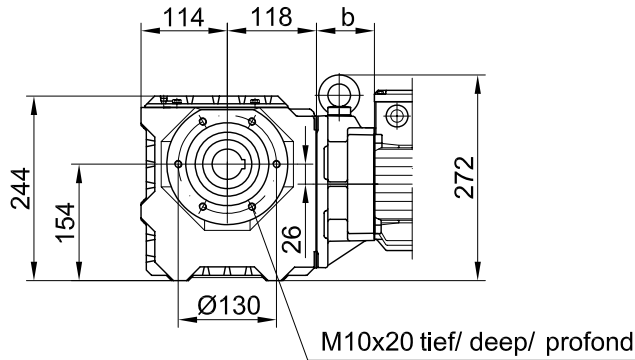
Drehmomentstütze vorne/ torque arm at front/ bras de réaction à l'avant

Code -5.V/



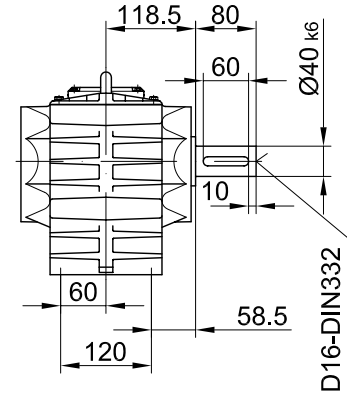
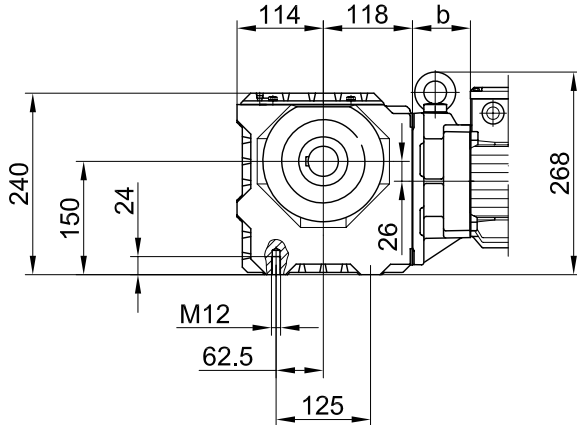
Flansch mit Gewindelöchern vorne/ flange with tapped holes at front/ bride avec trous taraudés à l'avant

Code -7.V/



Fuss mit Gewindelöchern unten/ foot with tapped holes at bottom/ fixation à pied avec trous taraudés en bas

Code -6.U/



Fuss mit Durchgangslöchern unten/ foot with clearance holes at bottom/ fixation à pied avec trous débouchants en bas

Code -1.U/

