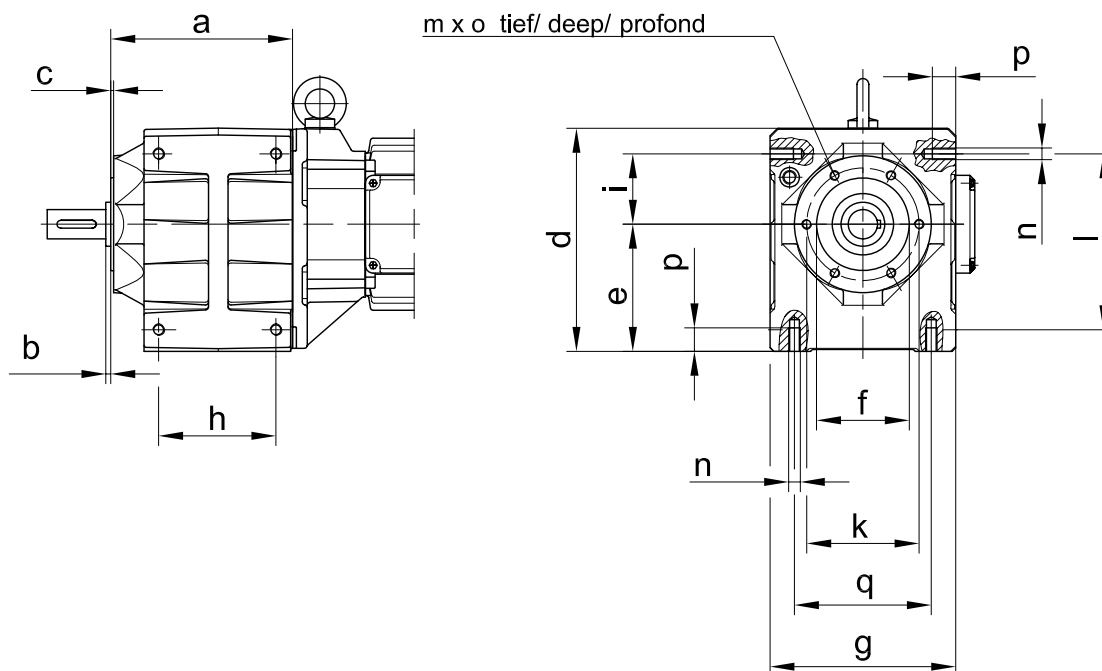


allseitig bearbeitet/ completely machined/ usiné complètement

Code -8./



Getriebegrösse Gear size Taille réducteur	a	b	c	d	e	Øf	g	h	i	Øk	l	m	n	o	p	q
BG10	144	5	2.5	150	90	60 _{j6}	126	90	43	75	120	M6	M8	12	16	85
BG20	154.5	2.5	3	180	100	80 _{j6}	140	95	60	100	145	M8	M8	16	16	105
BG30	175	5	3	204	115	80 _{j6}	160	110	66	100	163	M8	M10	16	18	115
BG40	191	5	3	229	130	95 _{j6}	190	120	72	115	180	M10	M12	20	24	140
BG50	220.5	5	3.5	276	155	110 _{j6}	230	140	84.5	130	210	M10	M14	20	28	150
BG60	265.5	6	3.5	345	200	130 _{j6}	280	180	101.5	165	260	M12	M16	24	32	180
BG70	283.5	6	3.5	386	230	150 _{j6}	400	-	-	180	-	M12	-	24	-	-
BG80	321	7	4	470	290	180 _{j6}	480	-	-	215	-	M16	-	32	-	-
BG90	396	8	4	553	350	230 _{j6}	540	-	-	265	-	M20	-	40	-	-
BG100	516	8	5	565	340	250 _{h6}	630	-	-	300	-	M20	-	40	-	-