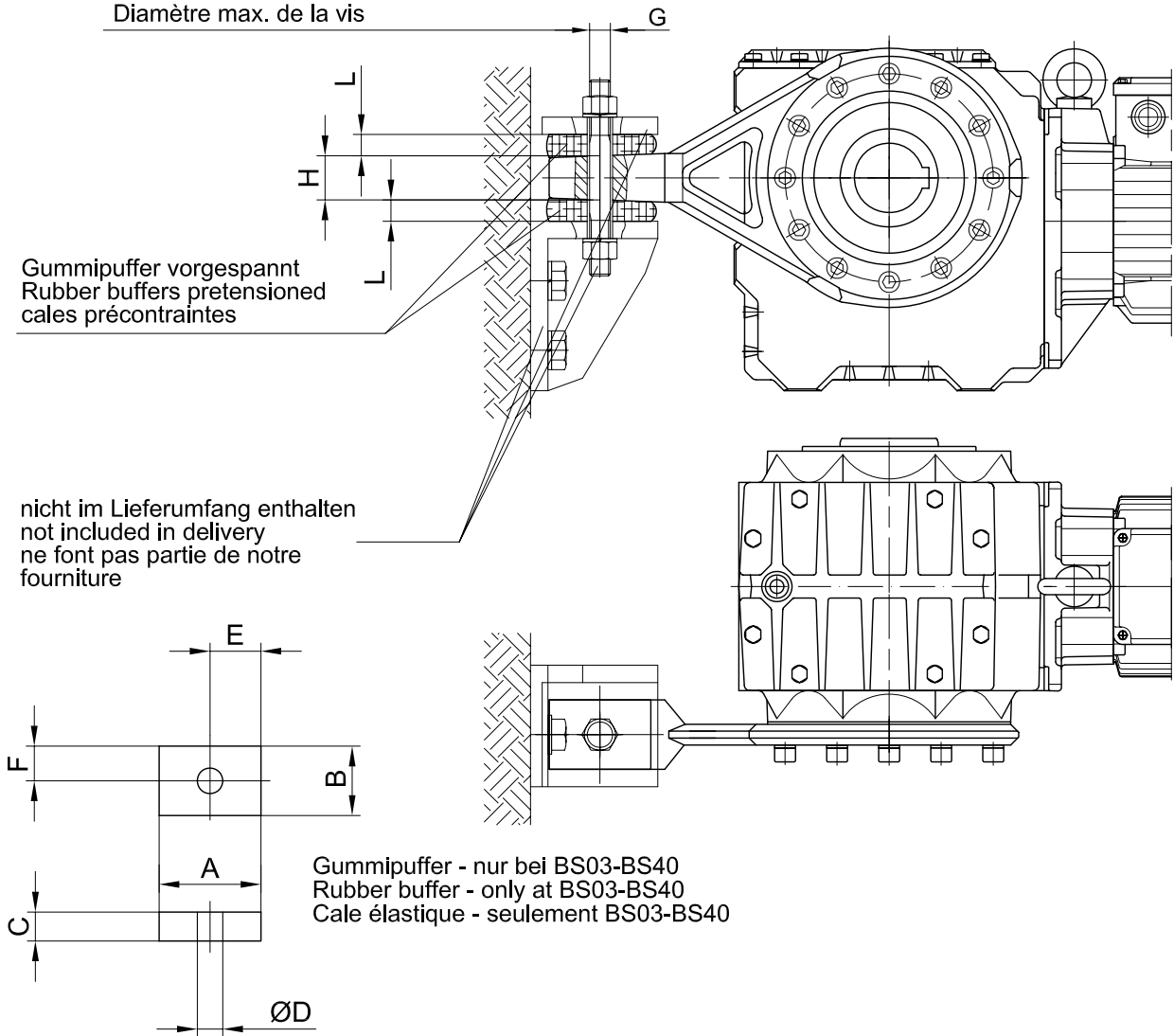


maximaler Schraubendurchmesser
 max. screw diameter
 Diamètre max. de la vis

Gummipuffer vorgespannt
 Rubber buffers pretensioned
 cales précontraintes

nicht im Lieferumfang enthalten
 not included in delivery
 ne font pas partie de notre
 fourniture



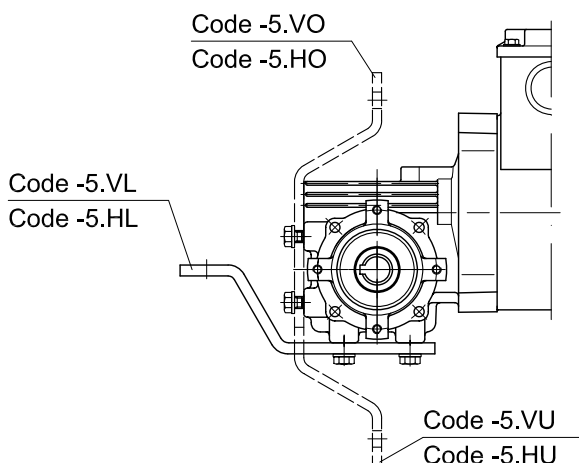
Gummipuffer - nur bei BS03-BS40
 Rubber buffer - only at BS03-BS40
 Cale élastique - seulement BS03-BS40

Werkstoff: Naturkautschuk
 Härte 50 ±5 Shore A
 Material: Natural rubber
 Hardness 50 ±5 Shore A
 Matière: Caoutchouc naturel
 Dureté 50 ±5 Shore A

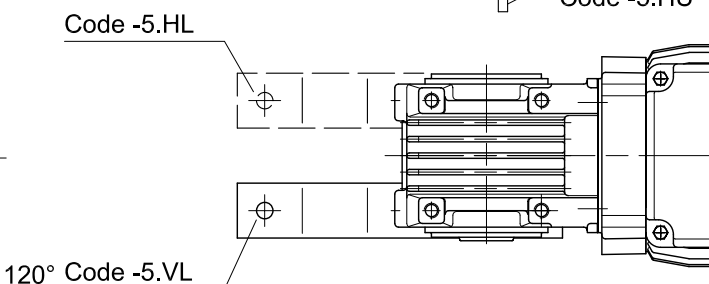
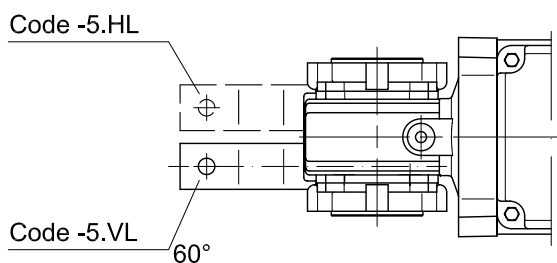
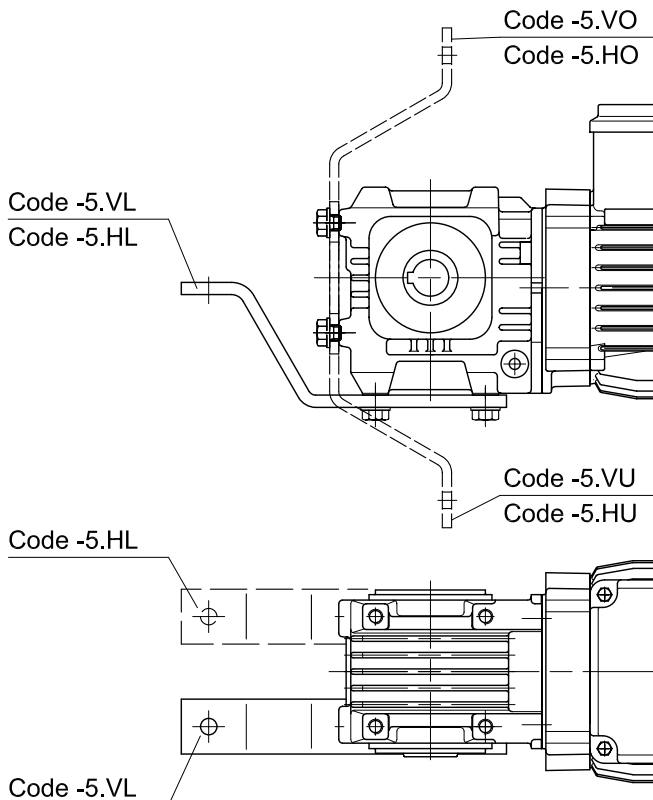
Abmessungen des Querlochs:
 Siehe Maßbild des jeweiligen Getriebes
 Dimensions of the transverse hole:
 see dimensioned sketch of the respective
 shaft mounted gearbox
 Dimensions du trou transversal
 consulter les croquis cotés
 des réducteurs respectifs

Getriebe Gear Réducteur	Pos.	Maße (mm) Dimensions (mm) Dimensions (mm)								
		A	B	C	D	E	F	G	H	L
BS02	-	-	-	-	-	-	-	M8	6	-
BS03	Pos.0	30	30	12	12	15	15	M8	10	10.5
BS04	Pos.0	30	30	12	12	15	15	M8	10	10.5
BS06	Pos.0	30	30	12	12	15	15	M10	10	10
BS10	Pos.1	48	32	15	14	24	16	M10	19	13
BS20	Pos.2	63	43	20	14	31.5	21.5	M10	30	17.5
BS30	Pos.2	63	43	20	14	31.5	21.5	M10	30	17
BS40	Pos.3	88	60	25	22	44	30	M18	38	22

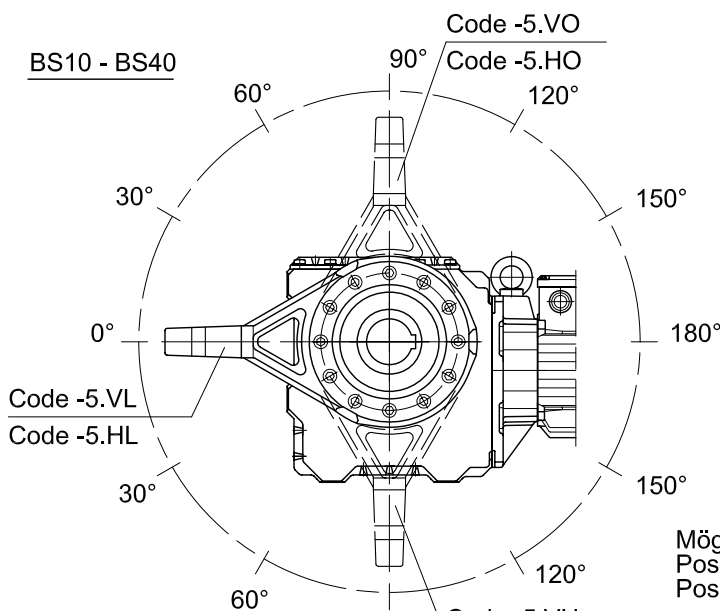
BS02 / BS03



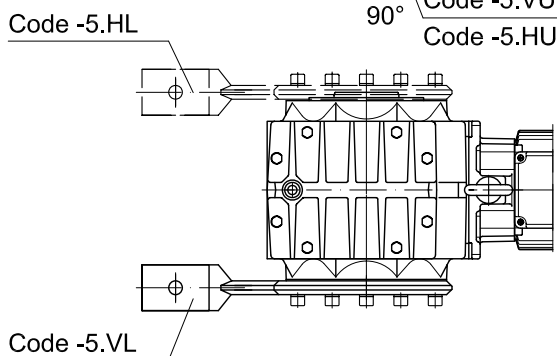
BS04 / BS06



BS10 - BS40



Mögliche Lagen.
 Possible locations.
 Positions possibles



Lage Position	VL / HL		VO / HO VU / HU				VR / HR
	0°	30°	60°	90°	120°	150°	
BS10	0°	30°	60°	90°	120°	150°	-
BS20	0°	30°	60°	90°	120°	150°	-
BS30	0°	30°	60°	90°	120°	150°	-
BS40	0°	30°	60°	90°	120°	150°	-