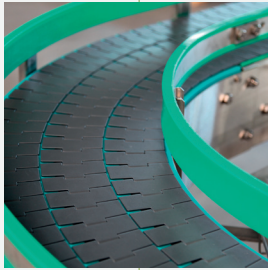


# Product Overview Bauer Geared Motors



 **Bauer**<sup>®</sup>  
Gear Motor

An Altra Industrial Motion Company

### Helical-Geared Motor Series BG



Compact and economical inline helical-geared motors designed to do practically without service.

- Motor power from 0.03 kW to 75 kW
- 13 gearbox sizes for torques from 20 Nm to 18500 Nm
- New attachment possibilities with low design height
- High efficiency through 2 stage base design
- Enclosure IP 65 as standard
- Service friendly built-on brake

### Shaft-Mounted Geared Motor Series BF



Shaft-mounted geared motors with integrated torque arm are easily integrated and economically applied.

- Gearbox housing with integral torque arm
- Motor power from 0.03 kW to 75 kW
- 10 gearbox sizes for torques from 90 Nm to 18500 Nm
- High efficiency through 2 stage base design
- Enclosure IP 65 as standard
- Service friendly built-on brake

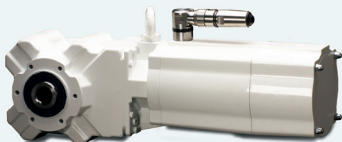
### Bevel-Geared Motor Series BK



Power-dense, right-angle, bevel-geared motors ensure the highest efficiency especially when used with frequency inverters.

- The right angle gearbox with universal attachment possibilities
- Motor power from 0.03 kW to 75 kW
- 10 gearbox sizes for torques from 80 Nm to 18500 Nm
- High efficiency through 2 stage base design
- Enclosure IP 65 as standard
- Service friendly built-on brake

### AsepticDrive™



Geared motors for the food & beverage industry as well as for all applications with high cleaning intensity or ambient conditions such as dust, fluff etc.

- Motor without fan and cooling fins
- Motor power  
DA08 0.25 kW - 0.55 kW  
DA09 0.37 kW - 1.5 kW  
DA11 1.1 kW - 2.2 kW
- Available with helical, parallel shaft, bevel and worm gears
- Motor winding in Iso Class F with thermistors as standard
- Enclosure IP 67 and IP 69K with acid and alkali resistant coating as standard
- Motor connection through standard stainless steel plug connector

### CleanDrive™



Geared motors for the Food & Beverage industry in enclosure IP 66 with acid and alkali resistant coating as standard.

- Motor without fan and cooling fins
- Motor power 0.12 kW
- Motor winding in Iso Class F with thermistors as standard
- Motor connection through standard terminal box or stainless steel cable gland

### CleanConnect®



Specially developed for the requirements of the beverage industry: Enclosure IP 67, gold coated contacts and smooth surface for a reliable current and signal transmission in wet environments.

- Cleaning friendly and detergent resistive surface
- Standardised M25 threaded connection
- Connectable without tools, coded for foolproof connection
- EMC conform due to shielding connection
- Available with straight or angular connection

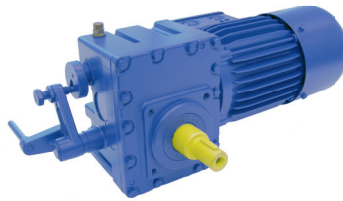
## Worm-Geared Motor Series BS



Economical, right-angle, worm-g geared motors install easily in the tightest applications.

- Motor power from 0.03 kW to 5.5 kW
- 8 gearbox sizes for torques from 25 Nm to 1000 Nm
- Hollow shaft version already available from 25 Nm
- High loadable worm gearing for long lifetime
- Enclosure IP 65 as standard
- Service friendly built-on brake

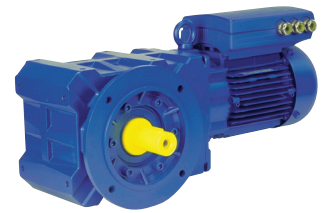
## Overhead Monorail Geared Motor Series BM



A completely new range of monorail drives for light and heavy load monorail applications.

- Torques from 30 Nm up to 680 Nm
- Radial force up to 6.500 N
- Flexible mounting on the running gear
- Enclosure IP 65 as standard
- Improved efficiency – lower energy consumption – ideal as travelling drives
- Reverse motion of the gearbox is possible

## Frequency Converter Geared Motor Series Eta-K



Eta-K solutions are combinations of geared motors and frequency converters. They provide compact drive solutions with infinite speed control.

- Saving space and costs
- No shielded motor cables required
- Mechatronic adaption of VLT drive and geared motor
- Motor power range 0.12 kW up to 7.5 kW
- Supply voltage 3 x 380 V - 480 V
- Compliance to all EMC standards
- Standard RS485-Interface, optional Profibus-Interface
- Zone 2 and 22 possible
- UL approved

## CAGE CLAMP®



The use of Bauer geared motors up to 30 kW with CAGE CLAMP® connection technology reduce costs both during installation and in service cases.

- Cost reduction during connection
- Simple handling
- Cable core diameters up to 25 mm<sup>2</sup> without wire-end sleeves
- Cost saving in material and tooling
- Vibration and shock resistant
- approved

## Explosion-proof BAUER Geared Motors



Geared motors suitable for use in explosive areas:

GAS Zones 1, 2  
DUST Zones 21, 22

DXD	Zone 1,	II 2G Ex d(e) II C T4,	0.12 ... 90 kW
DXE	Zone 1,	II 2G Ex e II T3,	0.12 ... 11 kW
DXN	Zone 2,	II 3G Ex nA II T3,	0.03 ... 30 kW
DXC	Zone 21,	II 2D Ex tD A21 IP65 T<160°C,	0.03 ... 30 kW
DXC	Zone 21,	II 2D Ex tD A21 IP65 T120°C,	0.03 ... 11 kW
DXS	Zone 22,	II 3D Ex tD II T<160°C,	0.03 ... 30 kW
DXD	Zone 1/21,	II 2G Ex d(e) II C T4/II 2D Ex tD A21 IP65 T120°C,	0.12 ... 90 kW
DXE	Zone 1/21,	II 2G Ex e II T3/II 2D Ex tD A21 IP65 T120°C,	0.12 ... 11 kW
DXS	Zone 2/22,	II 3G Ex nA II T3/II 3D Ex tD II T<160°C,	0.03 ... 30 kW

**Couplings**

**Ameridrives Couplings**

*Mill Spindles, Ameriflex, Ameridisc*

Erie, PA - USA  
1-814-480-5000

*Gear Couplings*

San Marcos, TX - USA  
1-800-458-0887

**Bibby Transmissions**

*Disc, Gear, Grid Couplings, Overload Clutches*

Dewsbury, England  
+44 (0) 1924 460801

Boksburg, South Africa  
+27 11 918 4270

**TB Wood's**

*Elastomeric Couplings*

Chambersburg, PA - USA  
1-888-829-6637 – Press #5

*For application assistance:  
1-888-829-6637 – Press #7*

*General Purpose  
Disc Couplings*

San Marcos, TX - USA  
1-888-449-9439

**Ameridrives Power Transmission**

*Universal Joints, Drive Shafts, Mill Gear Couplings*

Green Bay, WI - USA  
1-920-593-2444

**Huco Dynatork**

*Precision Couplings and Air Motors*

Hertford, England  
+44 (0) 1992 501900

Charlotte, NC - USA  
1-800-825-6544

**Linear Products**

**Warner Linear**

*Linear Actuators*

Belvidere, IL - USA  
1-800-825-6544

*For application assistance:  
1-800-825-9050*

St Barthelemy d'Anjou, France  
+33 (0) 2 41 21 24 24

**Electromagnetic Clutches and Brakes**

**Warner Electric**

*Electromagnetic Clutches and Brakes*

New Hartford, CT - USA  
1-800-825-6544

*For application assistance:  
1-800-825-9050*

St Barthelemy d'Anjou, France  
+33 (0) 2 41 21 24 24

*Precision Electric Coils and Electromagnetic Clutches and Brakes*

Columbia City, IN - USA  
1-260-244-6183

**Matrix International**

*Electromagnetic Clutches and Brakes, Pressure Operated Clutches and Brakes*

Brechin, Scotland  
+44 (0) 1356 602000

New Hartford, CT - USA  
1-800-825-6544

**Inertia Dynamics**

*Spring Set Brakes; Power On and Wrap Spring Clutch/Brakes*

New Hartford, CT - USA  
1-800-800-6445

**Overrunning Clutches**

**Formsprag Clutch**

*Overrunning Clutches and Holdbacks*

Warren, MI - USA  
1-800-348-0881 – Press #1

*For application assistance:  
1-800-348-0881 – Press #2*

**Marland Clutch**

*Roller Ramp and Sprag Type Overrunning Clutches and Backstops*

South Beloit, IL - USA  
1-800-216-3515

**Stieber Clutch**

*Overrunning Clutches and Holdbacks*

Heidelberg, Germany  
+49 (0) 6221 30 47 0

**Heavy Duty Clutches and Brakes**

**Wichita Clutch**

*Pneumatic Clutches and Brakes*

Wichita Falls, TX - USA  
1-800-964-3262

Bedford, England  
+44 (0) 1234 350311

**Twiflex Limited**

*Caliper Brakes and Thrusters*

Twickenham, England  
+44 (0) 20 8894 1161

**Industrial Clutch**

*Pneumatic and Oil Immersed Clutches and Brakes*

Waukesha, WI - USA  
1-262-547-3357

**Gearing**

**Boston Gear**

*Enclosed and Open Gearing, Electrical and Mechanical P.T. Components*

Charlotte, NC - USA  
1-800-825-6544

*For application assistance:  
1-800-816-5608*

**Bauer Gear Motor**

*Geared Motors*

Esslingen, Germany  
+49 (711) 3518-0

**Nuttall Gear and Delroyd Worm Gear**

*Worm Gear and Helical Speed Reducers*

Niagara Falls, NY - USA  
1-716-298-4100

**Belted Drives and Sheaves**

**TB Wood's**

*Belted Drives*

Chambersburg, PA - USA  
1-888-829-6637 – Press #5

*For application assistance:  
1-888-829-6637 – Press #7*

**Engineered Bearing Assemblies**

**Kilian Manufacturing**

*Engineered Bearing Assemblies*

Syracuse, NY - USA  
1-315-432-0700

**Bauer Gear Motor**

**Bauer Gear Motor GmbH**

Eberhard-Bauer-Strasse 36-60  
73734 Esslingen - Germany

+49 711 3518 0  
+49 711 3518 381 (Fax)

www.bauergears.com

**Bauer Gear Motor s.r.o**

Tovarenská 49  
953 01 Zlate Moravce - Slovakia

+65 6487 4464  
+65 6487 6674 (Fax)

www.bauergears.com

**Bauer Gear Motor Limited**

Nat Lane Business Park  
Winsford, Cheshire  
CW7 3BS - United Kingdom

+44 1606 868600  
+44 1606 868603 (Fax)

www.bauergears.com

**Bauer Gear Motor Finland Oy Ab**

Yrittäjäntie 3  
01800 Klaukkala - Finland

+358 207 189 700  
+358 207 189 701 (Fax)

www.bauergears.com

**Bauer Gear Motor LLC**

31 Schoolhouse Rd.  
Somerset NJ 08873-1212 - USA

+1 732 469 8770  
+1 732 469 8773 (Fax)

www.bauergears.com

Bauer assumes no liability or responsibility for misprints and errors in catalogues, brochures and other printed documentation. Bauer reserves the right to make changes to products without prior notice, including to products that have already been ordered, unless contractual technical specifications are affected by such changes. All trademarks in these publications are the sole and exclusive property of the relevant companies. Bauer and the Bauer logo are trademarks of Bauer Gear Motor GmbH. All rights reserved.



www.bauergears.com

Eberhard Bauer Straße 36-60  
73734 Esslingen - Germany  
Tel: +49 711 3518-0  
Fax: +49 711 3518-381